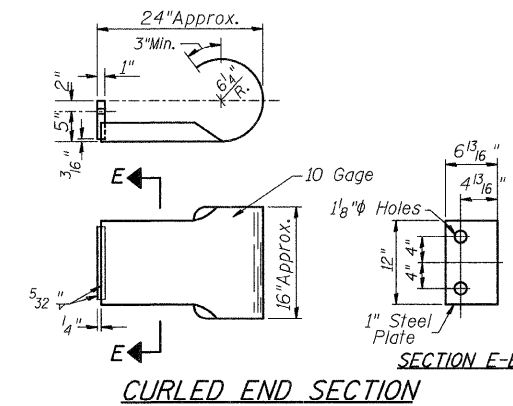
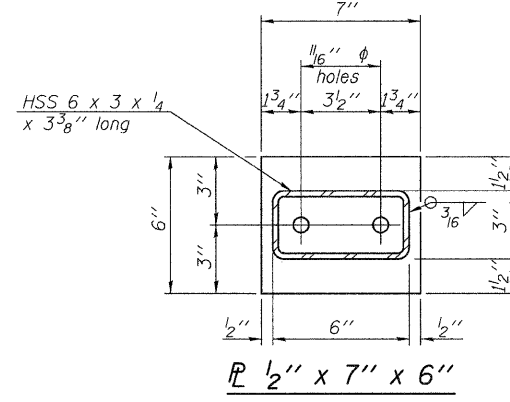
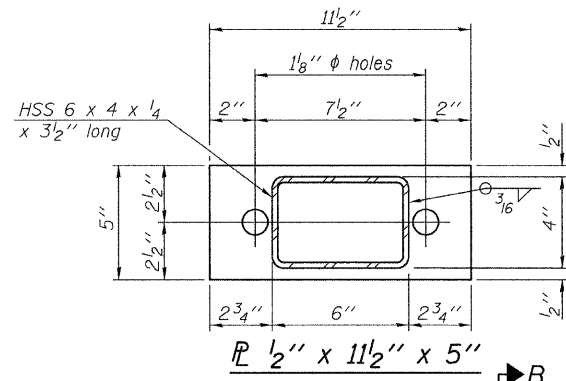
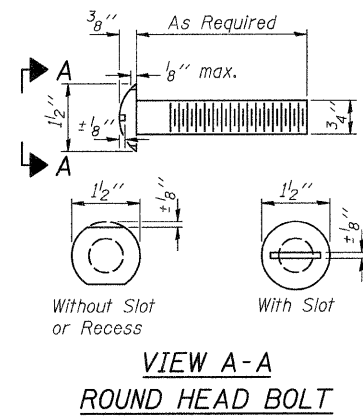


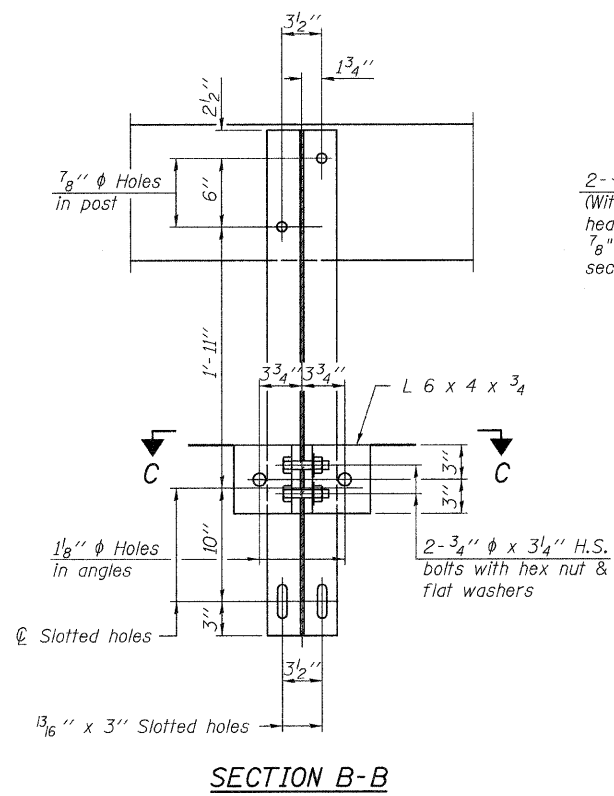
FOR RAIL POST SPACING SEE SH.#5 OF 12



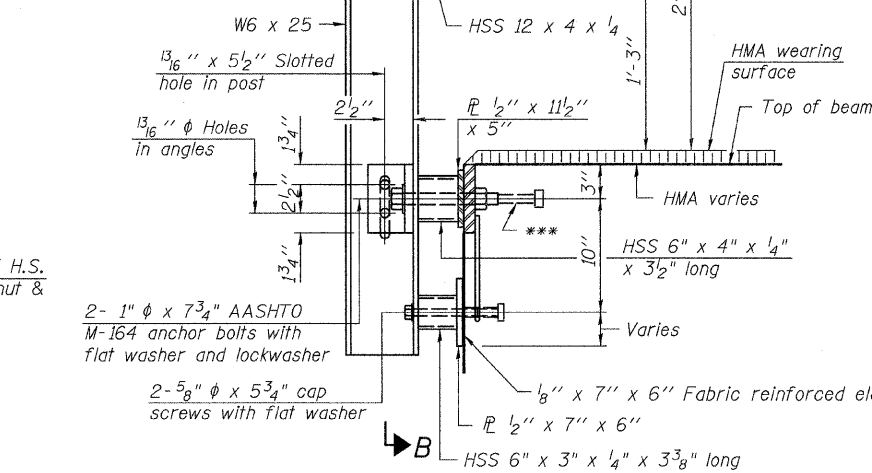
(2 Req'd) Cost Included with Steel Railing, Type S-1.  
Terminal Markers - Direct Applied shall be placed on end of each Curled End Section. (N.E. & S.W. Corners)

**NOTES**

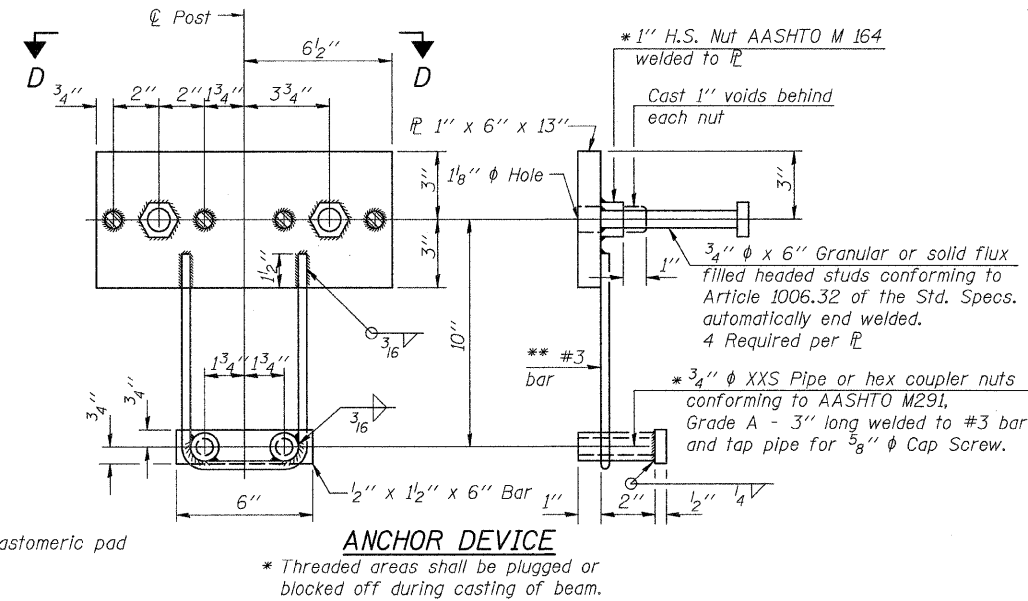
All field drilled holes shall be coated with an approved zinc rich paint before erection.  
For multi-span bridges, sufficient 1/4" x 6" x 1'-2" galvanized steel shims shall be provided to align rail between adjacent spans. Cost included with Steel Railing, Type S-1.  
All steel rail elements shall be galvanized according to Article 509.05 of the Standard Specifications.  
\*\*\* The studs of the anchor devices shall be placed below the top reinforcement bars and the outermost longitudinal reinforcement bar shall be placed directly above the studs of the rail post anchor device.



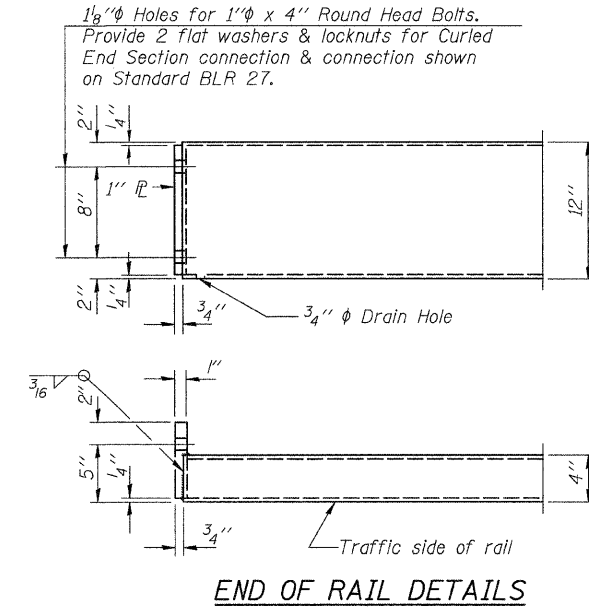
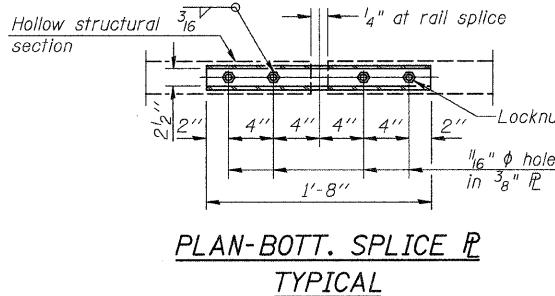
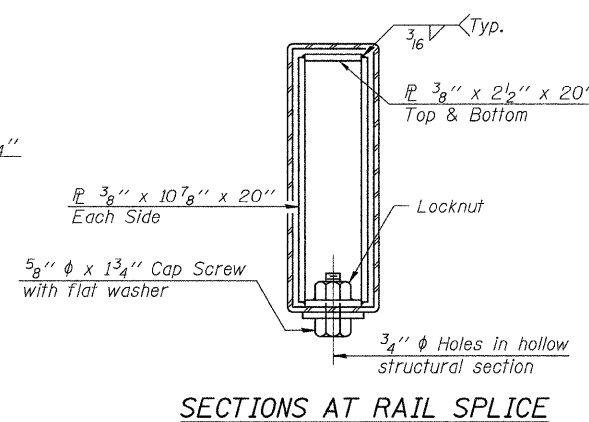
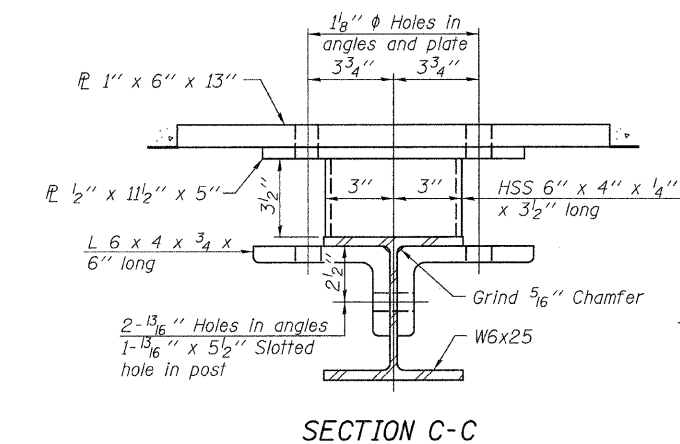
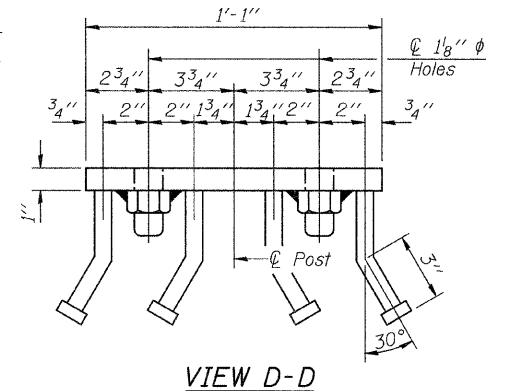
2- 3/4" φ x 6" Round Head Bolts (With slot or approved recess in head) with locknut & flat washer. 7/8" φ holes in hollow structural section may be drilled in the field.



\*\* Whenever the lower insert assemblies interfere with strand locations, the #3 bars shall be cut and adjusted in order to allow raising or lowering of the lower inserts. Maximum adjustment not to exceed 1/2".



\* 1" H.S. Nut AASHTO M 164 welded to PL  
Cast 1" voids behind each nut  
1" x 6" x 13"  
1/8" φ Hole  
3/4" φ x 6" Granular or solid flux filled headed studs conforming to Article 1006.32 of the Std. Specs. automatically end welded. 4 Required per PL  
\*\* #3 bar  
\* 3/4" φ XXS Pipe or hex coupler nuts conforming to AASHTO M291, Grade A - 3" long welded to #3 bar and tap pipe for 5/8" φ Cap Screw.



**BILL OF MATERIAL**

Item	Unit	Quantity
Steel Railing, Type S-1	FOOT	496

**STEEL RAILING, TYPE S-1**  
**TOWNSHIP ROAD 134A OVER**  
**MAUVAISE TERRE CREEK**  
**SECTION 06-06120-00-BR**  
**MORGAN COUNTY**  
**STATION 20+00.00**