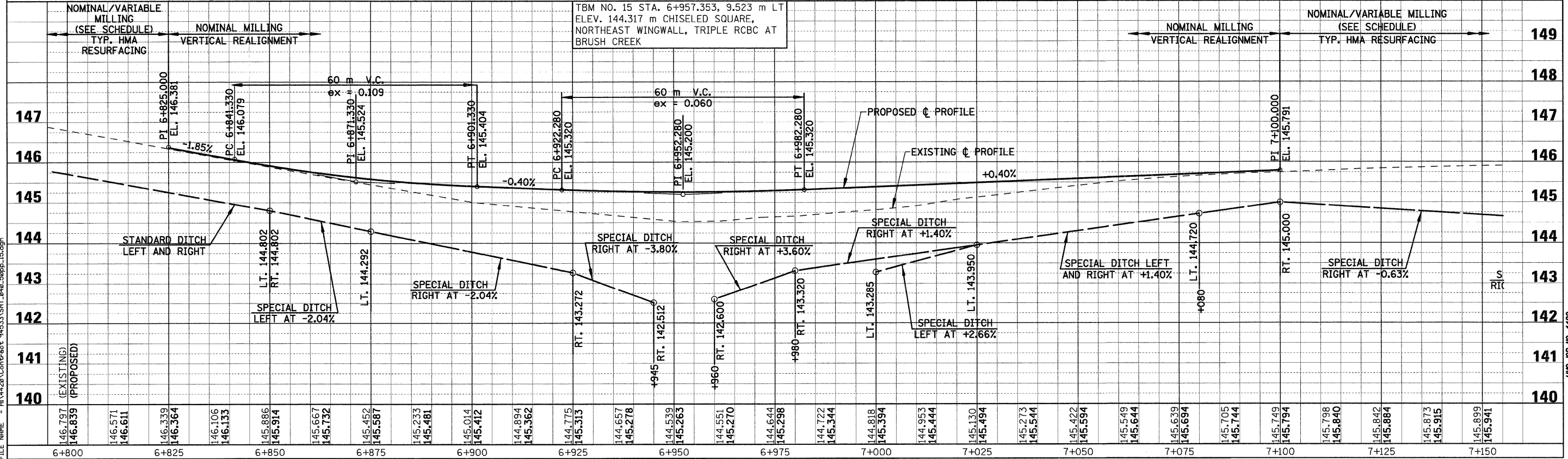
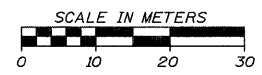
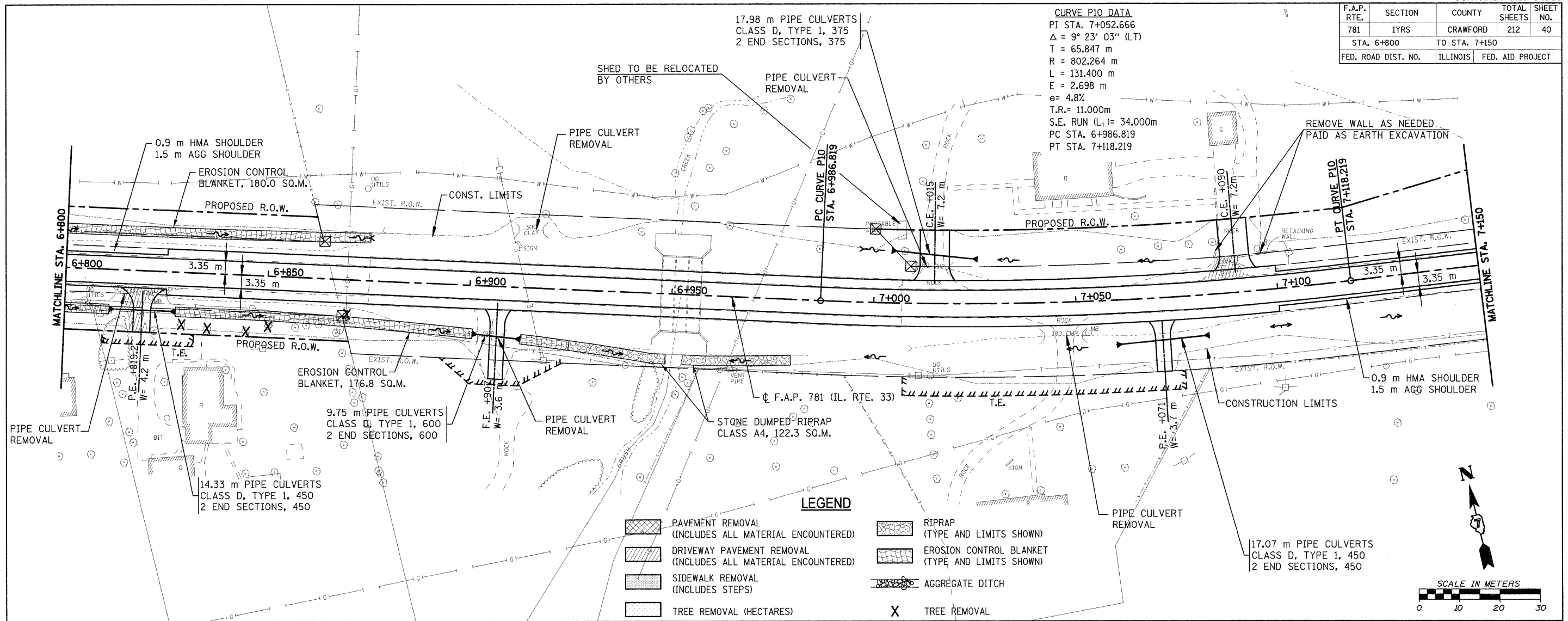


F.A.P. RTE.	SECTION	COUNTY	TOTAL SHEETS	SHEET NO.
781	LYRS	CRAWFORD	212	40
STA. 6+800		TO STA. 7+150		
FED. ROAD DIST. NO.		ILLINOIS		FED. AID PROJECT

CURVE P10 DATA
 PI STA. 7+052.666
 $\Delta = 9^\circ 23' 03''$ (LT)
 T = 65.847 m
 R = 802.264 m
 L = 131.400 m
 E = 2.698 m
 e = 4.8%
 T.R. = 11.000m
 S.E. RUN (L) = 34.000m
 PC STA. 6+986.819
 PT STA. 7+118.219



PLOT DATE = 12/22/2008
 FILE NAME = P:\4428\Contract\94533\Sheet_40.dwg