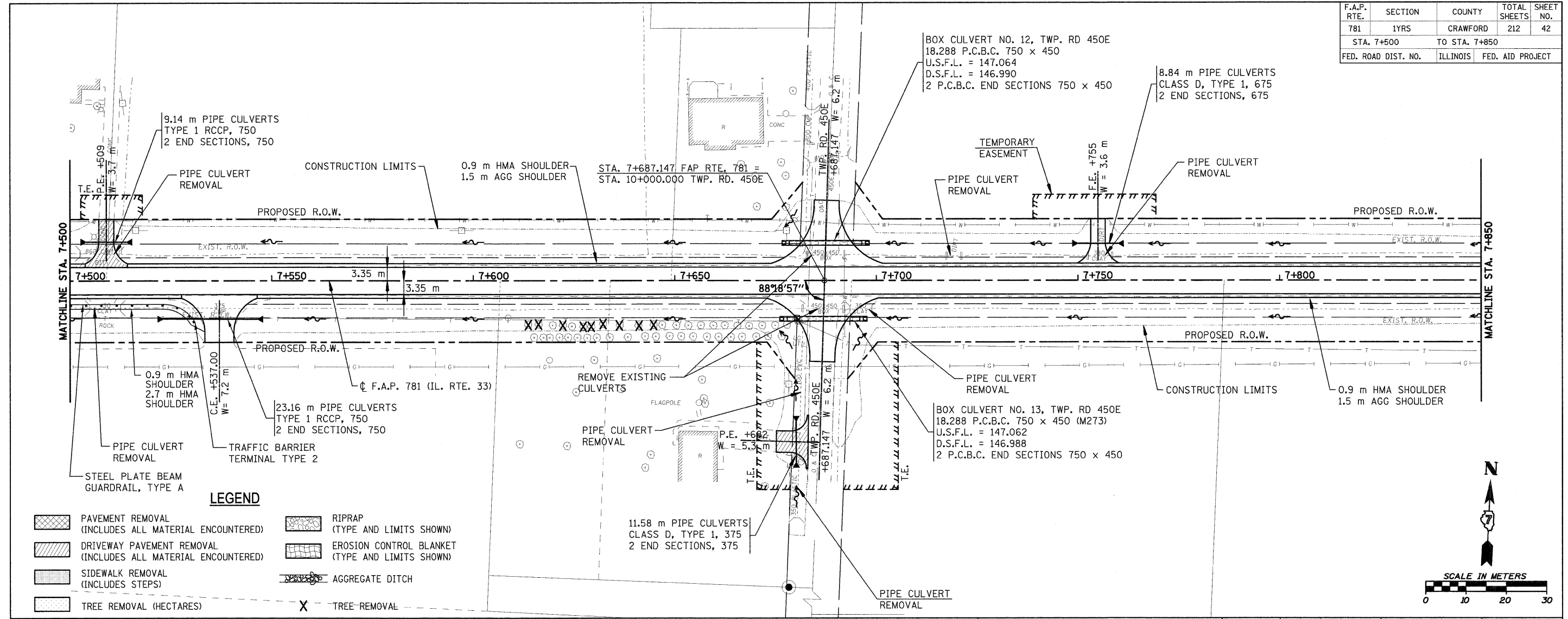
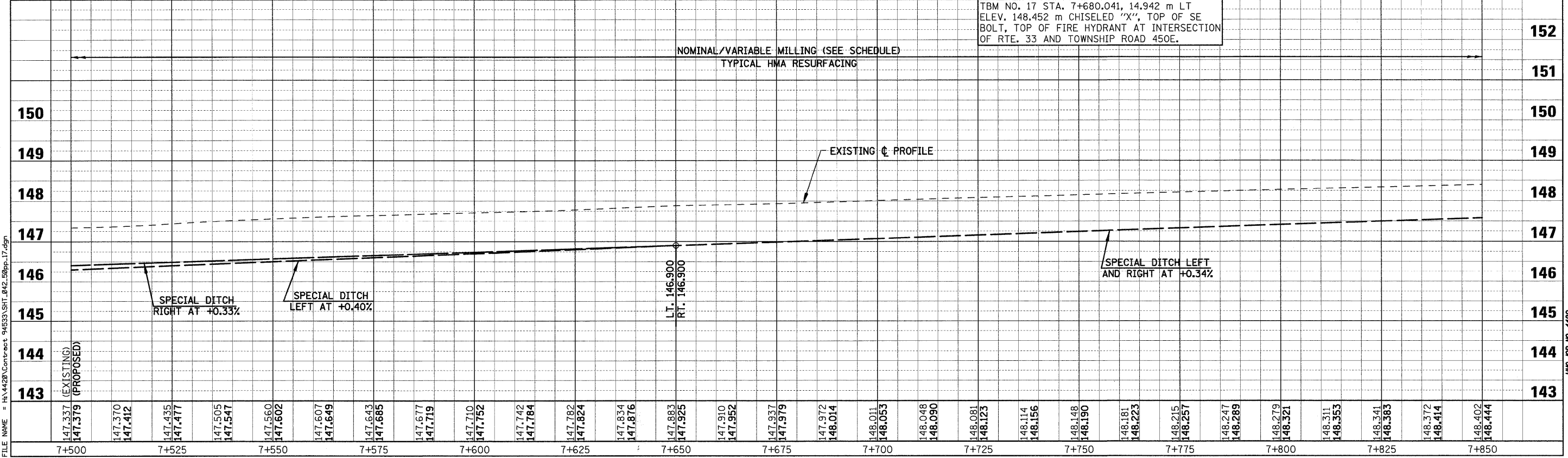
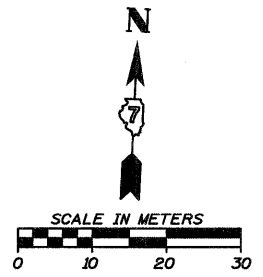


F.A.P. RTE.	SECTION	COUNTY	TOTAL SHEETS	SHEET NO.
781	1YRS	CRAWFORD	212	42
STA. 7+500		TO STA. 7+850		
FED. ROAD DIST. NO.	ILLINOIS	FED. AID PROJECT		



**LEGEND**

	PAVEMENT REMOVAL (INCLUDES ALL MATERIAL ENCOUNTERED)		RIPRAP (TYPE AND LIMITS SHOWN)
	DRIVEWAY PAVEMENT REMOVAL (INCLUDES ALL MATERIAL ENCOUNTERED)		EROSION CONTROL BLANKET (TYPE AND LIMITS SHOWN)
	SIDEWALK REMOVAL (INCLUDES STEPS)		AGGREGATE DITCH
	TREE REMOVAL (HECTARES)		TREE-REMOVAL



TBM NO. 17 STA. 7+680.041, 14.942 m LT  
 ELEV. 148.452 m CHISELED "X", TOP OF SE BOLT, TOP OF FIRE HYDRANT AT INTERSECTION OF RTE. 33 AND TOWNSHIP ROAD 450E.

NOMINAL/VARIABLE MILLING (SEE SCHEDULE)  
 TYPICAL HMA RESURFACING

SPECIAL DITCH RIGHT AT +0.33%  
 SPECIAL DITCH LEFT AT +0.40%

SPECIAL DITCH LEFT AND RIGHT AT +0.34%

L.T. 146.900  
 R.T. 146.900

PLOT DATE = 12/22/2008  
 FILE NAME = P:\V\20\Contract\94533\SHT\_042\_50pp.17.dgn