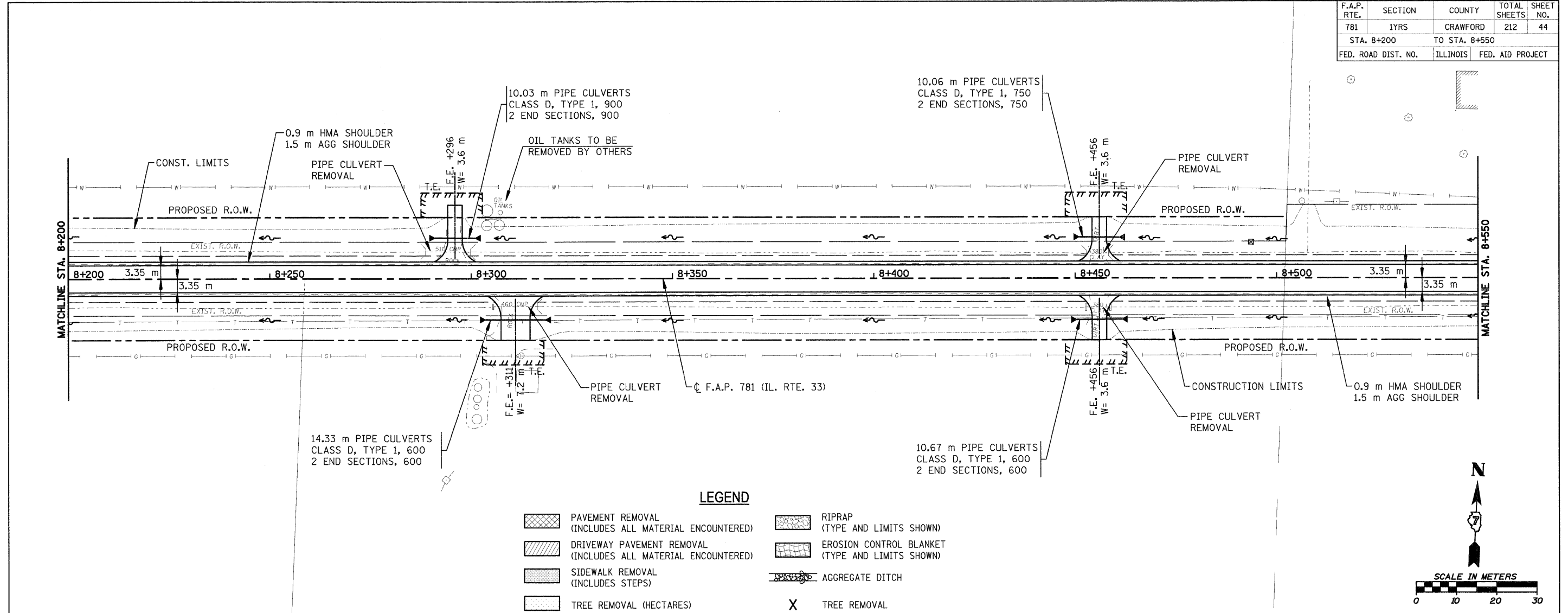
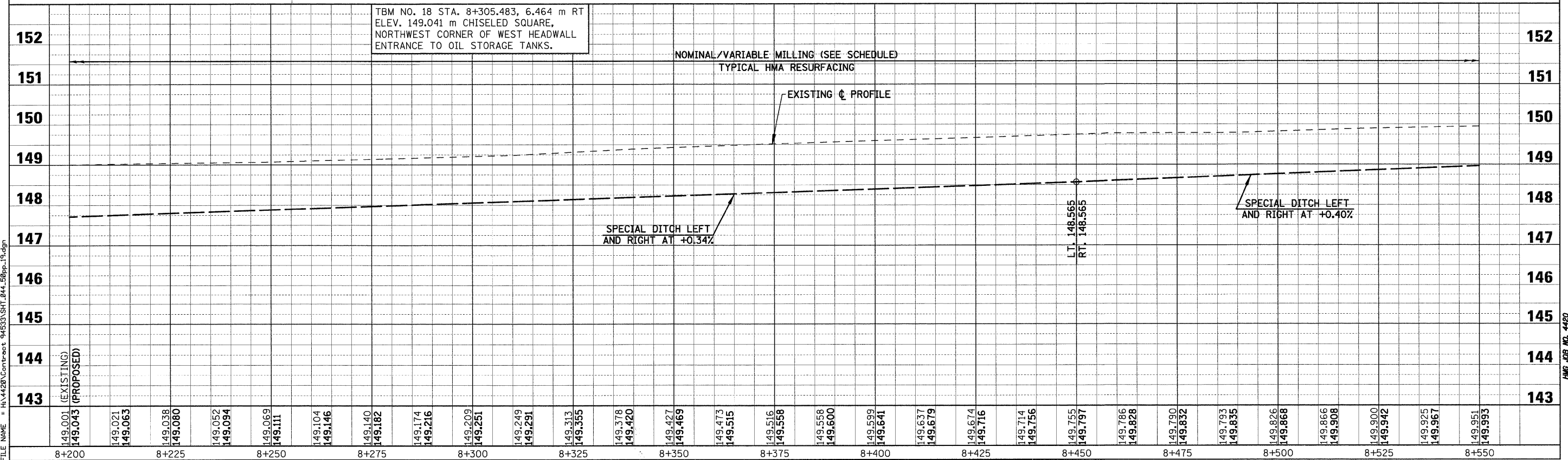


| F.A.P. RTE.         | SECTION | COUNTY        | TOTAL SHEETS     | SHEET NO. |
|---------------------|---------|---------------|------------------|-----------|
| 781                 | 1YRS    | CRAWFORD      | 212              | 44        |
| STA. 8+200          |         | TO STA. 8+550 |                  |           |
| FED. ROAD DIST. NO. |         | ILLINOIS      | FED. AID PROJECT |           |



**LEGEND**

- PAVEMENT REMOVAL (INCLUDES ALL MATERIAL ENCOUNTERED)
- DRIVEWAY PAVEMENT REMOVAL (INCLUDES ALL MATERIAL ENCOUNTERED)
- SIDEWALK REMOVAL (INCLUDES STEPS)
- TREE REMOVAL (HECTARES)
- RIPRAP (TYPE AND LIMITS SHOWN)
- EROSION CONTROL BLANKET (TYPE AND LIMITS SHOWN)
- AGGREGATE DITCH
- TREE REMOVAL



PLOT DATE = 12/22/2008  
 FILE NAME = P:\V\20\Contract 94533\SHT\_044\_50pp\_19.dgn

HMG JOB NO. 4420