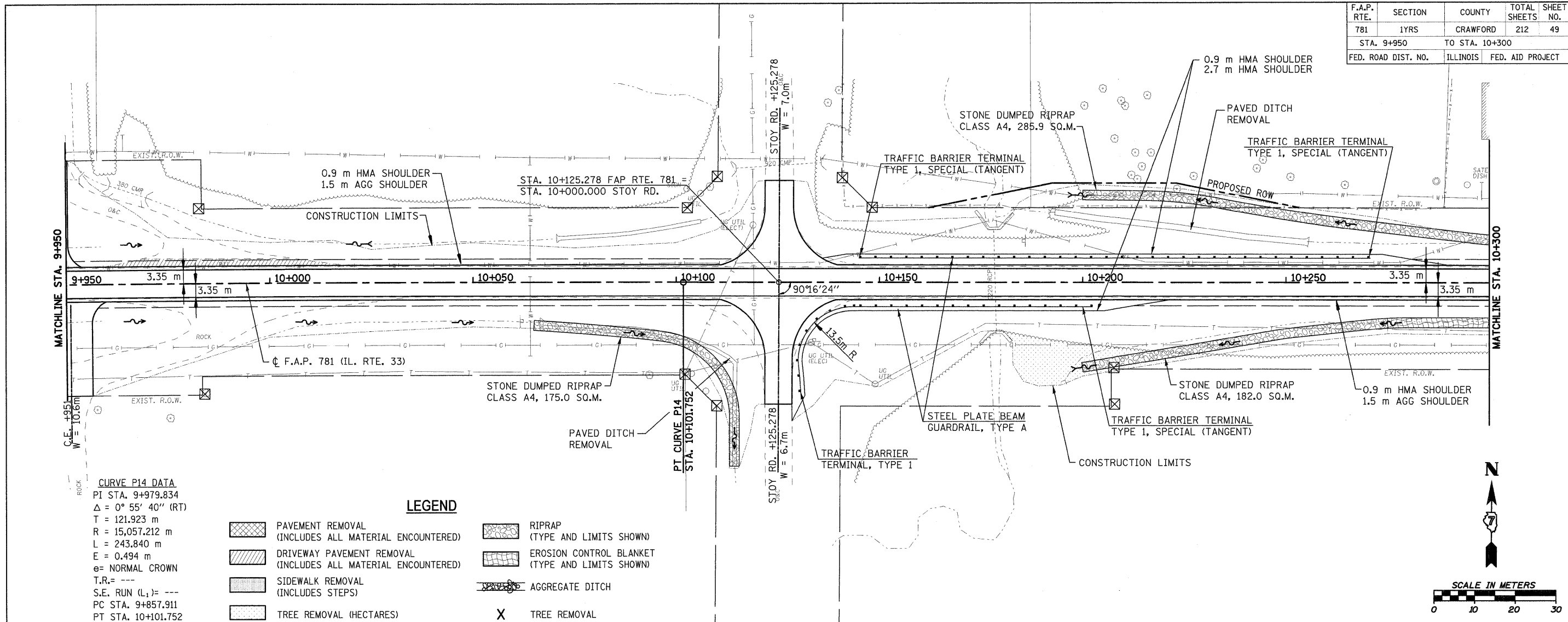


F.A.P. RTE.	SECTION	COUNTY	TOTAL SHEETS	SHEET NO.
781	LYRS	CRAWFORD	212	49
STA. 9+950		TO STA. 10+300		
FED. ROAD DIST. NO.	ILLINOIS	FED. AID PROJECT		



CURVE P14 DATA
 PI STA. 9+979.834
 $\Delta = 0^\circ 55' 40''$ (RT)
 T = 121.923 m
 R = 15,057.212 m
 L = 243.840 m
 E = 0.494 m
 e = NORMAL CROWN
 T.R. = ---
 S.E. RUN (L₁) = ---
 PC STA. 9+857.911
 PT STA. 10+101.752

LEGEND

- PAVEMENT REMOVAL (INCLUDES ALL MATERIAL ENCOUNTERED)
- DRIVEWAY PAVEMENT REMOVAL (INCLUDES ALL MATERIAL ENCOUNTERED)
- SIDEWALK REMOVAL (INCLUDES STEPS)
- TREE REMOVAL (HECTARES)
- RIPRAP (TYPE AND LIMITS SHOWN)
- EROSION CONTROL BLANKET (TYPE AND LIMITS SHOWN)
- AGGREGATE DITCH
- TREE REMOVAL

