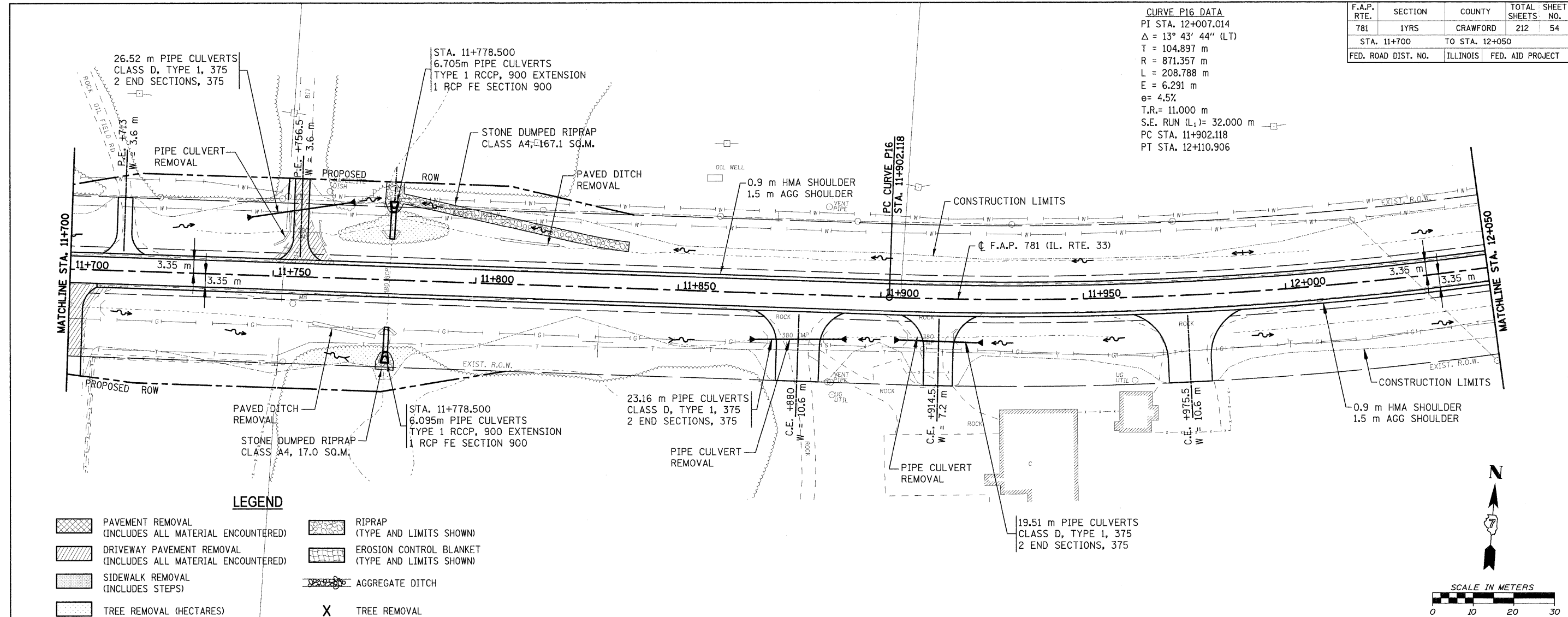


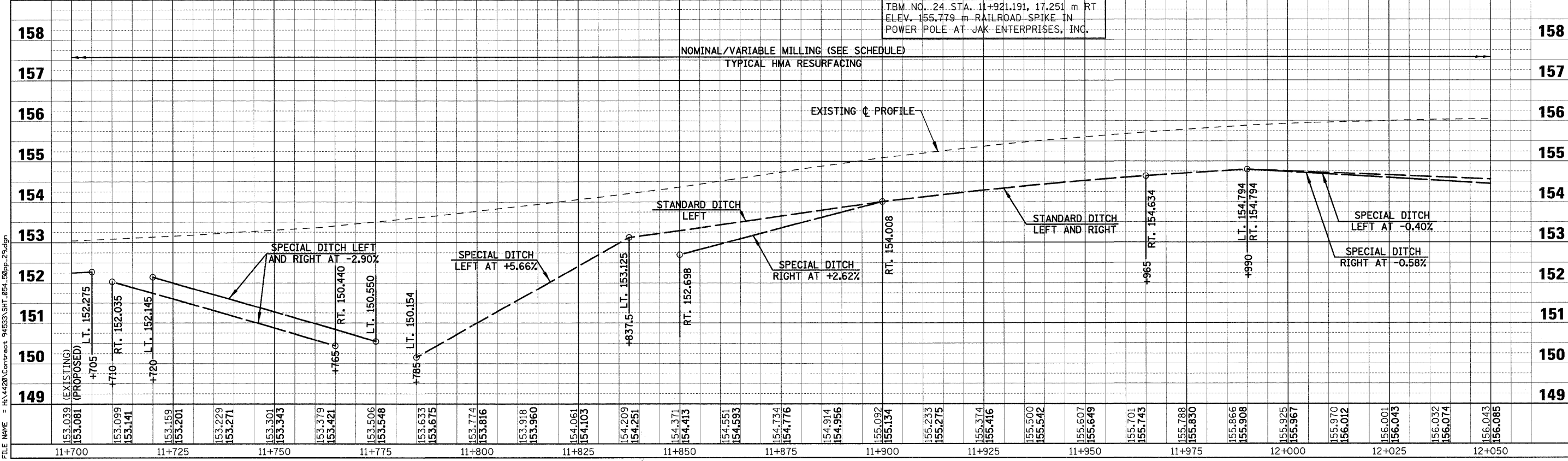
F.A.P. RTE.	SECTION	COUNTY	TOTAL SHEETS	SHEET NO.
781	1YRS	CRAWFORD	212	54
STA. 11+700		TO STA. 12+050		
FED. ROAD DIST. NO.		ILLINOIS	FED. AID PROJECT	

CURVE P16 DATA
 PI STA. 12+007.014
 $\Delta = 13^\circ 43' 44''$ (LT)
 $T = 104.897$ m
 $R = 871.357$ m
 $L = 208.788$ m
 $E = 6.291$ m
 $e = 4.5\%$
 $T.R. = 11.000$ m
 $S.E. RUN (L_1) = 32.000$ m
 PC STA. 11+902.118
 PT STA. 12+110.906



LEGEND

- PAVEMENT REMOVAL (INCLUDES ALL MATERIAL ENCOUNTERED)
- DRIVEWAY PAVEMENT REMOVAL (INCLUDES ALL MATERIAL ENCOUNTERED)
- SIDEWALK REMOVAL (INCLUDES STEPS)
- TREE REMOVAL (HECTARES)
- RIPRAP (TYPE AND LIMITS SHOWN)
- EROSION CONTROL BLANKET (TYPE AND LIMITS SHOWN)
- AGGREGATE DITCH
- TREE REMOVAL



PLOT DATE = 12/22/2008
 FILE NAME = P:\V\20\Contract\94533\SH1_054_50pp_2.dwg