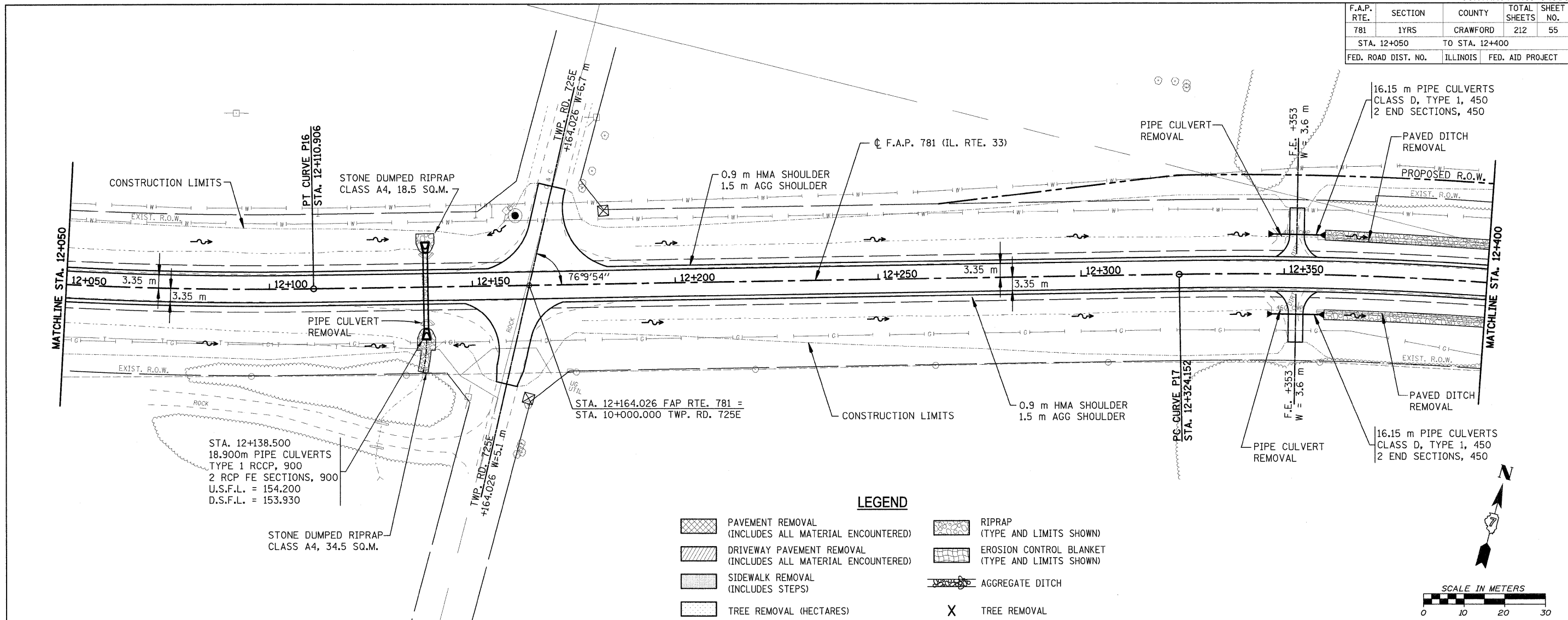
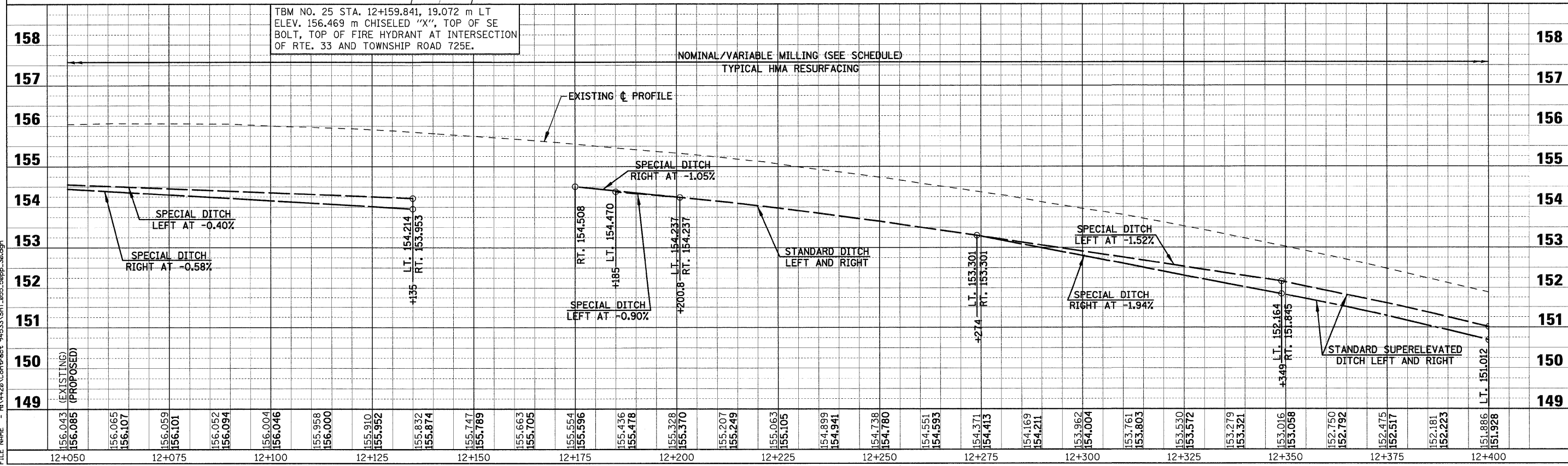
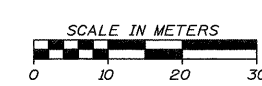


F.A.P. RTE.	SECTION	COUNTY	TOTAL SHEETS	SHEET NO.
781	1YRS	CRAWFORD	212	55
STA. 12+050		TO STA. 12+400		
FED. ROAD DIST. NO.		ILLINOIS	FED. AID PROJECT	



LEGEND

	PAVEMENT REMOVAL (INCLUDES ALL MATERIAL ENCOUNTERED)		RIPRAP (TYPE AND LIMITS SHOWN)
	DRIVEWAY PAVEMENT REMOVAL (INCLUDES ALL MATERIAL ENCOUNTERED)		EROSION CONTROL BLANKET (TYPE AND LIMITS SHOWN)
	SIDEWALK REMOVAL (INCLUDES STEPS)		AGGREGATE DITCH
	TREE REMOVAL (HECTARES)		TREE REMOVAL



TBM NO. 25 STA. 12+159.841, 19.072 m LT ELEV. 156.469 m CHISELED "X", TOP OF SE BOLT, TOP OF FIRE HYDRANT AT INTERSECTION OF RTE. 33 AND TOWNSHIP ROAD 725E.

PLOT DATE = 12/22/2006
FILE NAME = P:\V\20\Contract\94533\SH1_065_50pp_30.dgn