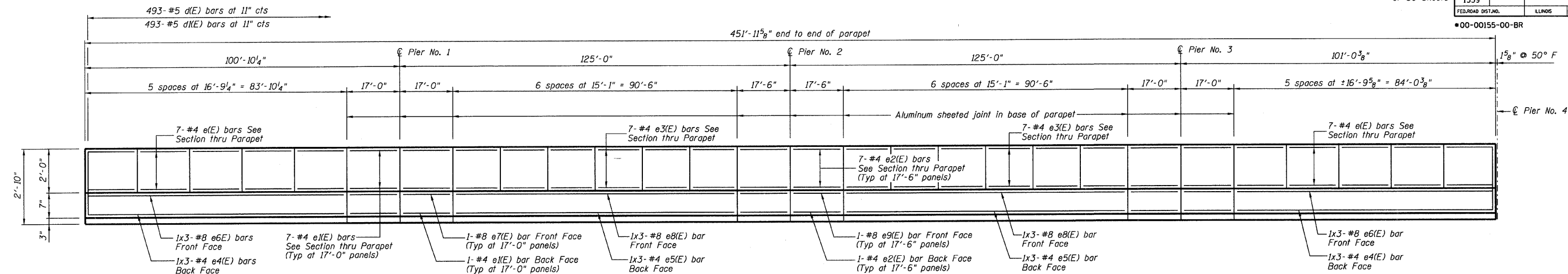
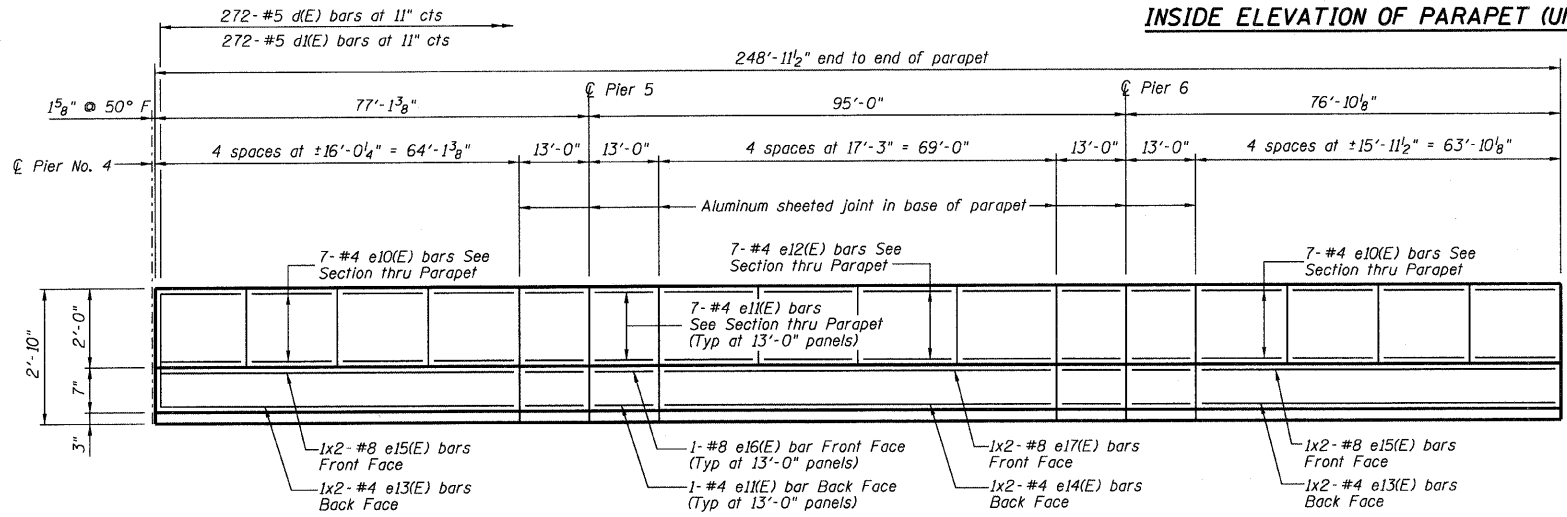


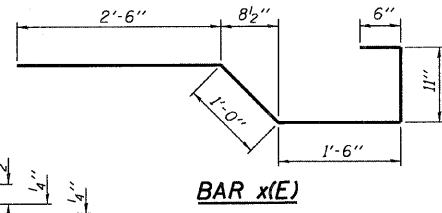
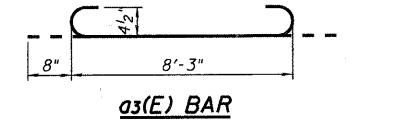
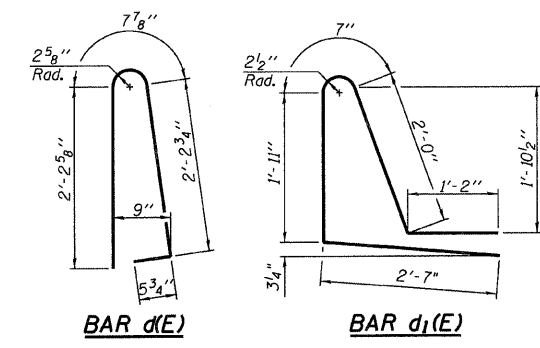
ROUTE NO.	SECTION	COUNTY	TOTAL SHEETS	SHEET NO.
FAS 1539		MACON	57	13
FED. ROAD DIST. NO.		ILLINOIS	PROJECT	
*00-00155-00-BR				



INSIDE ELEVATION OF PARAPET (UNIT 1)



INSIDE ELEVATION OF PARAPET (UNIT 2)

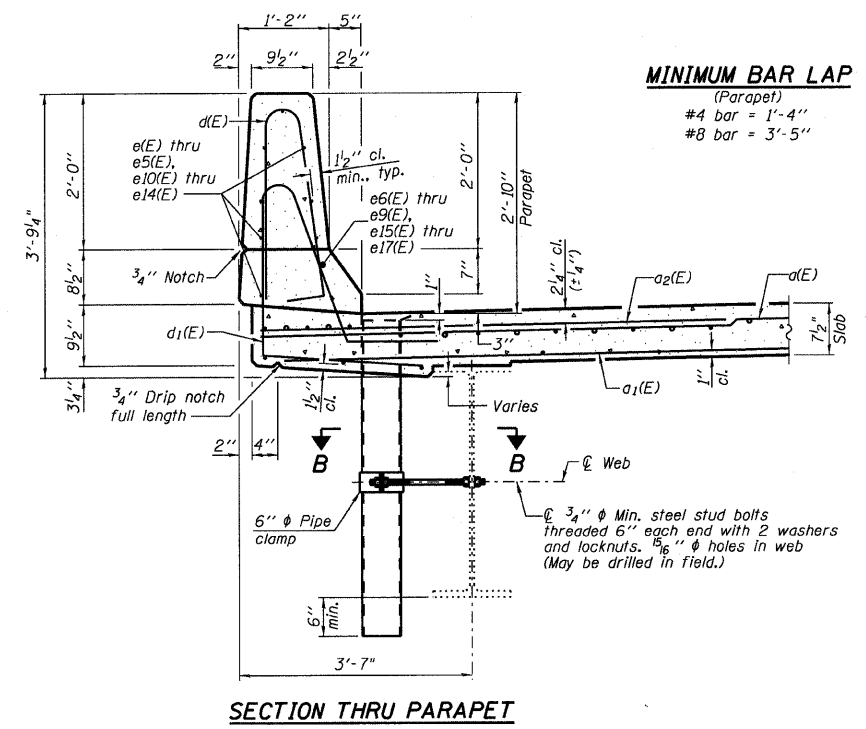


SUPERSTRUCTURE
BILL OF MATERIAL (UNIT 1)

Bar	No.	Size	Length	Shape
a(E)	986	#5	38'-6"	
a1(E)	678	#5	36'-9"	
a2(E)	986	#6	6'-0"	
a3(E)	12	#6	9'-7"	
a4(E)	5	#6	34'-0"	
b(E)	672	#5	29'-9"	
b1(E)	578	#6	28'-2"	
b2(E)	234	#6	21'-4"	
b3(E)	117	#6	22'-0"	
d(E)	986	#5	5'-7"	
d1(E)	986	#5	8'-3"	
e(E)	140	#4	16'-6"	
e1(E)	64	#4	16'-9"	
e2(E)	32	#4	17'-3"	
e3(E)	168	#4	14'-10"	
e4(E)	12	#4	28'-9"	
e5(E)	12	#4	31'-0"	
e6(E)	12	#8	30'-2"	
e7(E)	8	#8	16'-9"	
e8(E)	12	#8	32'-5"	
e9(E)	4	#8	17'-3"	
x(E)	28	#5	6'-5"	
Reinforcement Bars, Epoxy Coated		Pound	153,300	
Concrete Superstructure		Cu. Yds.	537.7	
Bridge Deck Grooving		Sq. Yd.	1706	
Protective Coat		Sq. Yd.	2198	

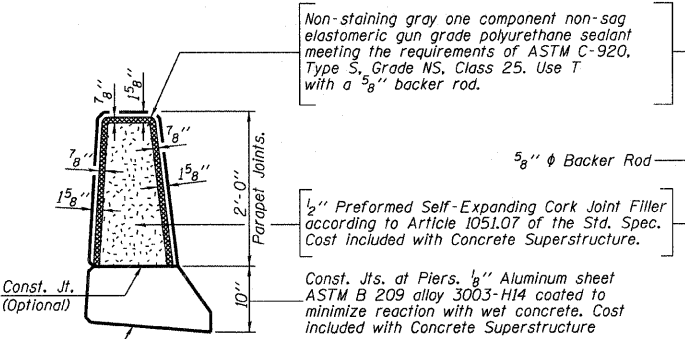
SUPERSTRUCTURE
BILL OF MATERIAL (UNIT 2)

Bar	No.	Size	Length	Shape
a(E)	543	#5	38'-6"	
a1(E)	373	#5	36'-9"	
a2(E)	544	#6	6'-0"	
a3(E)	12	#6	9'-7"	
a4(E)	5	#6	34'-0"	
b4(E)	378	#5	29'-1"	
b5(E)	340	#5	26'-4"	
b6(E)	78	#6	47'-0"	
d(E)	544	#5	5'-7"	
d1(E)	544	#5	8'-3"	
e10(E)	112	#4	15'-8"	
e11(E)	64	#4	12'-9"	
e12(E)	56	#4	17'-0"	
e13(E)	8	#4	32'-8"	
e14(E)	4	#4	35'-1"	
e15(E)	8	#8	33'-8"	
e16(E)	8	#8	12'-9"	
e17(E)	4	#8	36'-1"	
x(E)	28	#5	6'-5"	
Reinforcement Bars, Epoxy Coated		Pound	79,780	
Concrete Superstructure		Cu. Yds.	298.5	
Bridge Deck Grooving		Sq. Yd.	939	
Protective Coat		Sq. Yd.	1212	

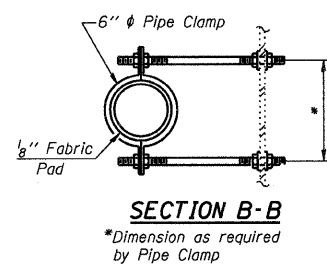


SECTION THRU PARAPET

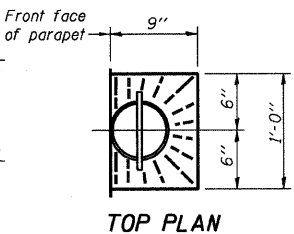
MINIMUM BAR LAP
(Parapet)
#4 bar = 1'-4"
#8 bar = 3'-5"



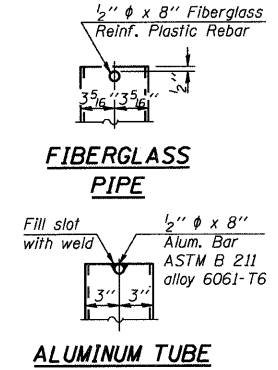
PARAPET JOINT DETAILS



SECTION B-B
*Dimension as required by Pipe Clamp



TOP PLAN



FIBERGLASS PIPE

ALUMINUM TUBE
(Showing Aluminum Tube)

Notes:
Drains shall be located clear of all diaphragms or cross frames.
The exterior surfaces of the floor drains shall be painted with the finish coat as specified in the special provisions for Cleaning and Painting New Metal Structures. The exterior surfaces of the drains shall be cleaned according to Society of Protective Coatings Spec. SSPC-SP1 prior to painting.
Fiberglass pipe shall conform to ASTM D 2996, with short-time rupture strength hoop tensile stress of 30,000 p.s.i. minimum.
Bars indicated thus 1 x 3 - #8 etc. indicates 1 line of bars with 3 lengths per line.
Galvanize clamping device according to AASHTO M232.

WYCKLES ROAD OVER THE SANGAMON RIVER

SUPERSTRUCTURE DETAILS

REVISIONS	FAS 1539	SECTION 00-00155-00-BR	DRAWN BY DATE
1		SN 058-3030	R KING 9/08
2	STA 30+50.00	MACON COUNTY	CHECKED BY DATE
3			JMB 9/08
4			BOOK NUMBER
5			PROJECT NO.
6			4698
7			SHEET NO.
8			
9			
10			

HOMER L. CHASTAIN & ASSOCIATES, LLP
CONSULTING ENGINEERS
184-00197

DECATUR CHICAGO
(317) 422-8544 (773) 714-0050

ROCKFORD
(815) 489-0050