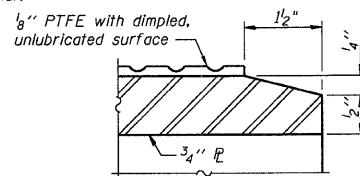
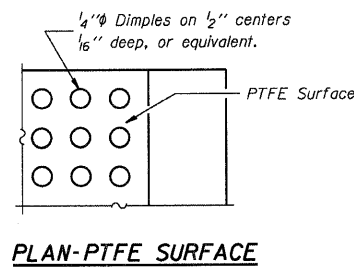
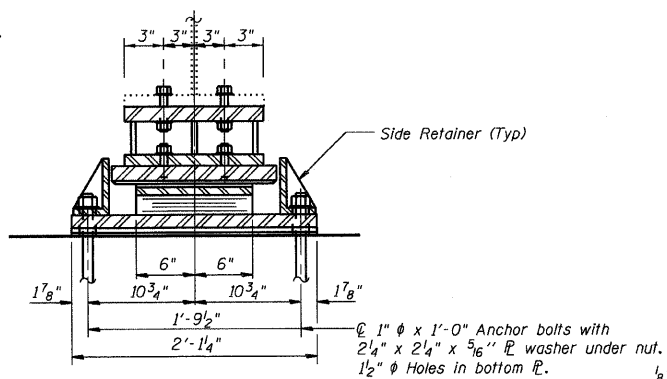
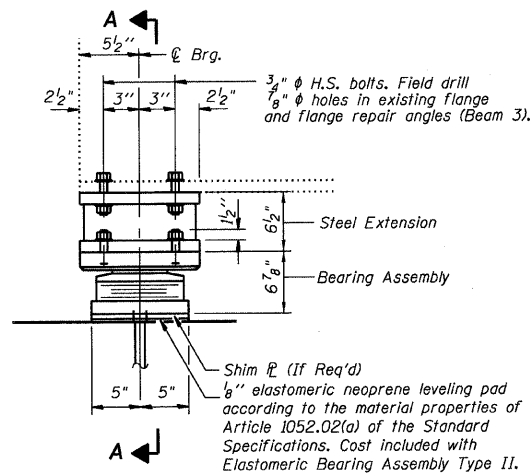


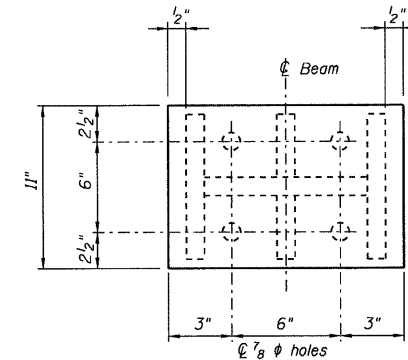
ROUTE NO.	SECTION	COUNTY	TOTAL SHEETS	SHEET NO.
FAS 1539	•	MACON	57	24
FEDERAL DIST. NO.		ILLINOIS	PROJECT	

• 00-00155-00-BR

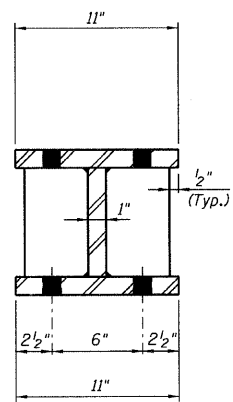
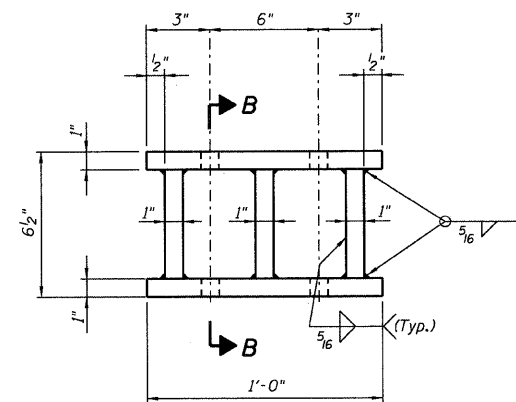


Note: The 1/8" TFE sheet shall be bonded directly to the top steel plate with a two-component, medium viscosity epoxy resin, conforming to the requirements of the Federal Specification MMM-A-134, Type I. The bond agent shall be applied on the full area of the contact surfaces.

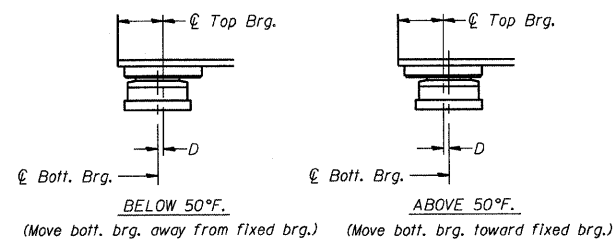
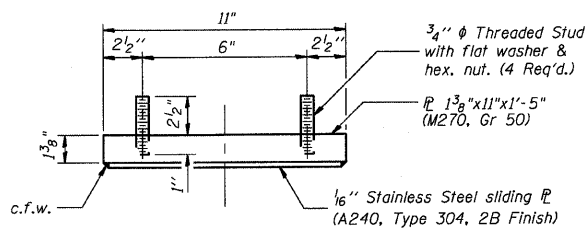
Bonding of 1/8" TFE sheet during vulcanizing process will be permitted provided the process and method of adjusting assembly height is approved by the Engineer.



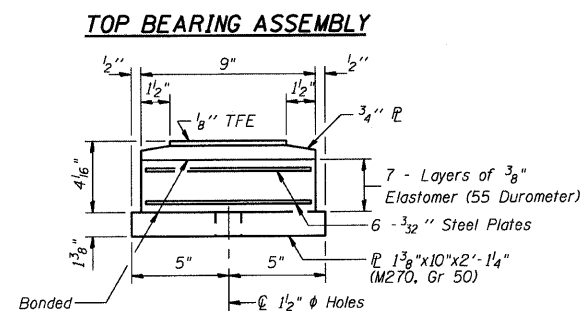
Note: Prior to ordering any material, the Contractor shall verify in the field all bearing height and shim thickness dimensions.



**FABRICATED STEEL EXTENSION**  
(5 required)

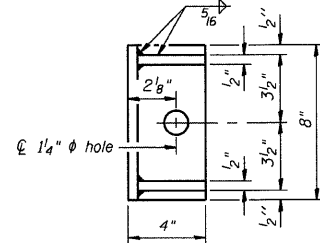
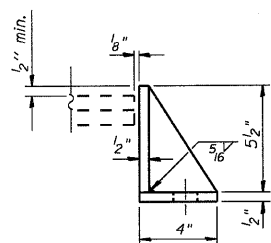


**SETTING ANCHOR BOLTS AT EXP. BRG.**  
D = 1/8" per each 100' of expansion for every 15° temp. change from the normal temp. of 50°F.



**TYPE II ELASTOMERIC EXPANSION BEARING**

**BOTTOM BEARING ASSEMBLY**



Equivalent rolled angle with stiffeners will be allowed in lieu of welded plates.

**Notes:**

Anchor bolts shall be ASTM F1554 all-thread (or an Engineer-approved alternate material) of the grade(s) and diameter(s) specified. ASTM A307 Grade C anchor bolts may be used in lieu of ASTM F1554 Grade 36 (Fy=36ksi). The corresponding specified grade of AASHTO M314 anchor bolts may be used in lieu of ASTM F1554.

Anchor bolts at fixed bearings may be either cast in place or installed in holes drilled after the supported member is in place.

Anchor bolts for Type II bearings shall be placed in holes drilled in the concrete through holes in the bottom bearing plate after members are in place. Side retainers shall be placed after bolts are installed.

Drilled and set anchor bolts shall be installed according to Article 521.06 of the Standard Specifications.

The 1/8" PTFE sheet shall be bonded directly to the top steel plate with a two-component, medium viscosity epoxy resin, conforming to the requirements of the Federal Specification MMM-A-134, Type I. The bond agent shall be applied on the full area of the contact surfaces.

Bonding of 1/8" PTFE sheet during vulcanizing process will be permitted provided the process and method of adjusting assembly height is approved by the Engineer.

Side retainers, anchor bolts and other steel members required for the bearing assembly shall be included in the cost of Elastomeric Bearing Assembly, Type II.

**BILL OF MATERIAL**

Item	Unit	Total
Elastomeric Bearing Assembly Type II	Each	5
Jack and Remove Existing Bearings	Each	5

PIER NO. 4 - UNIT 2  
WYCKLES ROAD OVER THE SANGAMON RIVER

**ELASTOMERIC BEARING DETAILS**

REVISIONS	FAS 1539	SECTION 00-00155-00-BR	DRAWN BY DATE R KING 9/08
No. DATE INITIALS	SN 058-3030	MACON COUNTY	CHECKED BY DATE JMB 9/08
1	STA 30+50.00		BOOK NUMBER <b>389</b>
2			PROJECT No. <b>4698</b>
3			SHEET No.
4			
5			
6			
7			
8			
9			
10			

HOMER L. CHASTAIN & ASSOCIATES, LLP  
CONSULTING ENGINEERS  
184-001377

DECATUR CHICAGO  
(317) 422-8544 (773) 714-0050

ROCKFORD  
(815) 489-0050