

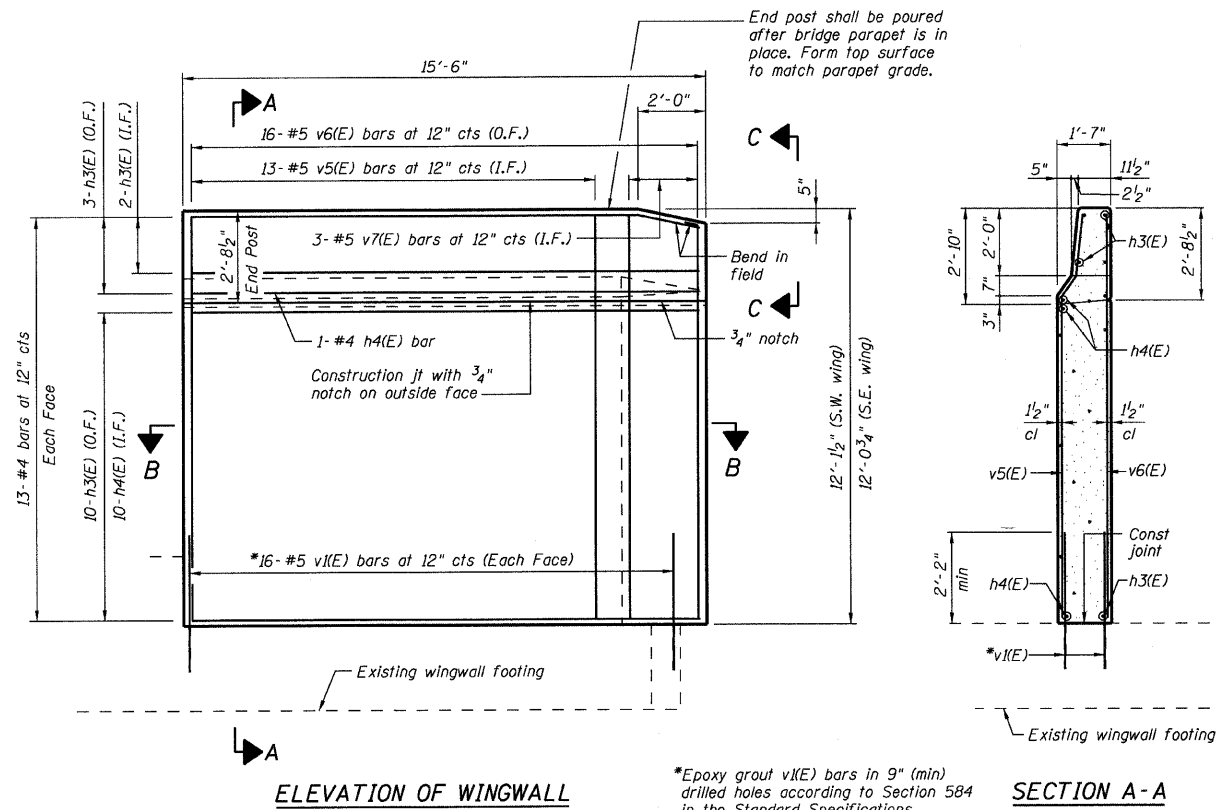
ROUTE NO.	SECTION	COUNTY	TOTAL SHEETS	SHEET NO.
FAS 1539		MACON	57	29
FED. ROAD DIST. NO.	ILLINOIS	PROJECT		

00-00155-00-BR

**BILL OF MATERIAL  
SOUTH ABUTMENT**

Bar	No	Size	Length	Shape
h(E)	6	#6	38'-0"	—
h1(E)	20	#5	5'-3"	L
h2(E)	20	#5	5'-3"	L
h3(E)	30	#4	15'-3"	—
h4(E)	22	#4	15'-3"	—
u(E)	38	#4	3'-2"	□
v(E)	38	#5	2'-3"	—
v1(E)	70	#5	3'-3"	—
v2(E)	2	#5	7'-8"	—
v3(E)	4	#5	9'-1"	—
v4(E)	2	#5	3'-1"	—
v5(E)	26	#5	11'-8"	—
v6(E)	32	#5	11'-11"	—
v7(E)	6	#5	11'-11"	—
Concrete Structures	Cu Yd	17.8		
Reinforcement Bars Epoxy Coated	Pound	2350		
Concrete Removal	Cu Yd	15.2		

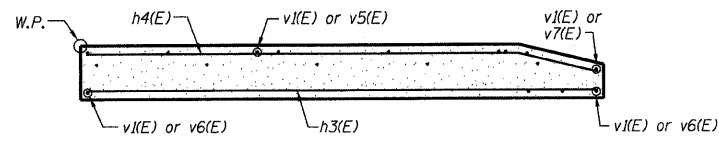
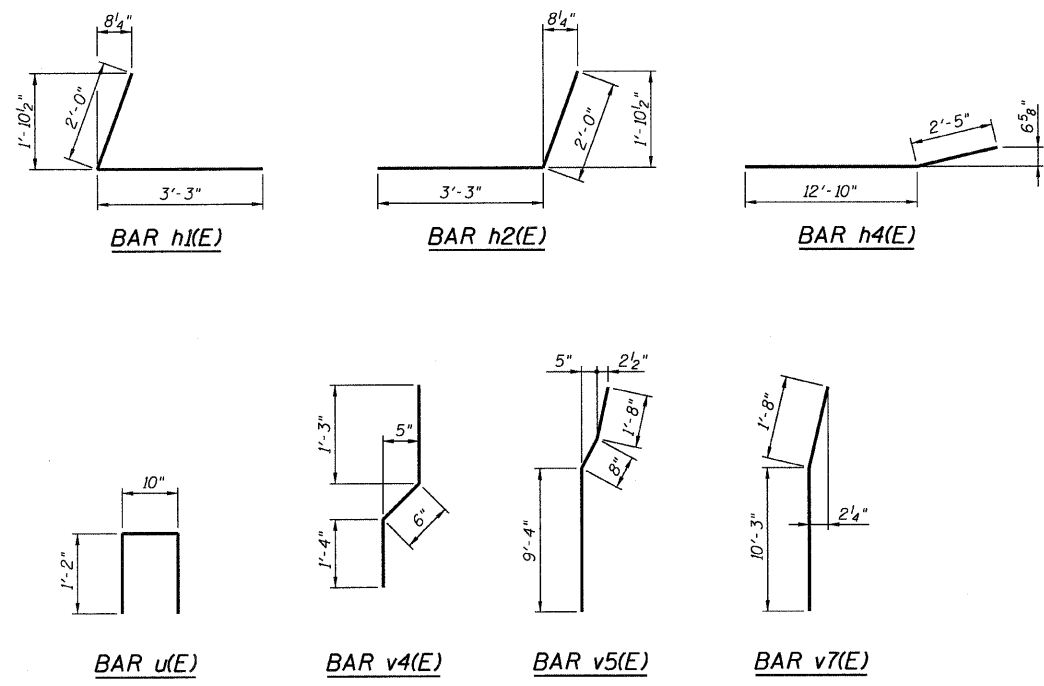
Reinforcement bars designated (E) shall be epoxy coated



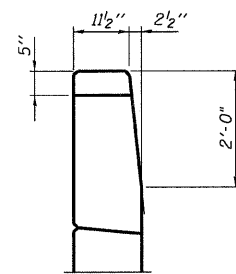
**ELEVATION OF WINGWALL**

**SECTION A-A**

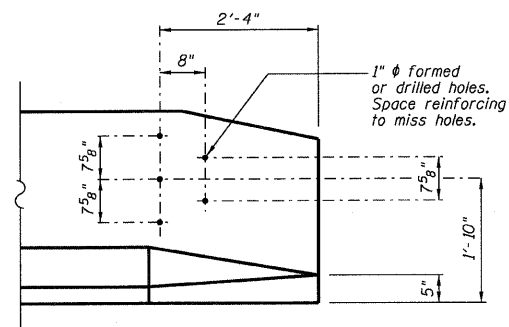
\*Epoxy grout v1(E) bars in 9" (min) drilled holes according to Section 584 in the Standard Specifications.



**SECTION B-B**



**VIEW C-C**



**ANCHOR BOLT LOCATIONS FOR  
TRAFFIC BARRIER TERMINAL, TYPE 6**  
(Typ each parapet)

Notes:  
Quantity of concrete in end post included with "Concrete Superstructure" on Sheet 10 of 30.

WYCKLES ROAD OVER THE SANGAMON RIVER

**SOUTH ABUTMENT DETAILS**

REVISIONS	FAS 1539	SECTION 00-00155-00-BR	DRAWN BY R KING	DATE 9/08
No. DATE INITIALS	STA 30+50.00	SN 058-3030	MACON COUNTY	CHECKED BY JMB
1				DATE 9/08
2				BOOK NUMBER
3				PROJECT No.
4				<b>4698</b>
5				SHEET No.
6				
7				
8				
9				
10				

**HOMER L. CHASTAIN & ASSOCIATES, LLP**  
CONSULTING ENGINEERS  
184-001377

DECATUR CHICAGO  
(317) 422-8544 (773) 714-0050

ROCKFORD  
(815) 489-0050