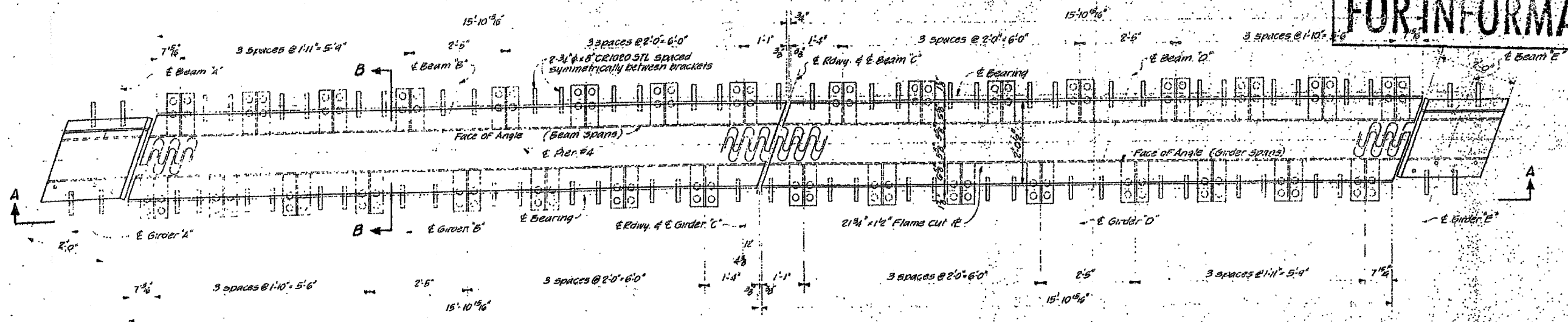
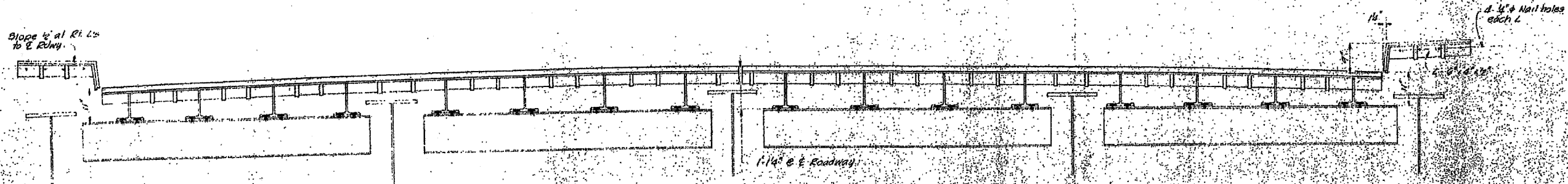


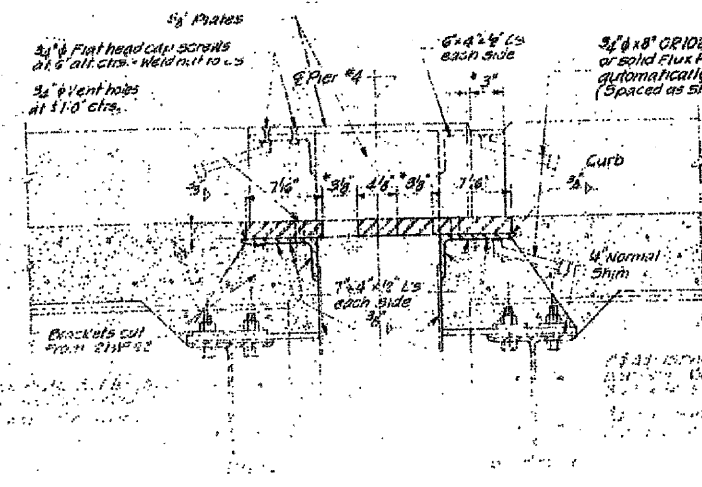
FOR INFORMATION ONLY



PLAN OF FINGER PLATE EXPANSION DEVICE AT PIER #4



SECTION A-A



SECTION B-B

3/8" x 8" CR1020 STL granular or solid flux filled headed studs automatically end welded (Spaced as shown on plan)

Note: Contractor shall provide nominal 1/4" shim plus one 1/2" x 1/4" x 1/4" shim for height adjustment. Seam weld 5/8" curb plate to 5/8" top side walk plate.

* Increase these dimensions by 1/8" each 88°F variation under normal temperature of 50°F. Decrease dimensions the same amount for temperatures above normal.



DETAIL OF FLAME CUT PLATE (Plates shall be match-marked)

FOR INFORMATION ONLY

REVISIONS		STRUCTURAL STEEL		DATE
1	AS BUILT	MACON COUNTY		July 4 63
2		FAS 1539	SECTION 37 Q	ENCLAS AT DATE IV/16 4-63
3		HOMER I. CHASTAIN & ASSOCIATES		PROJECT NO.
4		CONSULTING ENGINEERS		SHEET NO.
5		DECATUR, GEORGIA		