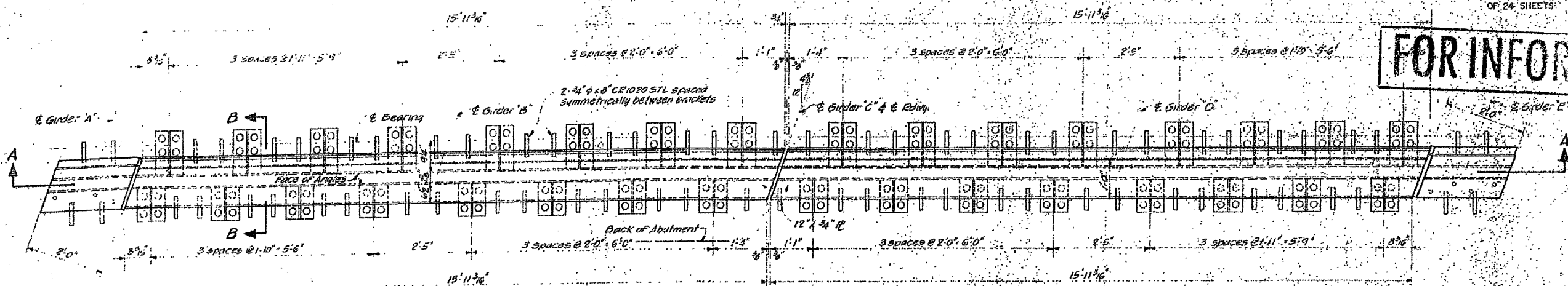
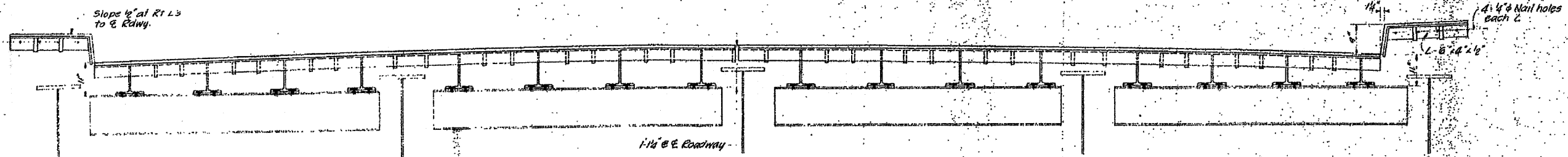


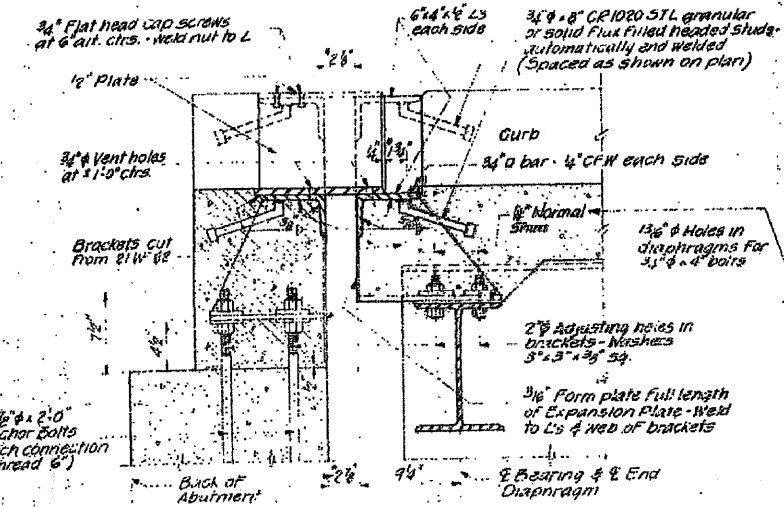
FOR INFORMATION ONLY



PLAN OF SLIDING PLATE EXPANSION DEVICE AT ABUTMENT #1



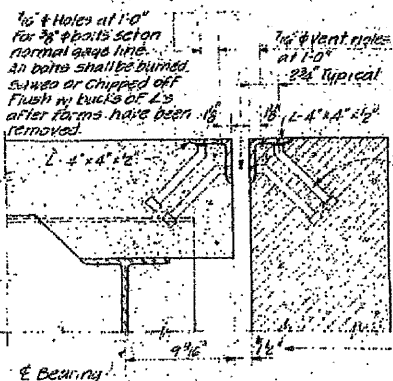
SECTION A-A



SECTION B-B

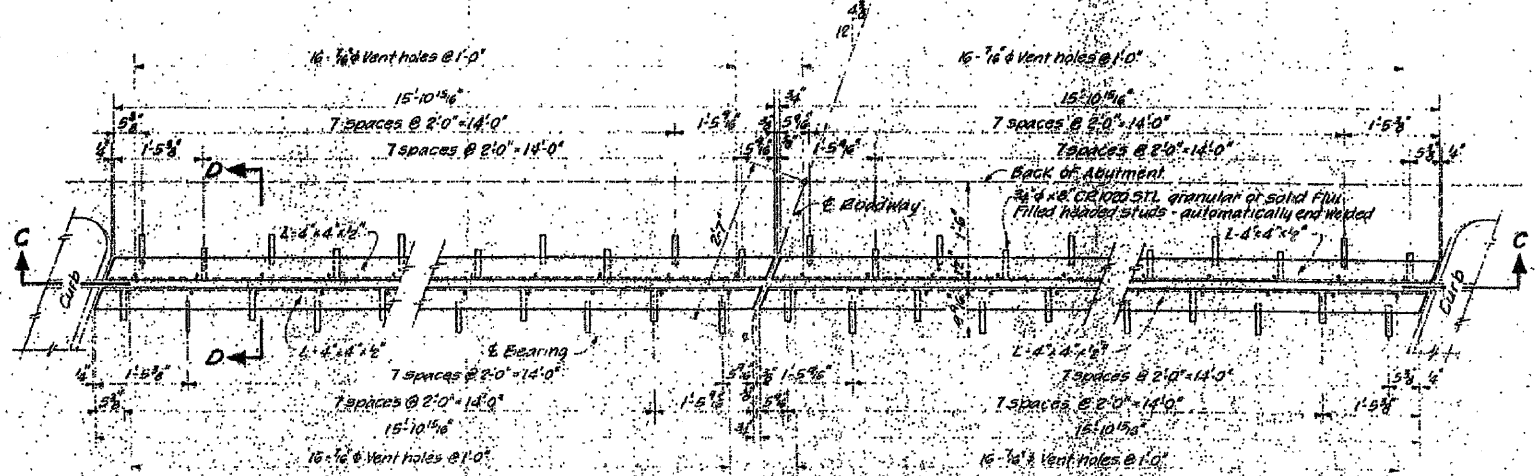
*Increase these dimensions by 1/4" for each 15°F variation under normal temperature of 50°F. Decrease dimensions the same amount for temperatures above normal.

Contractor shall provide normal 1/4" shim plus one 1/8" x 1 1/2" x 1/8" shim for height adjustment. Beam to be cut curb plate to 1/2" top sidewalk plate. Field weld curb plate to 3/4" roadway plate with 5/8" CRF. Field weld exposed portion of 1/2" curb angle to 1/2" roadway angle with 3/8" CRF. Hatched portion to be poured after expansion plate assembly has been adjusted.

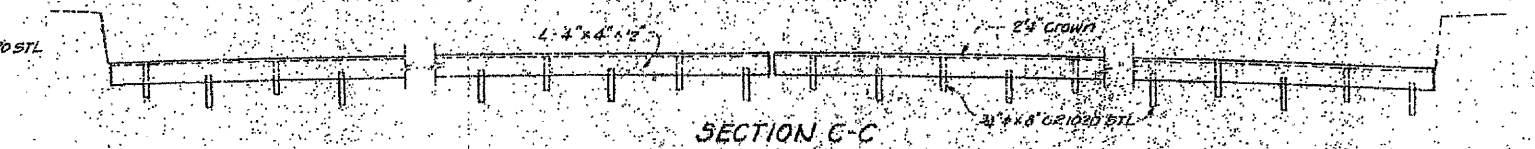


SECTION D-D

*Increase this dimension by 1/4" for each 40°F variation under normal temperature of 50°F. Decrease dimension the same amount for temperatures above normal.



PLAN OF EXPANSION GUARD AT ABUTMENT #2



SECTION E-E

FOR INFORMATION ONLY

REVISIONS		STRUCTURAL STEEL	
1	AS SHOWN	MACON COUNTY	
2		SECTION 37Q	
3		HOMER L. CHASTAIN & ASSOCIATES	
4		CONSULTING ENGINEERS	
5		DECATUR, GEORGIA	