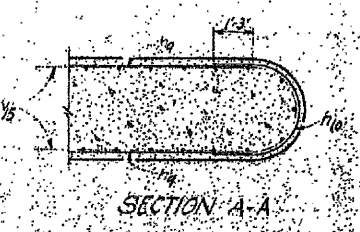
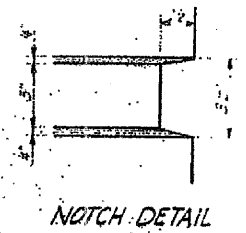
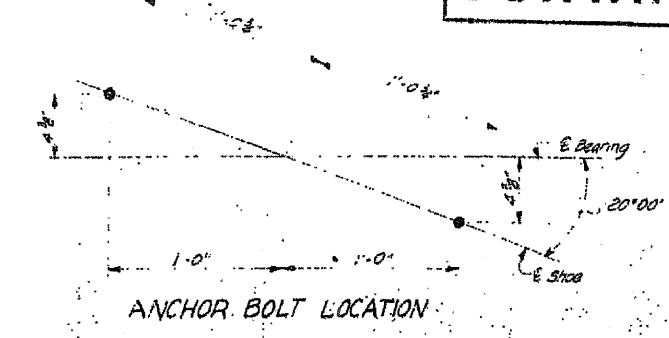
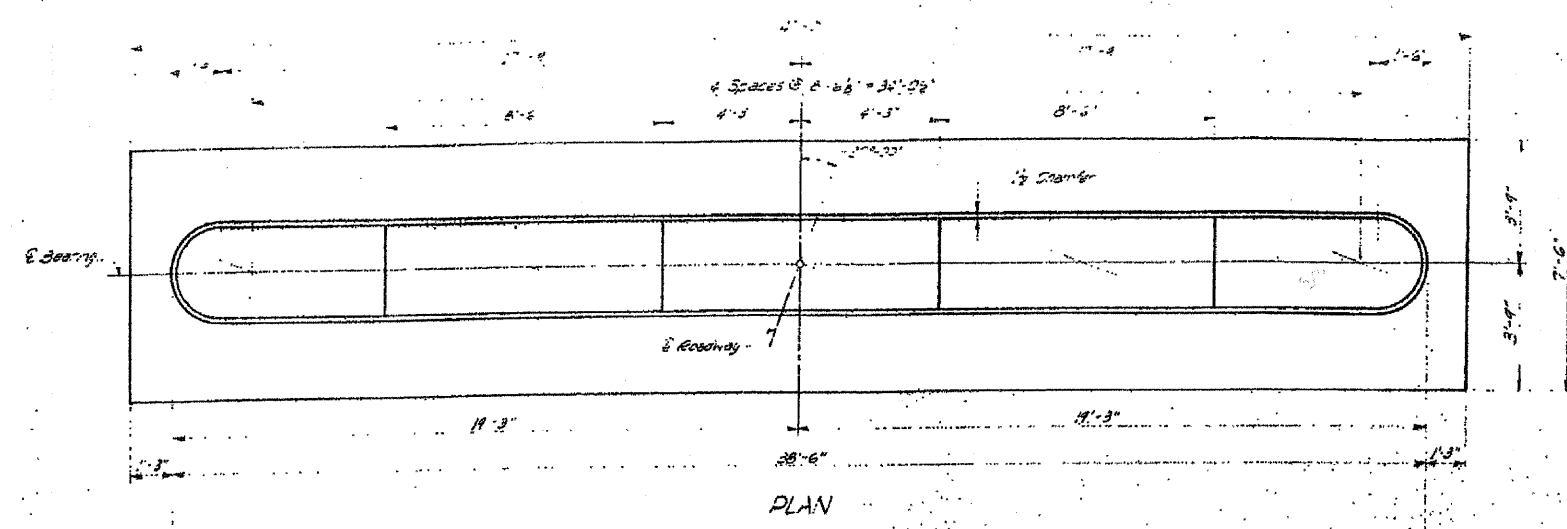
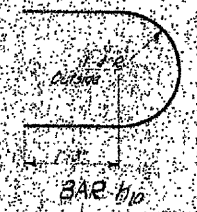
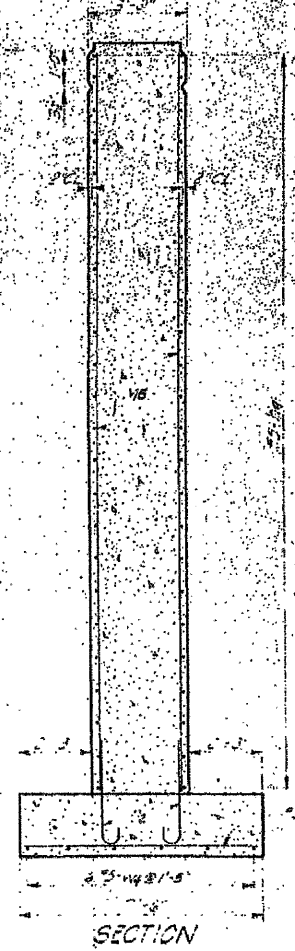
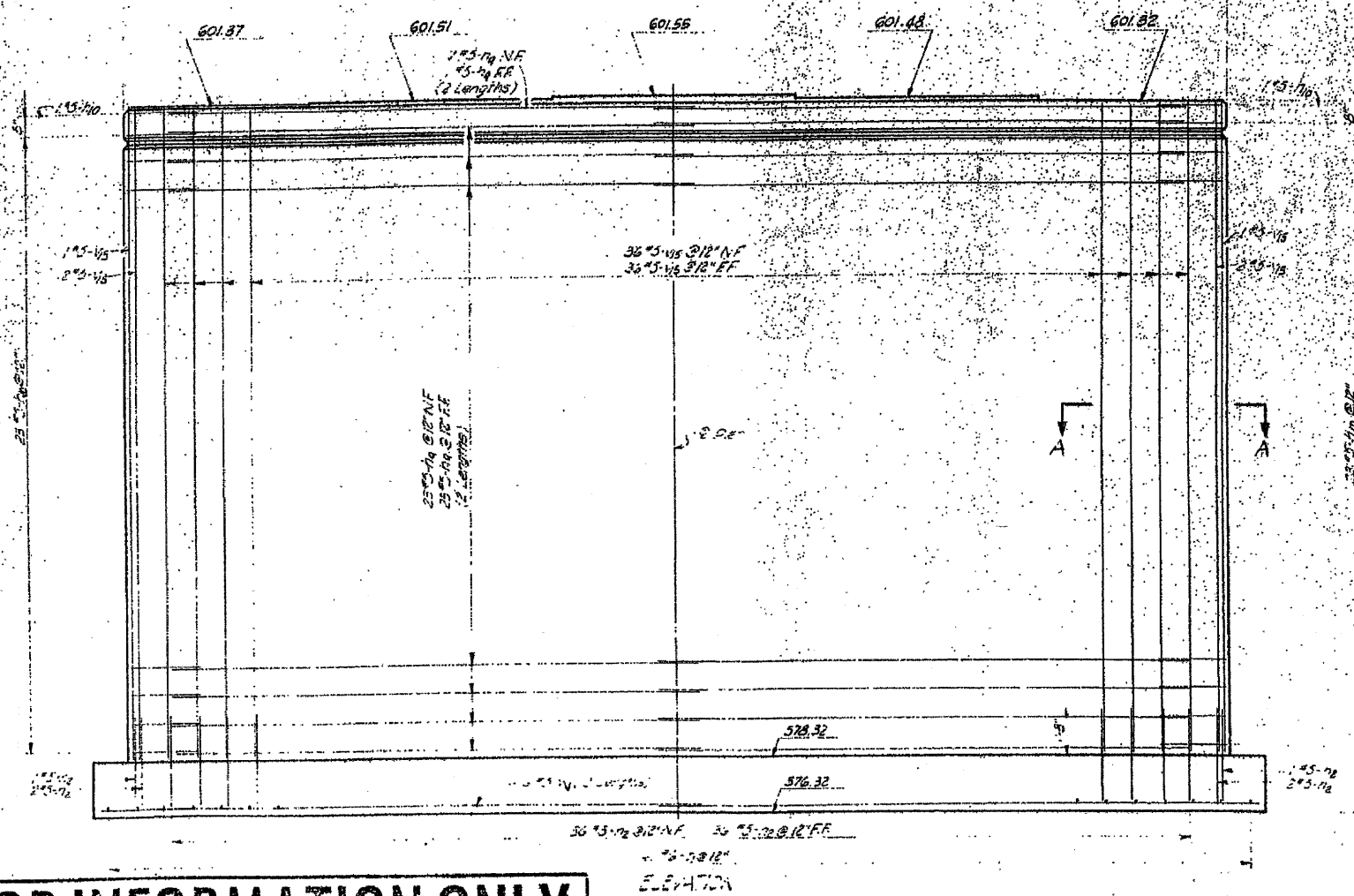


FOR INFORMATION ONLY



BILL OF MATERIAL

BAR NO.	SIZE	LENGTH	SHAPE
1a	#5	18'-6"	—
1b	#5	6'-9"	—
2a	#5	4'-0"	—
3	#6	7'-9"	—
4a	#5	22'-0"	—
4b	#5	21'-0"	—
Class A Concrete			Cu. Yd. 120.0
Reinforcement Bars			Lb. 6000
Class A Excavation For Structures			Cu. Yd. 111
Class B Excavation For Structures			Cu. Yd. 115



Maximum Soil Pressure = 2.9 Tons/Sq. Ft.

FOR INFORMATION ONLY

Minimum lap for all reinforcement bars shall be 20 bar diameters

PIER NO. 1

REVISIONS	MACON COUNTY F.A.S. RT. 1539 SECTION 37 0	DESIGNED BY DATE 0.22 3-63
		CHECKED BY DATE F.L.C. 3-63
		SCALE NUMBER
		PROJECT NO.
		SHEET NO.

HOMER L. CHASTAIN & ASSOCIATES
CONSULTING ENGINEERS
DECATUR, ILLINOIS