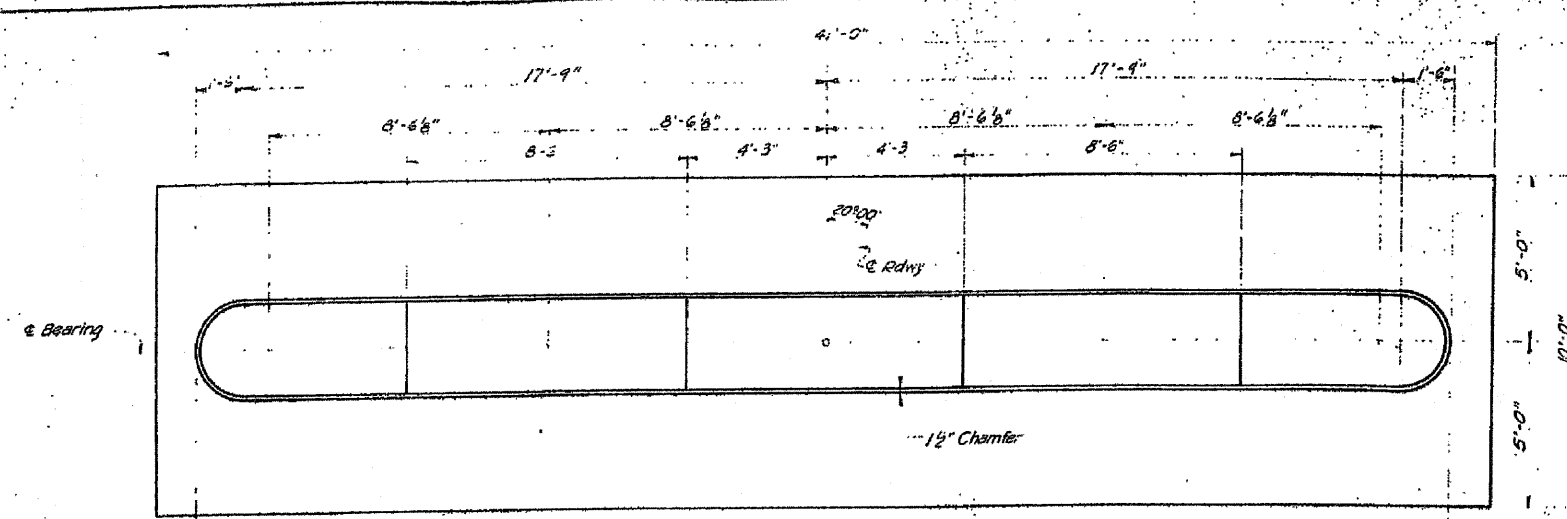


**FOR INFORMATION ONLY**

SHEET NO. 14  
OF 24 SHEETS

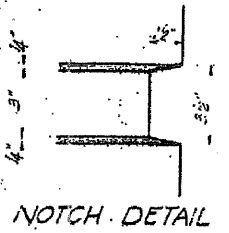
F.A.S. 1539	SECTION 37 Q	MACON	66	29
PROJECT S-1539-1(1)				



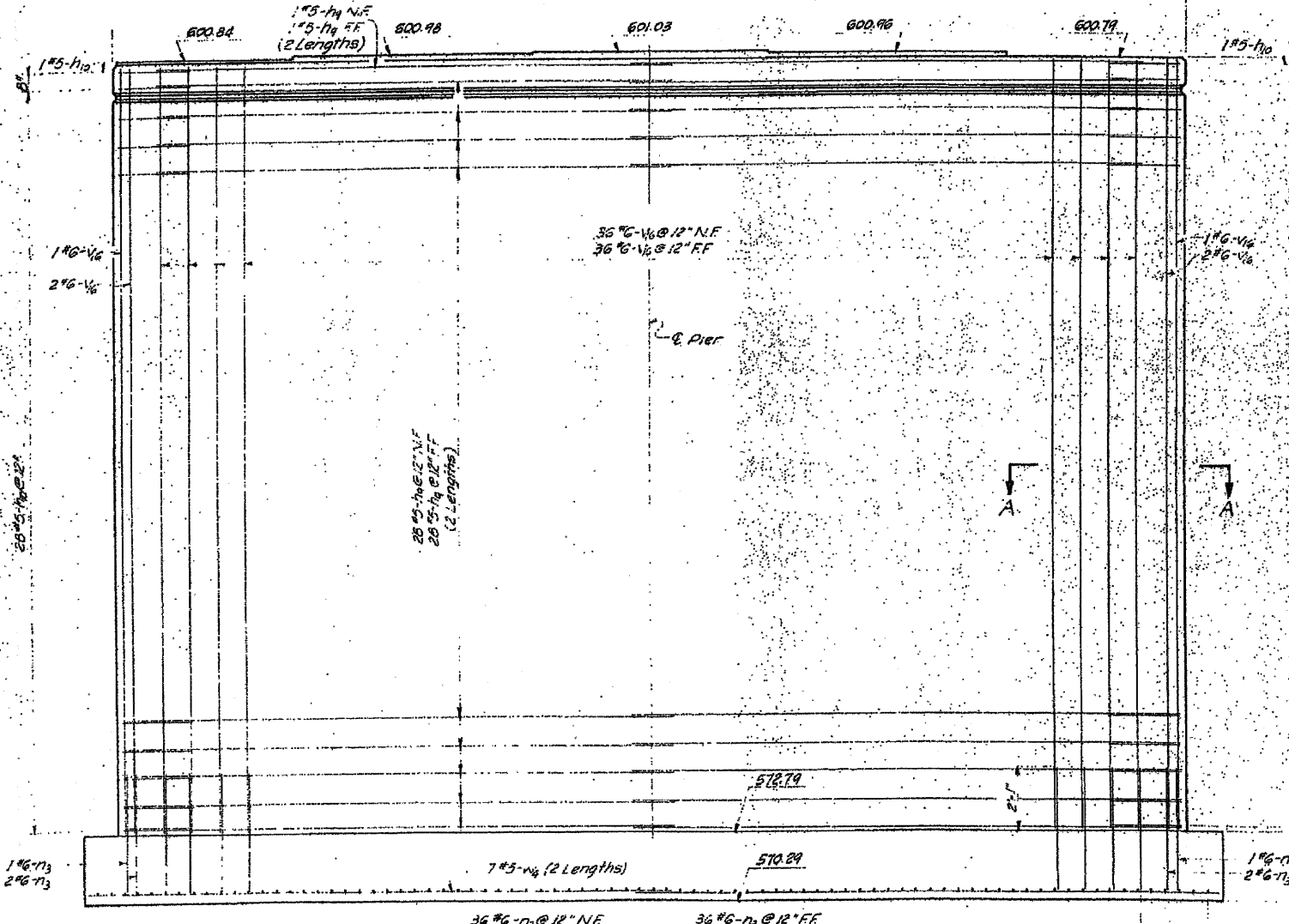
PLAN



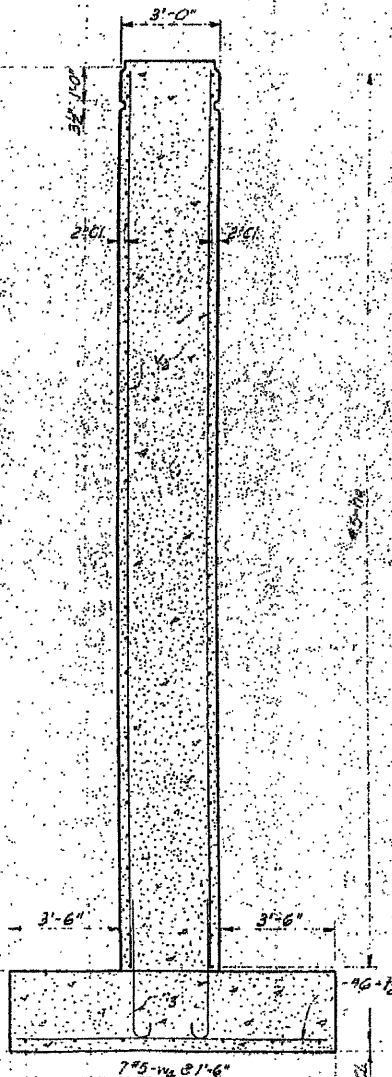
ANCHOR BOLT LOCATION



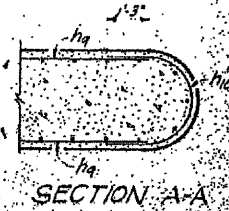
NOTCH DETAIL



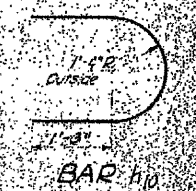
ELEVATION



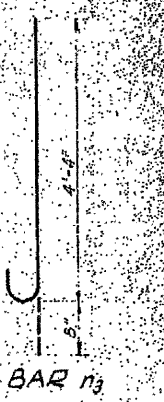
SECTION



SECTION A-A



BAR h10



BAR h3

BILL OF MATERIAL				
BAR	No.	SIZE	LENGTH	SHAPE
h4	116	#5	18'-6"	
h10	58	#5	6'-9"	
h3	78	#5	5'-0"	
h2	81	#6	4'-6"	
h6	70	#5	27'-10"	
h4	16	#5	21'-0"	
Class A Concrete		Cu. Yd.	150.1	
Reinforcement Bars		Lb.	7980	
Class A Excavation for Structures		Cu. Yd.	33	
Class B Excavation for Structures		Cu. Yd.	280	

Maximum Soil Pressure = 3.2 Tons / Sq. Ft.

**FOR INFORMATION ONLY**

Minimum lap for all reinforcement bars shall be 20 bar diameters

<b>PIER NO. 2</b> <b>MACON COUNTY</b> <b>F.A.S. RT. 1539 SECTION 37 Q</b>		DRAWN BY DATE CHECKED BY DATE EOOD NUMBER
<b>HOMER L. CHASTAIN &amp; ASSOCIATES</b> CONSULTING ENGINEERS DECATUR, ILLINOIS		PROJECT NO. SHEET NO.