

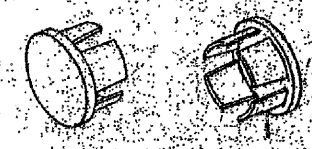
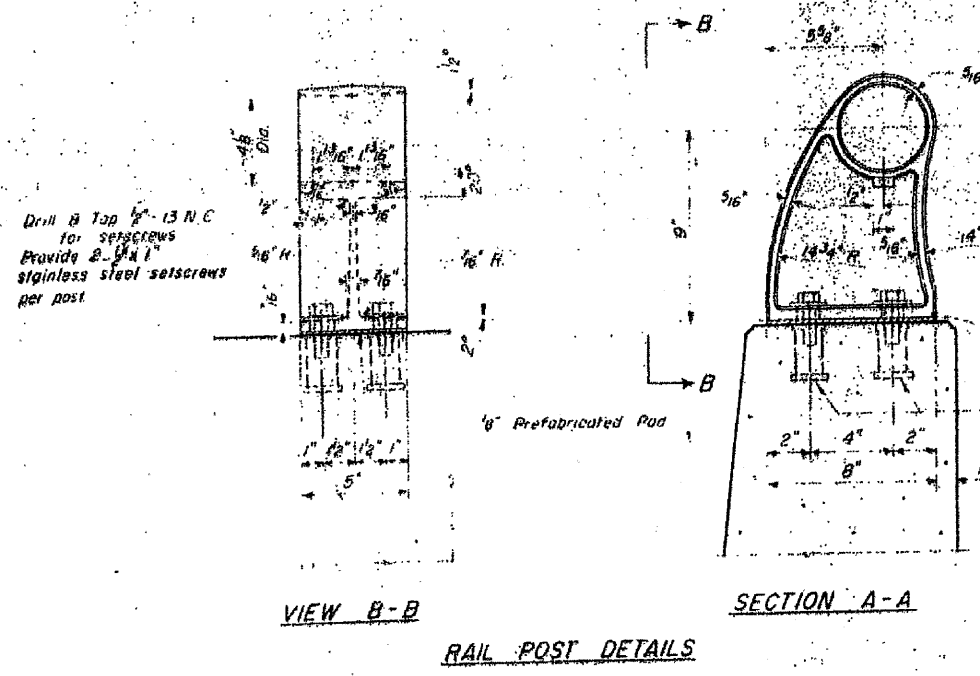
STATE OF ILLINOIS
DEPARTMENT OF PUBLIC WORKS & BUILDINGS
DIVISION OF HIGHWAYS

FAS 1539 37Q MACON 66 34
S-1939-1(1)

SHEET NO. 34
SHEETS

FOR INFORMATION ONLY

NOTE:
For handrail post spacing, see sheet No. 33.

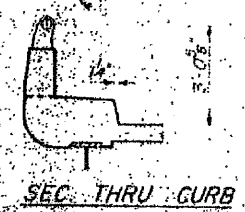
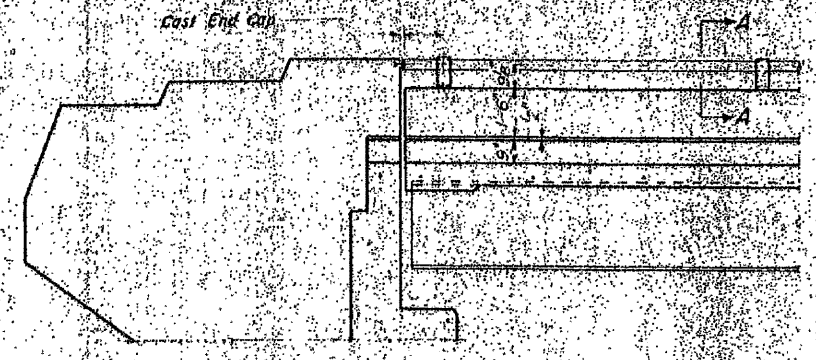


CAST END CAP
DRIVE FIT TYPE
4 Required
Galvanize to ASTM A-153
Incidental to Item "Metal Handrail"

3/8" Threaded Inserts. Provide 1" Stainless Steel Washer and 1-3/8" x 2" Stainless Steel Bolt with each Insert
4 Required each post
Inserts shall be cast in place.

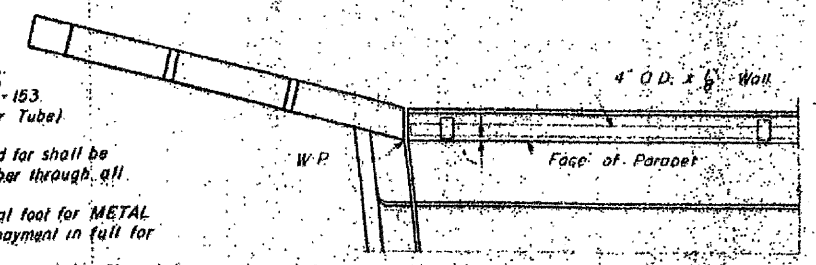
NOTES

- All Posts shall be placed normal to parapet.
- All Posts shall be malleable cast iron conforming to ASTM A-47, Grade 35018, or Grade 32510 galvanized to ASTM A-153.
- All Rail Tubing shall conform to ASTM A-53, Grade B, (Pipe or Tube) galvanized to ASTM A-120.
- Metal handrail shall be measured in linear feet. The length paid for shall be the overall length along the top longitudinal railing member through all posts and gaps.
- Metal handrail will be paid for at the contract unit price per linear foot for METAL HANDRAIL, measured as specified, which price shall be payment in full for all materials, fabrication, transportation, and erection.
- If any of the galvanizing coat is damaged or removed during erection, the affected area shall be painted with one coat of zinc paint in accordance with Military Specification MIL-P-26915 Type I, air-dry cure.
- Rail Tubing may be cut to random lengths.
- For material composition of Prefabricated Pad, see Art. 542 (1), (Bearing and Anchorage), of the Standard Specifications.
- Galvanized railing shall not be painted.



BILL OF MATERIAL

Item	Unit	Quantity
METAL HANDRAIL	Lin. Ft.	14.02



TYPE E METAL HANDRAIL

PROJECT S-1939-1(1)
F.A.S. ROUTE 1539
SECTION 37Q
MACON COUNTY

FOR INFORMATION ONLY