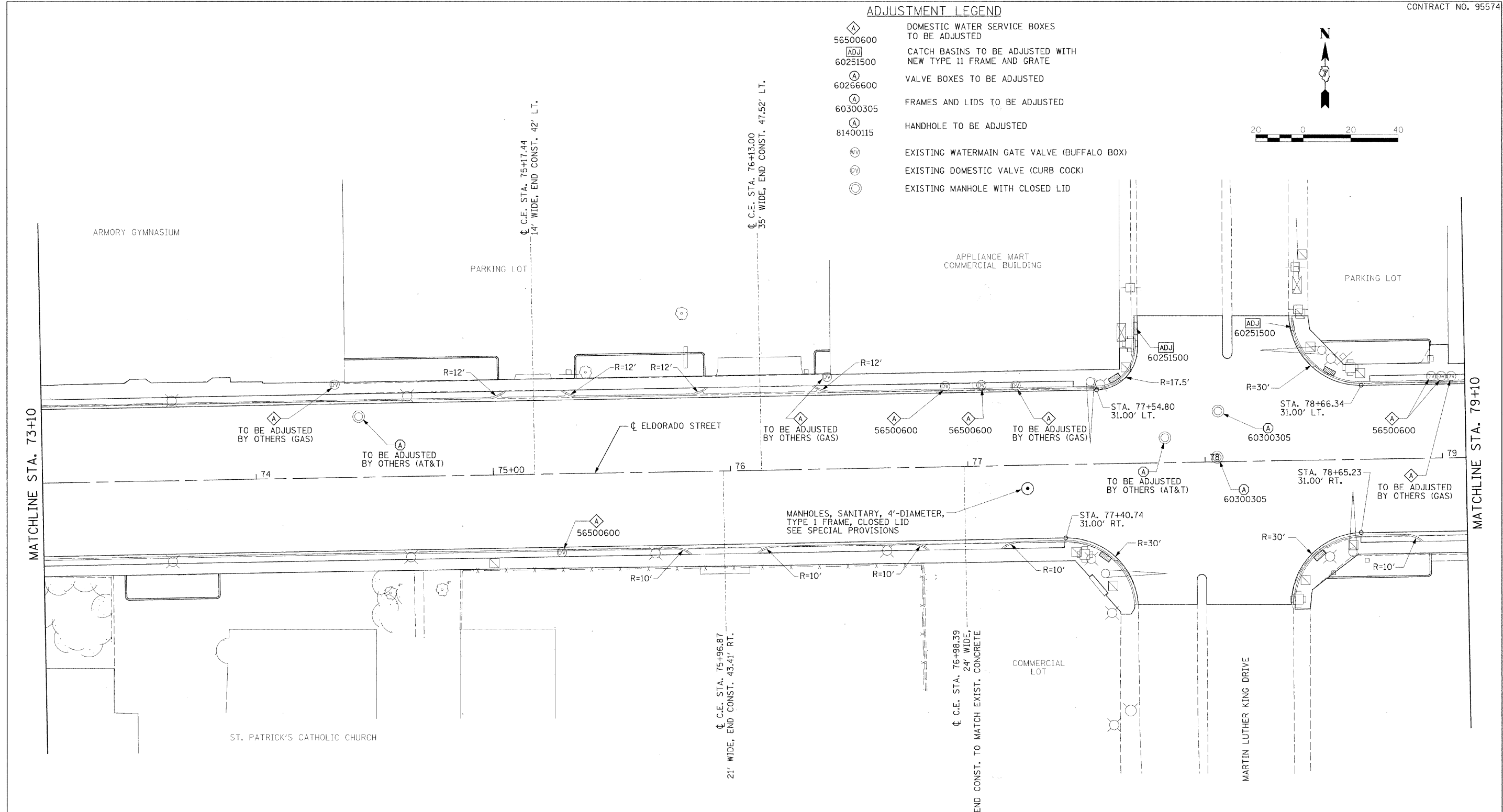
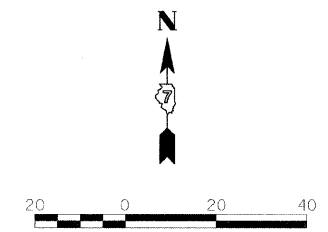


ADJUSTMENT LEGEND

- ◊ 56500600 DOMESTIC WATER SERVICE BOXES TO BE ADJUSTED
- ADJ 60251500 CATCH BASINS TO BE ADJUSTED WITH NEW TYPE 11 FRAME AND GRATE
- ⊙ 60266600 VALVE BOXES TO BE ADJUSTED
- ⊙ 60300305 FRAMES AND LIDS TO BE ADJUSTED
- ⊙ 81400115 HANDHOLE TO BE ADJUSTED
- ⊙ EXISTING WATERMAIN GATE VALVE (BUFFALO BOX)
- ⊙ EXISTING DOMESTIC VALVE (CURB COCK)
- ⊙ EXISTING MANHOLE WITH CLOSED LID



NOTES:
 STATION AND OFFSETS ARE TO PROPOSED EDGE OF PAVEMENT/GUTTER FLAG.
 STATION AND OFFSET ALONG ELDORADO STREET SHALL BE MAINTAINED.
 RADIUS LISTED MAY BE ADJUSTED IN THE FIELD TO MATCH INTO EXISTING RETURNS ON SIDE STREETS AND TO ACCOMMODATE FOR NEW FRAME AND GRATE ALIGNMENT ON ADJUSTED CATCH BASINS.
 ENTRANCE RADII ARE MEASURED TO THE BACK OF CURB.
 FOR SIDEWALK, CONCRETE CURB TYPE B, AND UNIT PAVER HORIZONTAL CONTROL, SEE STREETSCAPE PLAN SHEETS.

URS	USER NAME =	DESIGNED - BKN	REVISED - March 12, 2009	STATE OF ILLINOIS DEPARTMENT OF TRANSPORTATION	PROPOSED ROADWAY PLAN		F.A.P. RTE. =	SECTION	CITY	TOTAL SHEETS	SHEET NO.
	PLOT SCALE =	DRAWN - BKN/RLS/MEC/CCF	REVISED -				323	06-00625-00-SW	DECATUR	121	29
	PLOT DATE =	CHECKED - JJM	REVISED -				ELDORADO STREETSCAPE PROJECT CONTRACT NO. 95574				
		DATE -	REVISED -				FED. ROAD DIST. NO. ILLINOIS/FED. AID PROJECT: TE-0007(35)				