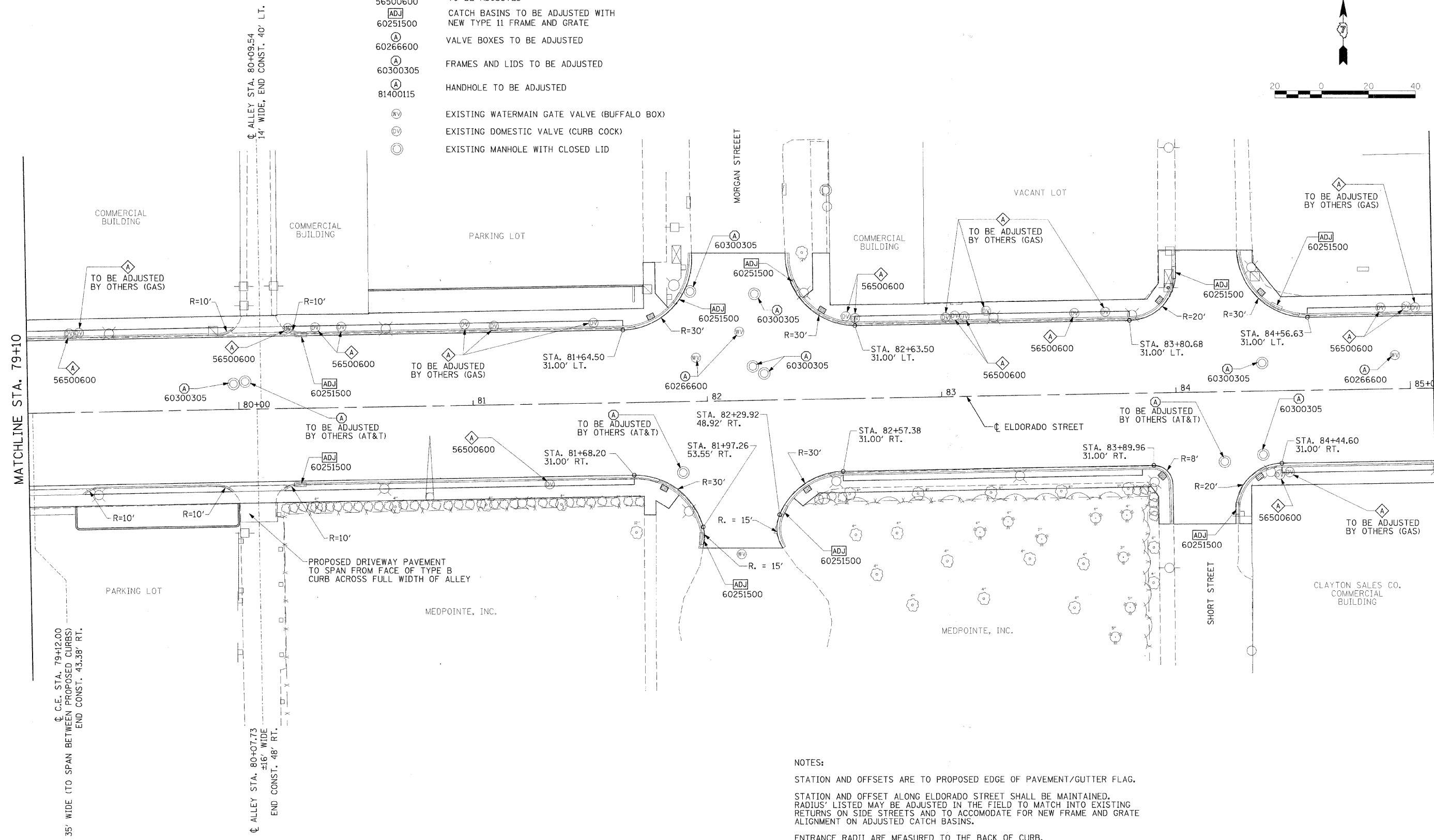
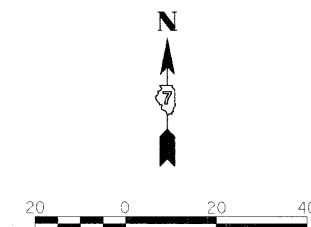


ADJUSTMENT LEGEND

- ◇ 56500600 DOMESTIC WATER SERVICE BOXES TO BE ADJUSTED
- ADJ 60251500 CATCH BASINS TO BE ADJUSTED WITH NEW TYPE 11 FRAME AND GRATE
- Ⓐ 60266600 VALVE BOXES TO BE ADJUSTED
- Ⓐ 60300305 FRAMES AND LIDS TO BE ADJUSTED
- Ⓐ 81400115 HANDHOLE TO BE ADJUSTED
- Ⓜ EXISTING WATERMAIN GATE VALVE (BUFFALO BOX)
- Ⓞ EXISTING DOMESTIC VALVE (CURB COCK)
- Ⓞ EXISTING MANHOLE WITH CLOSED LID



NOTES:  
 STATION AND OFFSETS ARE TO PROPOSED EDGE OF PAVEMENT/GUTTER FLAG.  
 RADIUS LISTED MAY BE ADJUSTED IN THE FIELD TO MATCH INTO EXISTING RETURNS ON SIDE STREETS AND TO ACCOMMODATE FOR NEW FRAME AND GRATE ALIGNMENT ON ADJUSTED CATCH BASINS.  
 ENTRANCE RADII ARE MEASURED TO THE BACK OF CURB.  
 FOR SIDEWALK, CONCRETE CURB TYPE B, AND UNIT PAVER HORIZONTAL CONTROL, SEE STREETSCAPE PLAN SHEETS.



USER NAME =	DESIGNED - BKN	REVISED -
PLOT SCALE =	DRAWN - BKN/RLS/MEC/CGF	REVISED -
PLOT DATE =	CHECKED - JJM	REVISED -
	DATE -	REVISED -

STATE OF ILLINOIS  
 DEPARTMENT OF TRANSPORTATION

PROPOSED ROADWAY PLAN

SHEET NO. 5 OF 6 SHEETS STA. 79+10.00 TO STA. 85+10.00

F.A.P. RTE.	SECTION	CITY	TOTAL SHEETS	SHEET NO.
323	06-00625-00-SW	DECATUR	121	30
ELDORADO STREETSCAPE PROJECT			CONTRACT NO. 95574	
FED. ROAD DIST. NO. - [ILLINOIS] FED. AID PROJECT: TE-00071359				