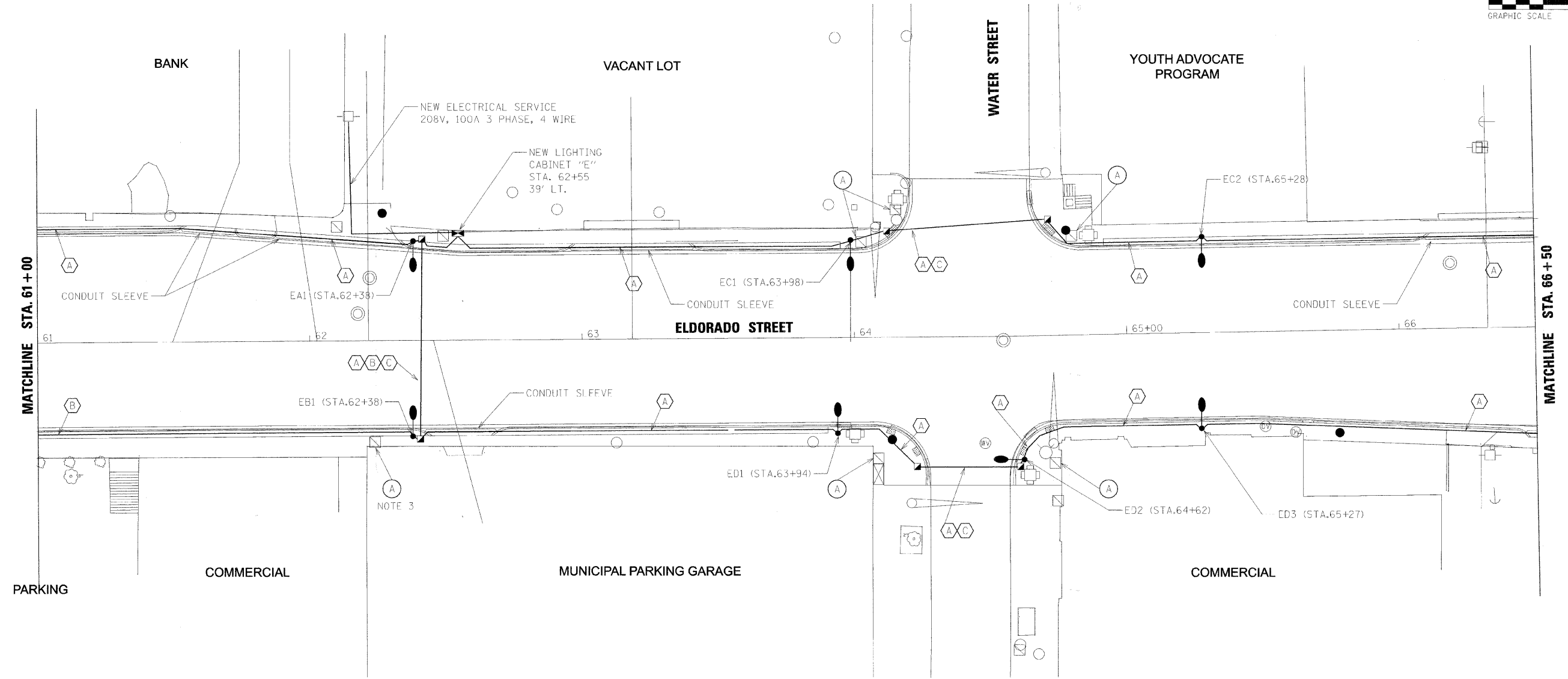
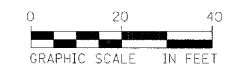


**NOTES:**

1. ALL LIGHT POLES ARE OFFSET 2' FROM FACE OF CURB TO FACE OF THE CLAM SHELL BASE UNLESS OTHERWISE NOTED.
2. CONDUIT ACROSS STREETS SHALL BE PUSHED.
3. HANDHOLE IS FOR GAS, SHALL BE ADJUSTED BY OTHERS.

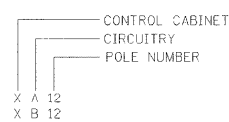


**LEGEND**

- (A) HANDHOLE TO BE ADJUSTED 81400115
- PROPOSED STREET LIGHT LOCATION 30' POLE
- ⊗ EXISTING STREET LIGHT TO REMAIN
- PROPOSED HANDHOLE
- EXISTING HANDHOLE

**LEGEND**

- (A) UNIT DUCT 2-1/2" x 8, 1/2" x 8 GROUND (XLP-TYPE USE)
- (B) UNIT DUCT 2-1/2" x 6, 1/2" x 8 GROUND (XLP-TYPE USE)
- (C) 3" RIGID GALV. STEEL PUSHED
- ══ CONDUIT SLEEVE FOR UNIT DUCT 2" RIGID GALV. STEEL
- (P) PAINT EXISTING POLE & INSTALL CLAM SHELL BASE



FILE NAME: \*FILE\*



USER NAME =	DESIGNED - DAD	REVISED - March 13, 2009
PLOT SCALE =	DRAWN - DAD/KJB/WM	REVISED - March 23, 2009
PLOT DATE =	CHECKED - JJM	REVISED -
	DATE -	REVISED -

**STATE OF ILLINOIS  
DEPARTMENT OF TRANSPORTATION**

**ROADWAY LIGHTING PLANS  
STA 61+00 TO 66+50**

SHEET NO. 2 OF 6 SHEETS STA. 61+00 TO STA. 66+50

F.A.P. RTE.	SECTION	CITY	TOTAL SHEETS	SHEET NO.
323	06-00625-00-SW	DECATUR	121	74
ELDORADO STREETSCAPE PROJECT			CONTRACT NO. 95574	
FED. ROAD DIST. NO. ILLINOIS FED. AID PROJECT: TE-00071351				