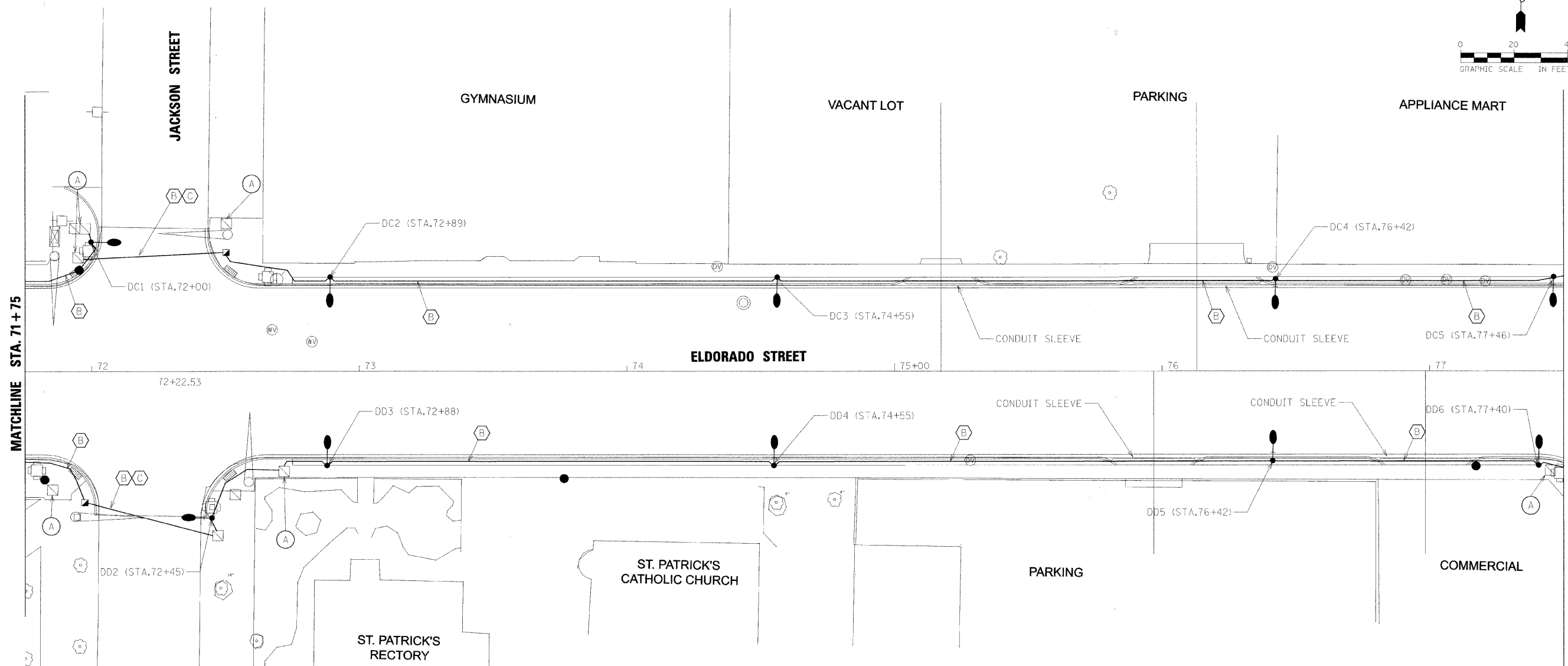
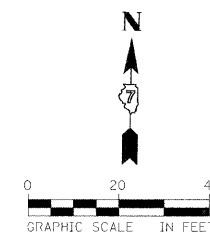


NOTES:

1. ALL LIGHT POLES ARE OFFSET 2' FROM FACE OF CURB TO FACE OF THE CLAM SHELL BASE UNLESS OTHERWISE NOTED.
2. CONDUIT ACROSS STREETS SHALL BE PUSHED.

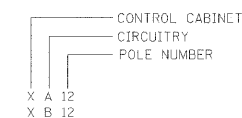


LEGEND

- (A) HANDHOLE TO BE ADJUSTED 81400115
- PROPOSED STREET LIGHT LOCATION 30' POLE
- ⊗ EXISTING STREET LIGHT TO REMAIN
- PROPOSED HANDHOLE
- EXISTING HANDHOLE

LEGEND

- (A) UNIT DUCT 2-1/C#8, 1/C#8 GROUND (XLP-TYPE USE)
- (B) UNIT DUCT 2-1/C#6, 1/C#8 GROUND (XLP-TYPE USE)
- (C) 3" RIGID GALV. STEEL PUSHED
- CONDUIT SLEEVE FOR UNIT DUCT 2" RIGID GALV. STEEL
- (P) PAINT EXISTING POLE & INSTALL CLAM SHELL BASE



FILE NAME = #FILES



USER NAME =	DESIGNED - DAD	REVISED - March 13, 2009
	DRAWN - DAD/KJB/WM	REVISED - March 23, 2009
PLOT SCALE =	CHECKED - JJM	REVISED -
PLOT DATE =	DATE -	REVISED -

**STATE OF ILLINOIS
DEPARTMENT OF TRANSPORTATION**

**ROADWAY LIGHTING PLANS
STA 71+75 TO 77+50**

SHEET NO. 4 OF 6 SHEETS STA. 71+75 TO STA. 77+50

F.A.P. RTE.	SECTION	CITY	TOTAL SHEETS	SHEET NO.
323	06-00625-00-SW	DECATUR	121	76
ELLDORADO STREETSCAPE PROJECT			CONTRACT NO. 95574	
FED. ROAD DIST. NO.			ILLINOIS FED. AID PROJECT: TE-0007351	