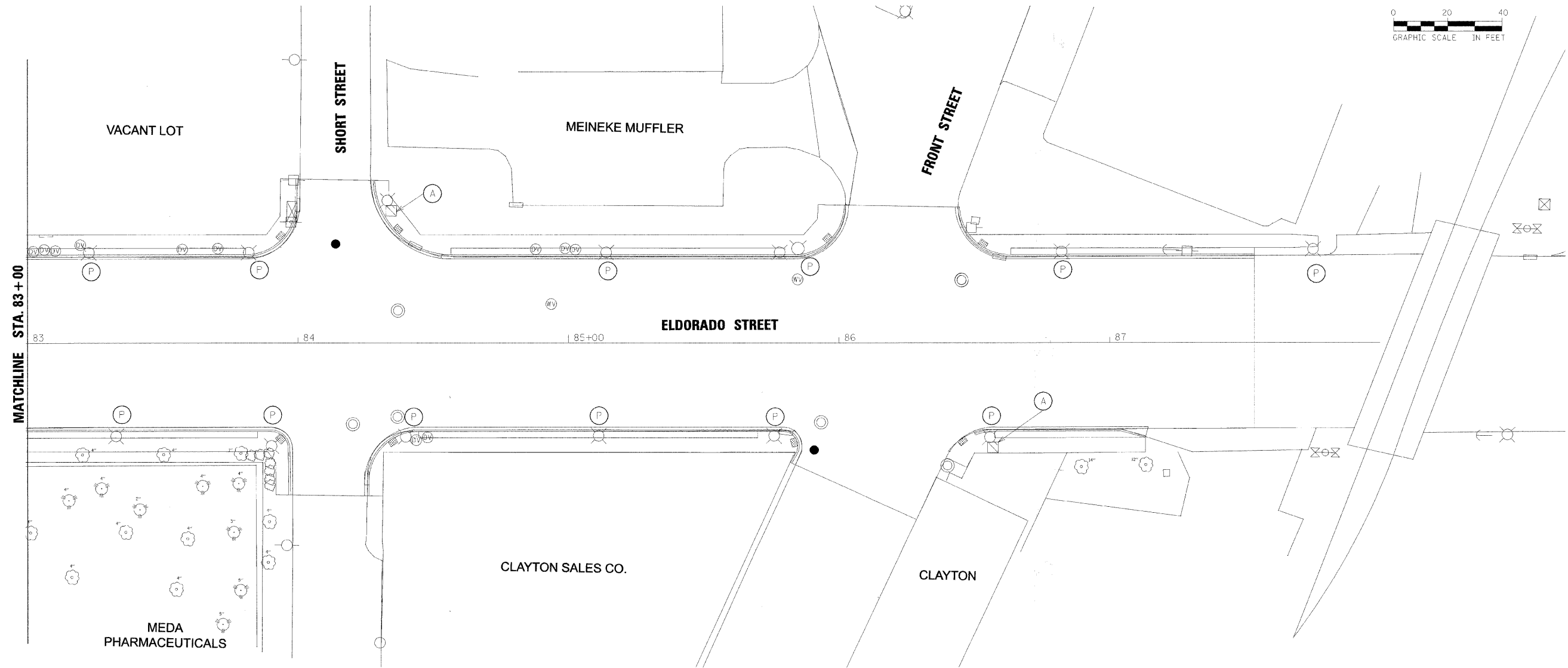
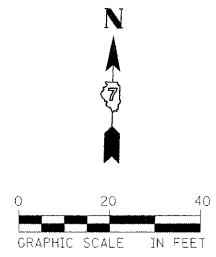


NOTES:

1. ALL LIGHT POLES ARE OFFSET 2' FROM FACE OF CURB TO FACE OF THE CLAM SHELL BASE UNLESS OTHERWISE NOTED.
2. CONDUIT ACROSS STREETS SHALL BE PUSHED.
3. SEE LANDSCAPE PLANS FOR CLAM SHELL BASE DETAILS

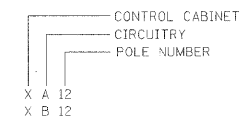


LEGEND

- (A) HANDHOLE TO BE ADJUSTED 81400115
- PROPOSED STREET LIGHT LOCATION 30' POLE
- EXISTING STREET LIGHT TO REMAIN
- PROPOSED HANDHOLE
- EXISTING HANDHOLE

LEGEND

- (A) UNIT DUCT 2-1/2" C#8, 1/2" C#8 GROUND (XLP-TYPE USE)
- (B) UNIT DUCT 2-1/2" C#6, 1/2" C#8 GROUND (XLP-TYPE USE)
- (C) 3" RIGID GALV. STEEL PUSHED
- CONDUIT SLEEVE FOR UNIT DUCT 2" RIGID GALV. STEEL
- (P) PAINT EXISTING POLE & INSTALL CLAM SHELL BASE, SEE NOTE 3



FILE NAME = #FILE#



USER NAME =	DESIGNED - DAD	REVISED - March 13, 2009
	DRAWN - DAD/KJB/WM	REVISED - March 23, 2009
PLOT SCALE =	CHECKED - JJM	REVISED -
PLOT DATE =	DATE -	REVISED -

**STATE OF ILLINOIS
DEPARTMENT OF TRANSPORTATION**

**ROADWAY LIGHTING PLANS
STA 83+00 TO END**

SHEET NO. 6 OF 6 SHEETS STA. 83+00 TO STA. 88+00

F.A.P. RTE.	SECTION	CITY	TOTAL SHEETS	SHEET NO.
323	06-00625-00-SW	DECATUR	121	78
ELDORADO STREETScape PROJECT			CONTRACT NO. 95574	
FED. ROAD DIST. NO. ILLINOIS FED. AID PROJECT: TE-00071351				