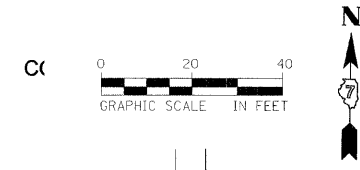


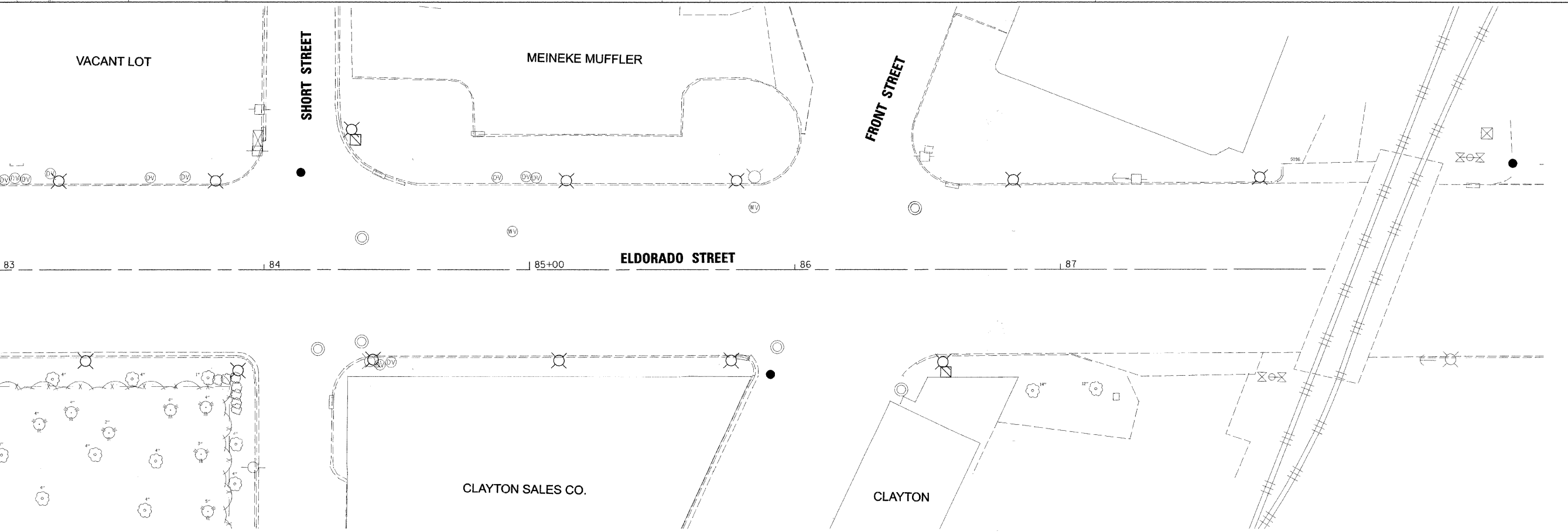
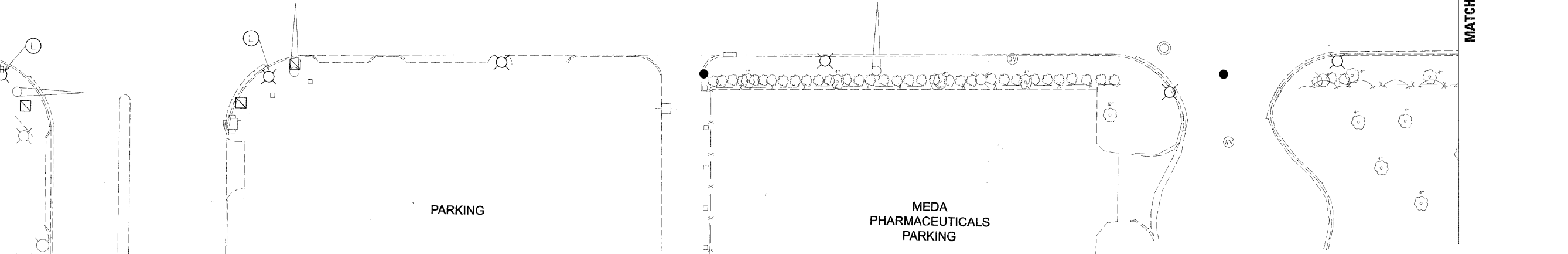
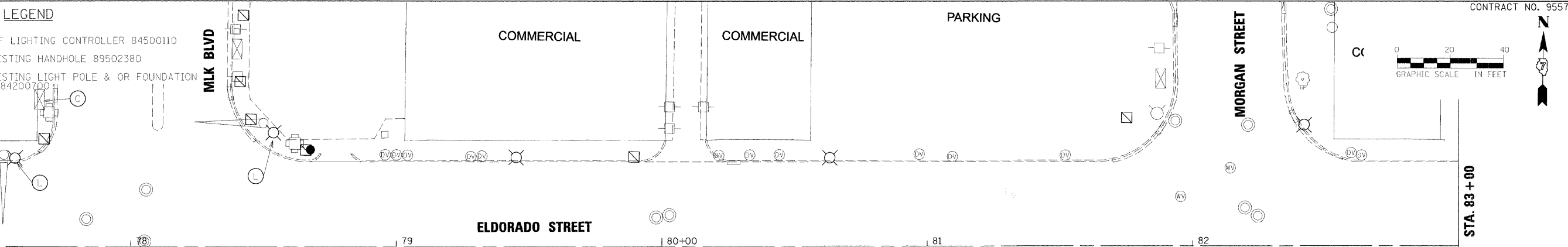
LEGEND

- (C) REMOVAL OF LIGHTING CONTROLLER 84500110
- (H) REMOVE EXISTING HANDHOLE 89502380
- (L) REMOVE EXISTING LIGHT POLE & OR FOUNDATION 84200500, 84200700



MATCHLINE STA. 77+50

MATCHLINE STA. 83+00



FILE NAME = #FILES



USER NAME =	DESIGNED - DAD	REVISED - March 13, 2009
PLOT SCALE =	DRAWN - DAD/KJS/WM	REVISED - March 23, 2009
PLOT DATE =	CHECKED - JJM	REVISED -
	DATE -	REVISED -

**STATE OF ILLINOIS
DEPARTMENT OF TRANSPORTATION**

**ROADWAY LIGHTING DEMOLITION PLANS
STA 77+50 TO 87+99.91**

SHEET NO. 3 OF 3 SHEETS STA. 77+50 TO STA. 87+99.91

F.A.P. RTE.	SECTION	CITY	TOTAL SHEETS	SHEET NO.
323	06-00625-00-SW	DECATUR	121	81
ELDORADO STREETScape PROJECT CONTRACT NO. 95574				
FED. ROAD DIST. NO. ILLINOIS FED. AID PROJECT: TE-00D7(35)				