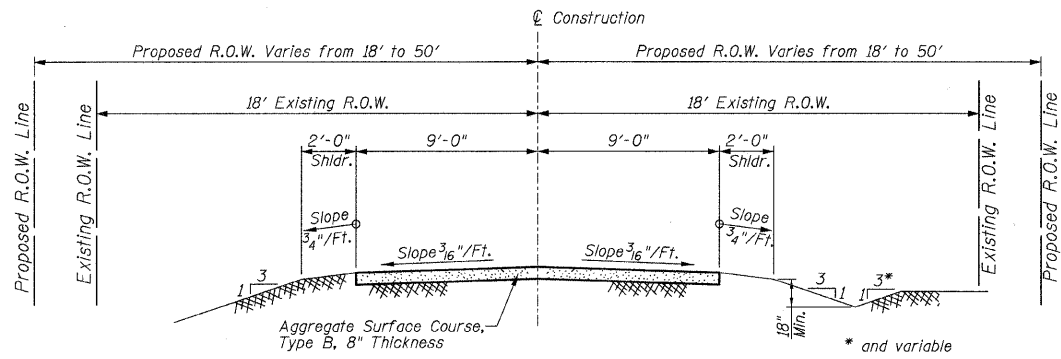
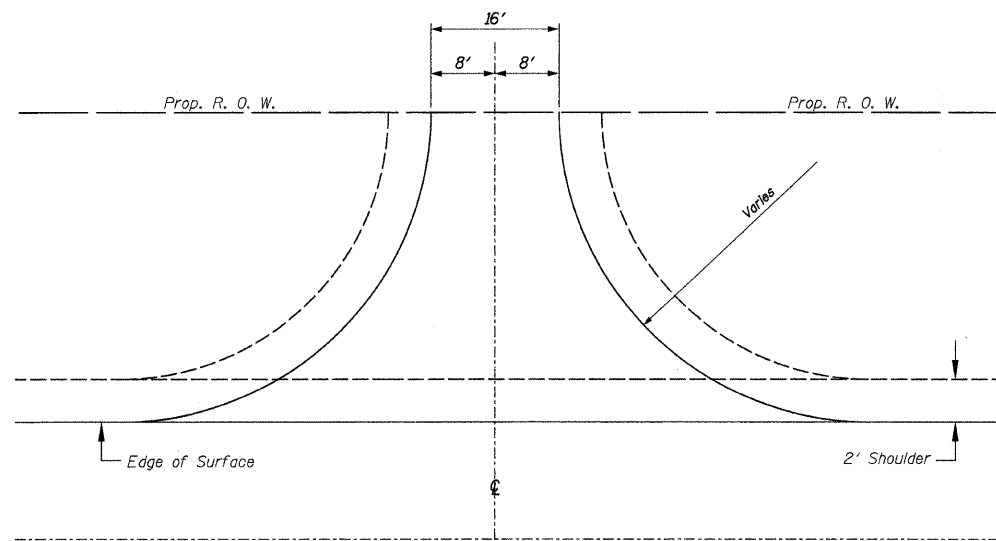


**TYPICAL SECTION
EXISTING APPROACH ROADWAY**



**TYPICAL SECTION
PROPOSED APPROACH ROADWAY**



Aggregate Surface Course, Type B 6" Depth
Rt., Sta. 9+18.35 - 58 Ton
Lt., Sta. 10+65.00 - 28 Ton
(Included in Summary of Quantities)

TYPICAL PRIVATE ENTRANCE

SUMMARY OF QUANTITIES

| Code No. | Item | Unit | Quantity | Location | |
|------------|---|-------|----------|----------|------|
| | | | | X081-2A | E000 |
| 20100500 | TREE REMOVAL, ACRES | ACRES | 0.5 | - | 0.5 |
| * 20200100 | EARTH EXCAVATION | CU YD | 1176 | - | 1176 |
| 20300100 | CHANNEL EXCAVATION | CU YD | 270 | 270 | - |
| 20400800 | FURNISHED EXCAVATION | CU YD | 635 | - | 635 |
| * 20700110 | POROUS GRANULAR EMBANKMENT | TON | 76 | 76 | - |
| * 25001000 | SEEDING, CLASS 2 (SPECIAL) | ACRE | 0.8 | - | 0.8 |
| 28000300 | TEMPORARY DITCH CHECKS | EACH | 4 | - | 4 |
| 28000500 | INLET AND PIPE PROTECTION | EACH | 2 | - | 2 |
| * 28100807 | STONE DUMPED RIPRAP, CLASS A4 | TON | 125 | 125 | - |
| * 40200800 | AGGREGATE SURFACE COURSE, TYPE B | TON | 727 | - | 727 |
| * 50100100 | REMOVAL OF EXISTING STRUCTURES | EACH | 1 | 1 | - |
| 50300225 | CONCRETE STRUCTURES | CU YD | 21.0 | 21.0 | - |
| 50300280 | CONCRETE ENCASEMENT | CU YD | 2.8 | 2.8 | - |
| 50400605 | PRECAST PRESTRESSED CONCRETE DECK BEAMS (33" DEPTH) | SQ FT | 1648 | 1648 | - |
| 50800105 | REINFORCEMENT BARS | POUND | 3420 | 3420 | - |
| Δ 50900205 | STEEL RAILING, TYPE S1 | FOOT | 140 | 140 | - |
| 51201600 | FURNISHING STEEL PILES HP12X53 | FOOT | 243 | 243 | - |
| 51202305 | DRIVING PILES | FOOT | 243 | 243 | - |
| 51203600 | TEST PILE STEEL HP12X53 | EACH | 1 | 1 | - |
| 51500100 | NAME PLATES | EACH | 1 | 1 | - |
| * 542C1069 | PIPE CULVERTS, CLASS C, TYPE 2 24" | FOOT | 100 | - | 100 |
| 67100100 | MOBILIZATION | L SUM | 1 | - | - |

* See Special Provisions.
Δ Specialty Items

GENERAL NOTES

- This section shall be constructed according to the plans, the Special Provisions, and the "Standard Specifications for Road and Bridge Construction", adopted January 1, 2007.
- Any reference to a Standard in these plans shall be interpreted to mean the edition as indicated by the sub-number listed in the Index of Sheets or the copy of the Standard included in these plans.
- Roadway Centerline profiles refer to the finished surface.
- Existing utilities shown are located from surface observations or information provided by the respective utilities and must be considered approximate. There may be others, the exact location of which are unknown and not shown. The Contractor will be responsible for notifying the respective utilities before work is begun. Field marking of underground utilities may be obtained by providing a minimum of 48 hours advance notice through the J.U.L.I.E. system by calling 1-800-892-0123, or by direct contact with non-members of J.U.L.I.E.
- The Aggregate Surface Course, Type B gradation shall be CA 6 or CA 10. Only Class C quality crushed stone will be approved for use on this project.
- The nominal thickness for surface course is shown on the Typical Sections, Standards, Schedules, or Special Details. The constructed thickness of the above item shall not be less than 90 percent of the nominal thickness at any location.
- Factors used for quantity calculations are as follows:
Porous Granular Embankment 2.1 tons/cu. yd.
Stone Dumped Riprap 130 pounds/cu. ft.
Aggregate Surface Course 2.1 tons/cu. yd.

UTILITIES

Telephone:
Frontier Communications
Phone: 217-854-3126

Electric:
Southwestern Electric Cooperative, Inc.
Greenville, IL
Phone: 618-664-1025

**SUMMARY OF QUANTITIES AND
TYPICAL SECTIONS
PROPOSED BRIDGE OVER
WOLF CREEK
TR 518
SECTION 08-08122-00-BR
FAYETTE COUNTY, ILLINOIS**