

NOTE:
1. 10' TRANSITION OF COMBINATION CURB AND GUTTER FROM M-4.18 TO B-6.24. STA: 48+78.49 AND 49+07.43, OFFSET 48.00 LT

MATCH LINE STA. 46+00.00

MATCH LINE STA. 51+50.00

NOTE:
ON PARCEL 08-09-200-014, THE RAILROAD TIES ALONG THE LENGTH OF THE DRIVEWAY PAVEMENT REMOVAL, SHALL BE REMOVED AND DISPOSED OF IN ACCORDANCE WITH ALL APPLICABLE POLICIES FOR HAZARDOUS WASTE MATERIALS. COST INCLUDED IN EARTH EXCAVATION AND NO ADDITIONAL PAYMENT WILL BE ALLOWED. CONTRACTOR TO PLACE 10 AGGREGATE PARKING SPACES. SEE STAGE 4 CONSTRUCTION PLANS. COST INCLUDED IN EARTH EXCAVATION.

FAU ROUTE	IDOT SECTION	COUNTY
9277	04-00031-00-PV	ST. CLAIR
FEDERAL AID PROJECT		
ILLINOIS		
IDOT JOB NO.	C-98-309-06	
IDOT CONTRACT NO.	97327	

THOUVENOT, WADE & MOERCHEN, INC.
ENGINEERS ♦ SURVEYORS ♦ PLANNERS

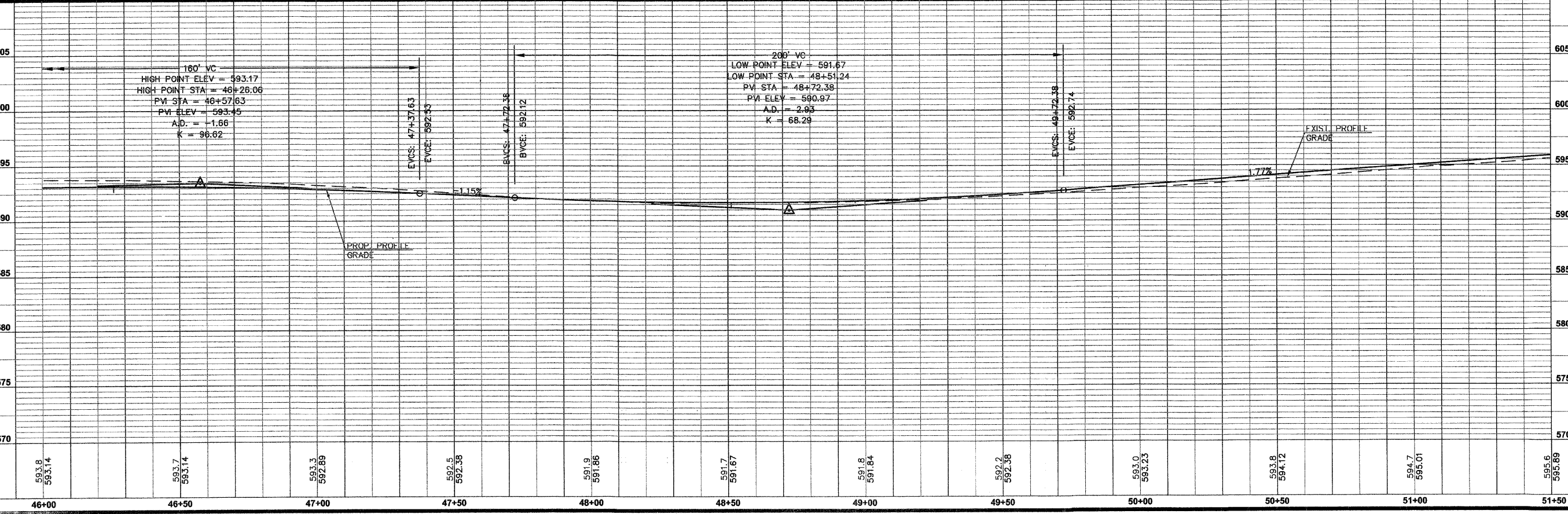


- CORPORATE OFFICE**
4940 OLD COLLINSVILLE RD.
SWANSEA, ILLINOIS 62226
TEL (618) 624-4488
FAX (618) 624-6688
corp@twm-inc.com
- EDWARDSVILLE OFFICE**
1015B CENTURY DRIVE
EDWARDSVILLE, ILLINOIS 62025
TEL (618) 656-4040
FAX (618) 656-4343
edwardsville@twm-inc.com
- ST. LOUIS OFFICE**
1001 CRAIG ROAD, SUITE 260
ST. LOUIS, MISSOURI 63146
TEL (314) 236-5052
FAX (314) 872-2194
stlouis@twm-inc.com
- WATERLOO OFFICE**
113 SOUTH MAIN STREET
WATERLOO, ILLINOIS 62298
TEL (618) 939-5050
FAX (618) 939-3938
waterloo@twm-inc.com

PROFESSIONAL REGISTRATIONS	LICENSE NO.
ILLINOIS PROFESSIONAL DESIGN FIRM	184-001220
PROFESSIONAL ENGINEERING CORP.	62-035370
PROFESSIONAL STRUCTURAL ENGR. CORP.	81-005202
ILLINOIS PROF. LAND SURVEYING CORP.	048-000029
MISSOURI PROFESSIONAL ENGR. CORP.	NC 001528
MISSOURI LAND SURVEYING CORP.	NC 000346

Signature: _____
Signature Date: _____
Expiration Date: _____

STATEMENT OF RESPONSIBILITY
I hereby confirm that the document herein to be substantiated by my seal is restricted to this sheet, and I hereby disclaim any responsibility for all other drawings, specifications, estimates, reports or other documents or instruments relating to or intended to be utilized for any other part of the architectural, engineering or survey project.



ROADWAY PLAN AND PROFILE
HUNTWOOD ROAD
STA. 46+00.00 TO STA. 51+50.00

PROJECT
HUNTWOOD ROAD RECONSTRUCTION
VILLAGE OF SWANSEA
ST. CLAIR COUNTY

REV.	DATE	DESCRIPTION
△		
△		
△		

DRAWN BY:	MLS	SHEET
DESIGNED BY:	MLS	18
CHECKED BY:	SJK	OF 104 SHEETS
APPROVED BY:	SJK	PROJECT DESCRIPTION
PROJECT NUMBER:	T20-030356	Huntwood Road Reconstruction
<input checked="" type="checkbox"/> ISSUED FOR REVIEW	<input type="checkbox"/> ISSUED FOR BIDDING	
<input type="checkbox"/> ISSUED FOR CONSTR.	<input type="checkbox"/> RECORD DRAWING	