


FAU ROUTE	IDOT SECTION	COUNTY
9277	04-00031-00-PV	ST. CLAIR
FEDERAL AID PROJECT		ILLINOIS
IDOT JOB NO.	C-98-309-06	
IDOT CONTRACT NO.	97327	

**THOUVENOT, WADE & MOERCHEN, INC.**  
 ENGINEERS ♦ SURVEYORS ♦ PLANNERS



- CORPORATE OFFICE**  
 4940 OLD COLLINSVILLE RD.  
 SWANSEA, ILLINOIS 62226  
 TEL (618) 624-4488  
 FAX (618) 624-6688  
 corp@twm-inc.com
- EDWARDSVILLE OFFICE**  
 1015B CENTURY DRIVE  
 EDWARDSVILLE, ILLINOIS 62025  
 TEL (618) 656-4040  
 FAX (618) 656-4343  
 edwardsville@twm-inc.com
- ST. LOUIS OFFICE**  
 1001 CRAIG ROAD, SUITE 260  
 ST. LOUIS, MISSOURI 63146  
 TEL (314) 236-5052  
 FAX (314) 872-2194  
 stlouis@twm-inc.com
- WATERLOO OFFICE**  
 113 SOUTH MAIN STREET  
 WATERLOO, ILLINOIS 62298  
 TEL (618) 939-5050  
 FAX (618) 939-3938  
 waterloo@twm-inc.com

PROFESSIONAL REGISTRATIONS	LICENSE NO.
ILLINOIS PROFESSIONAL DESIGN FIRM	184-001220
PROFESSIONAL ENGINEERING CORP.	62-03570
PROFESSIONAL STRUCTURAL ENGR. CORP.	61-005202
ILLINOIS PROF. LAND SURVEYING CORP.	048-000029
MISSOURI PROFESSIONAL ENGR. CORP.	NC 001528
MISSOURI LAND SURVEYING CORP.	NC 000346

Signature: \_\_\_\_\_  
 Signature Date: \_\_\_\_\_  
 Expiration Date: \_\_\_\_\_

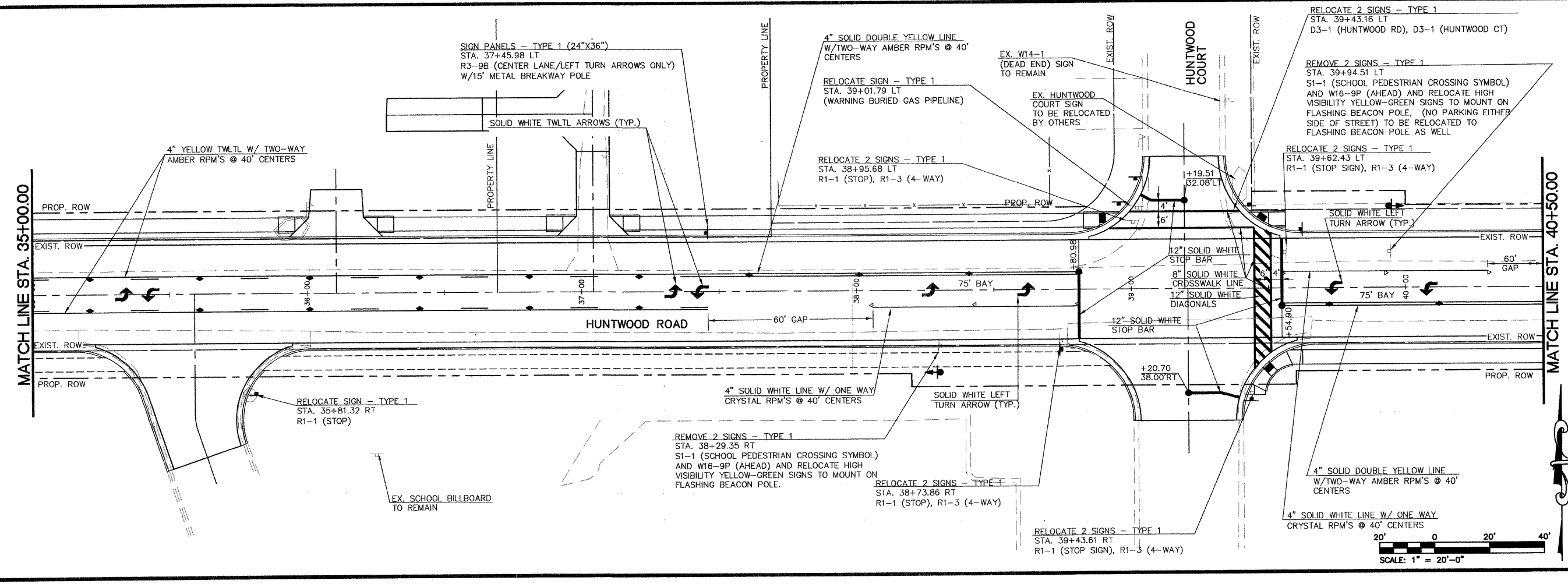
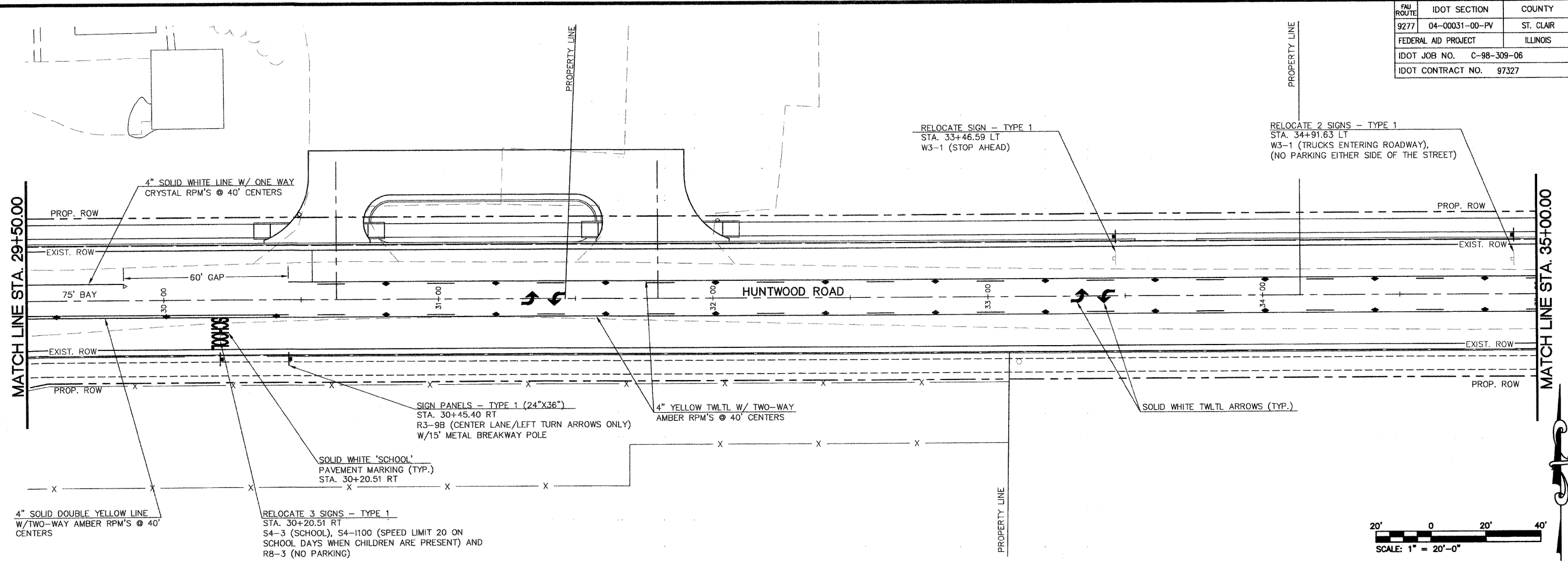
**STATEMENT OF RESPONSIBILITY**  
 I hereby confirm that the document herein to be authorized by my seal is restricted to this sheet, and I hereby disclaim any responsibility for all other drawings, specifications, estimates, reports or other documents or instruments relating to or intended to be utilized for any other part of the architectural, engineering or survey project.

**TITLE**  
 PAVEMENT MARKING AND SIGNAGE  
 STA. 29+00.00 TO STA. 40+50.00

**PROJECT:**  
 HUNTWOOD ROAD RECONSTRUCTION  
 VILLAGE OF SWANSEA  
 ST. CLAIR COUNTY

REV.	DATE	DESCRIPTION

DRAWN BY:	MLS	SHEET
DESIGNED BY:	MLS	<b>52</b>
CHECKED BY:	SJK	OF 104 SHEETS
APPROVED BY:	SJK	PROJECT DESCRIPTION
PROJECT NUMBER:	20-030356	Huntwood Road Reconstruction
<input checked="" type="checkbox"/> ISSUED FOR REVIEW	<input type="checkbox"/> ISSUED FOR BIDDING	
<input type="checkbox"/> ISSUED FOR CONSTR.	<input type="checkbox"/> RECORD DRAWING	



P:\030356.dwg (Roadway Plans)\ROADWAY PLANS\030356 P\TRK.dwg 9/22/2008 5:40:20 PM CDT