

EDDY RODGERS JR. ETAL  
PARCEL 09-09-100-011  
BK. 2643/Pg. 48

PROP. CURVE ALT-5  
PI STA. = 38+09.20  
 $\Delta = 118^\circ 01' 58''$  (LT)  
D =  $19^\circ 04' 39''$   
R = 300.33'  
T = 500.16'  
L = 618.70'  
E = 283.07'  
e = NC  
T.R. = N/A  
S.E. RUN = N/A  
P.C. STA = 33+09.05  
P.T. STA = 39+27.75

**END PHASE V  
BEGIN PHASE IV OMISSION  
STA 35+00.00**

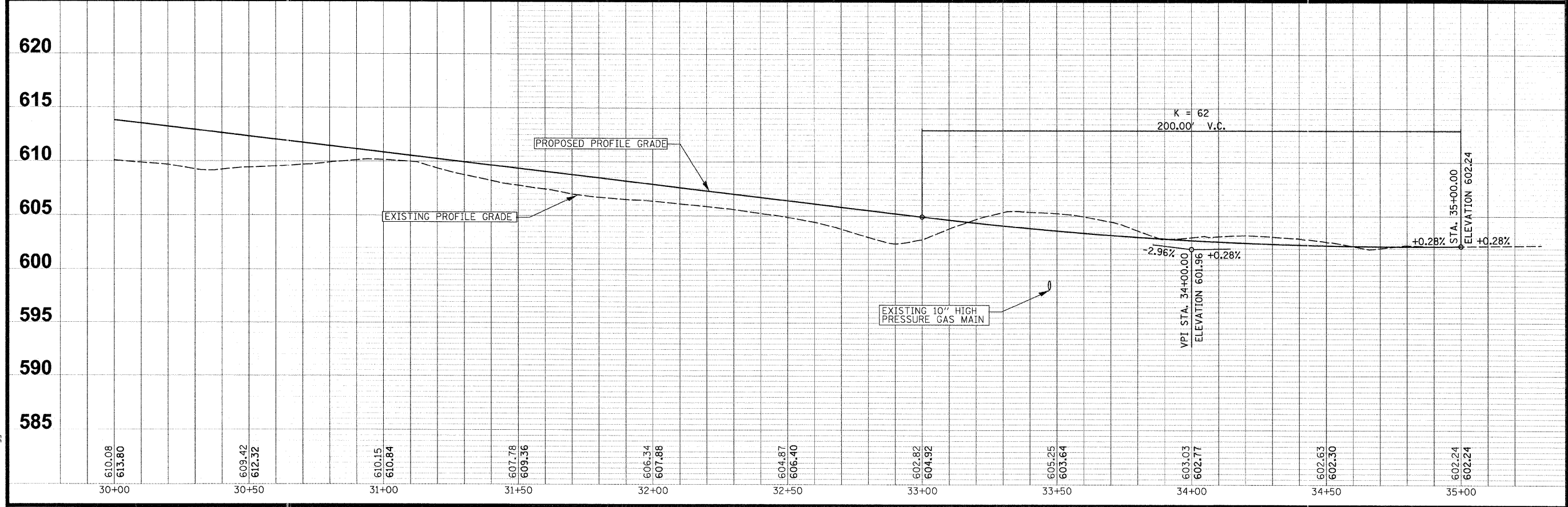
FAU ROUTE	IDOT SECTION	COUNTY
9177	*	ST. CLAIR
IDOT JOB NO. C-98-309-09		
IDOT CONTRACT NO. 97362		
* 05-00007-03-PV; 06-00007-05-PV		

**THOUVENOT,  
WADE &  
MOERCHEN, INC.**  
ENGINEERS ♦ SURVEYORS ♦ PLANNERS



- CORPORATE OFFICE**  
 4940 OLD COLLINSVILLE RD.  
 SWANSEA, ILLINOIS 62226  
 TEL (618) 624-4488  
 FAX (618) 624-6688  
 corp@twm-inc.com
- CARBONDALE OFFICE**  
 206 WEST COLLEGE ST., SUITE 2  
 CARBONDALE, ILLINOIS 62901  
 TEL (618) 549-8844  
 FAX (618) 549-8450  
 info@twm-inc.com
- EDWARDSVILLE OFFICE**  
 1015B CENTURY DRIVE  
 EDWARDSVILLE, ILLINOIS 62025  
 TEL (618) 656-4040  
 FAX (618) 656-4343  
 info@twm-inc.com
- ST. CHARLES OFFICE**  
 400 NORTH 5th ST., SUITE 101  
 ST. CHARLES, MISSOURI 63301  
 TEL (636) 724-8300  
 FAX (636) 724-8304  
 info@twm-inc.com
- WATERLOO OFFICE**  
 113 SOUTH MAIN STREET  
 WATERLOO, ILLINOIS 62298  
 TEL (618) 939-5050  
 FAX (618) 939-3938  
 info@twm-inc.com

PROFESSIONAL REGISTRATIONS	LICENSE NO.
ILLINOIS PROFESSIONAL DESIGN FIRM	184-001220
PROFESSIONAL ENGINEERING CORP.	62-035370
PROFESSIONAL STRUCTURAL ENGR. CORP.	31-005202
ILLINOIS PROF. LAND SURVEYING CORP.	048-000029
MISSOURI PROFESSIONAL ENGR. CORP.	NC 001528
MISSOURI LAND SURVEYING CORP.	NC 000346



**TITLE:** ROADWAY PLAN AND PROFILE  
STA 30+00.00 TO 35+00.00

**PROJECT:** SEIBERT ROAD  
RECONSTRUCTION - PHASE V  
VILLAGE OF SHILOH  
ST. CLAIR COUNTY, ILLINOIS

REV.	DATE	DESCRIPTION
1		
2		
3		

DRAWN BY: JWS	SHEET
DESIGNED BY: JWS	<b>13</b>
CHECKED BY: SJK	OF 79 SHEETS
APPROVED BY: SJK	PROJECT DESCRIPTION
PROJECT NUMBER: 20-010479	SEIBERT ROAD RECONSTRUCTION
<input checked="" type="checkbox"/> ISSUED FOR REVIEW	<input type="checkbox"/> ISSUED FOR BIDDING
<input type="checkbox"/> ISSUED FOR CONSTR.	<input type="checkbox"/> RECORD DRAWING

PLOT DATE = 2/19/2009  
FILE NAME = F:\010479B.dgn\IDOT PHASE V - TWM PHASE III\phaseIII\010479B-PPROAD.PH3.dgn  
PLOT SCALE = 28.0000' / 1" IN.  
USER NAME = db99p