

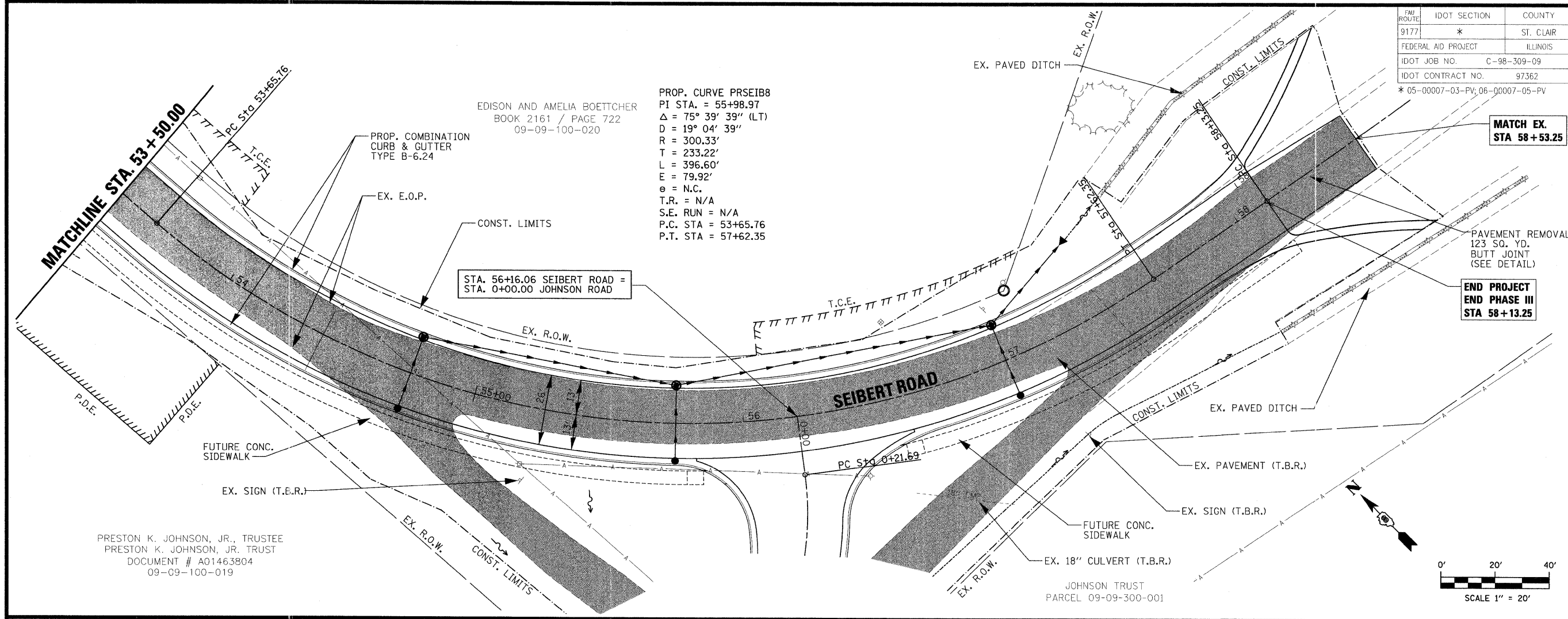
FED. ROUTE	IDOT SECTION	COUNTY
9177	*	ST. CLAIR
FEDERAL AID PROJECT	ILLINOIS	
IDOT JOB NO.	C-98-309-09	
IDOT CONTRACT NO.	97362	
* 05-00007-03-PV; 06-00007-05-PV		

THOUVENOT, WADE & MOERCHEN, INC.
ENGINEERS • SURVEYORS • PLANNERS

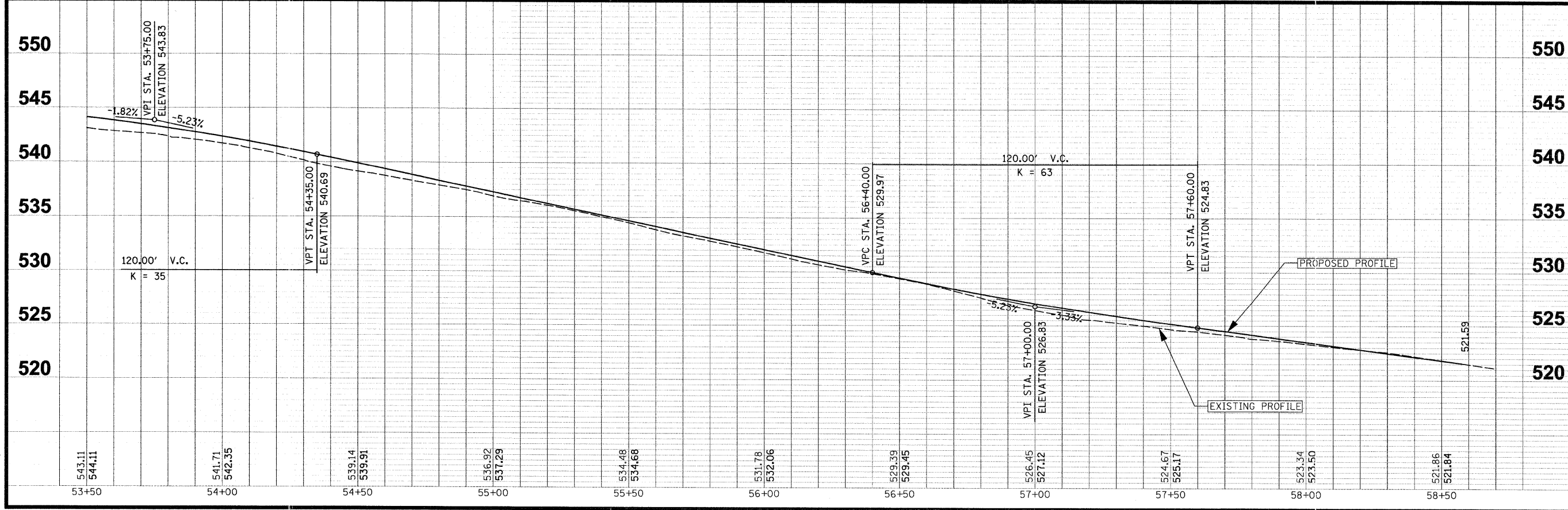


- CORPORATE OFFICE**
4940 OLD COLLINSVILLE RD.
SWANSEA, ILLINOIS 62226
TEL (618) 624-4488
FAX (618) 624-6688
corp@twm-inc.com
- CARBONDALE OFFICE**
206 WEST COLLEGE ST., SUITE 2
CARBONDALE, ILLINOIS 62901
TEL (618) 549-8844
FAX (618) 549-8450
info@twm-inc.com
- EDWARDSVILLE OFFICE**
1015B CENTURY DRIVE
EDWARDSVILLE, ILLINOIS 62025
TEL (618) 656-4040
FAX (618) 656-4343
info@twm-inc.com
- ST. CHARLES OFFICE**
400 NORTH 5th ST., SUITE 101
ST. CHARLES, MISSOURI 63301
TEL (636) 724-8300
FAX (636) 724-8304
info@twm-inc.com
- WATERLOO OFFICE**
113 SOUTH MAIN STREET
WATERLOO, ILLINOIS 62298
TEL (618) 939-5050
FAX (618) 939-3938
info@twm-inc.com

PROFESSIONAL REGISTRATIONS	LICENSE NO.
ILLINOIS PROFESSIONAL DESIGN FIRM	184-001220
PROFESSIONAL ENGINEERING CORP.	82-035370
PROFESSIONAL STRUCTURAL ENGR. CORP.	81-005202
ILLINOIS PROF. LAND SURVEYING CORP.	048-000029
MISSOURI PROFESSIONAL ENGR. CORP.	NC 001528
MISSOURI LAND SURVEYING CORP.	NC 000346



PRESTON K. JOHNSON, JR., TRUSTEE
 PRESTON K. JOHNSON, JR. TRUST
 DOCUMENT # A01463804
 09-09-100-019



ROADWAY PLAN AND PROFILE
 STA 53+50.00 TO 58+42.79

PROJECT: SEIBERT ROAD RECONSTRUCTION - PHASE III VILLAGE OF SHILOH ST. CLAIR COUNTY, ILLINOIS

REV	DATE	DESCRIPTION

DRAWN BY: JWS	SHEET 16
DESIGNED BY: JWS	OF 79 SHEETS
CHECKED BY: AJE	PROJECT DESCRIPTION: SEIBERT ROAD RECONSTRUCTION
APPROVED BY: SJK	PROJECT NUMBER: 20-010479
<input checked="" type="checkbox"/> ISSUED FOR REVIEW	<input type="checkbox"/> ISSUED FOR BIDDING
<input type="checkbox"/> ISSUED FOR CONSTR.	<input type="checkbox"/> RECORD DRAWING

PLOT DATE = 2/19/2009
 FILE NAME = F:\014798\dgn\IDOT PHASE III - TWM PHASE V\phase \010479_PPRD.plt5.dgn
 PLOT SCALE = 20.0000 / 1 IN.
 USER NAME = jws