

FAU ROUTE	IDOT SECTION	COUNTY
9177	*	ST. CLAIR
FEDERAL AID PROJECT	ILLINOIS	
IDOT JOB NO.	C-98-309-09	
IDOT CONTRACT NO.	97362	
* 05-00007-03-PV; 06-00007-05-PV		

THOUVENOT, WADE & MOERCHEN, INC.
ENGINEERS ♦ SURVEYORS ♦ PLANNERS



- ✗ **CORPORATE OFFICE**
4940 OLD COLLINSVILLE RD.
SWANSEA, ILLINOIS 62226
TEL (618) 624-4488
FAX (618) 624-6688
corp@twm-inc.com
- **CARBONDALE OFFICE**
206 WEST COLLEGE ST., SUITE 2
CARBONDALE, ILLINOIS 62901
TEL (618) 549-8844
FAX (618) 549-8450
info@twm-inc.com
- **EDWARDSVILLE OFFICE**
1015B CENTURY DRIVE
EDWARDSVILLE, ILLINOIS 62025
TEL (618) 656-4040
FAX (618) 656-4343
info@twm-inc.com
- **ST. CHARLES OFFICE**
400 NORTH 5th ST., SUITE 101
ST. CHARLES, MISSOURI 63301
TEL (636) 724-8300
FAX (636) 724-8304
info@twm-inc.com
- **WATERLOO OFFICE**
113 SOUTH MAIN STREET
WATERLOO, ILLINOIS 62298
TEL (618) 939-5050
FAX (618) 939-3938
info@twm-inc.com

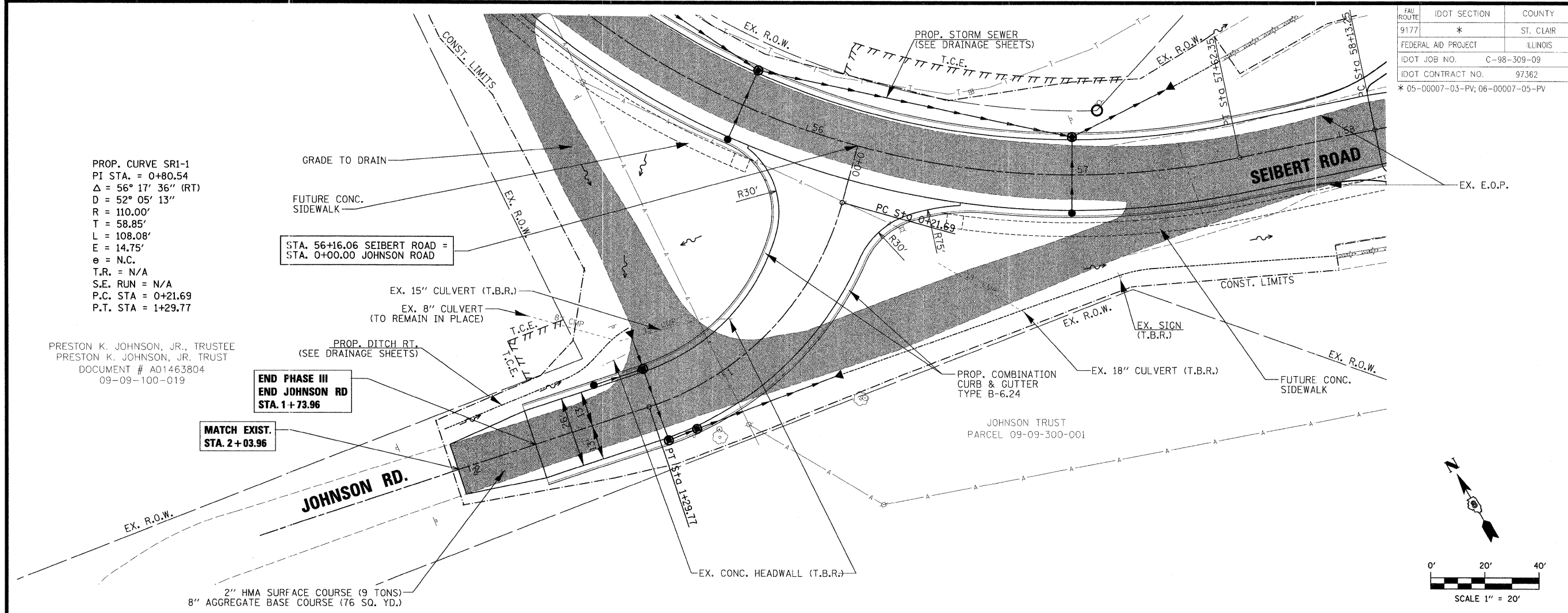
PROFESSIONAL REGISTRATIONS	LICENSE NO.
ILLINOIS PROFESSIONAL DESIGN FIRM	184-001220
PROFESSIONAL ENGINEERING CORP.	82-035370
PROFESSIONAL STRUCTURAL ENGR. CORP.	81-005202
ILLINOIS PROF. LAND SURVEYING CORP.	048-000029
MISSOURI PROFESSIONAL ENGR. CORP.	NC 001528
MISSOURI LAND SURVEYING CORP.	NC 000346

TITLE: ROADWAY PLAN AND PROFILE
JOHNSON RD.
STA 0+00.00 TO 2+03.96

PROJECT: SEIBERT ROAD
RECONSTRUCTION - PHASE III
VILLAGE OF SHILOH
ST. CLAIR COUNTY, ILLINOIS

REV.	DATE	DESCRIPTION
▲		
▲		
▲		

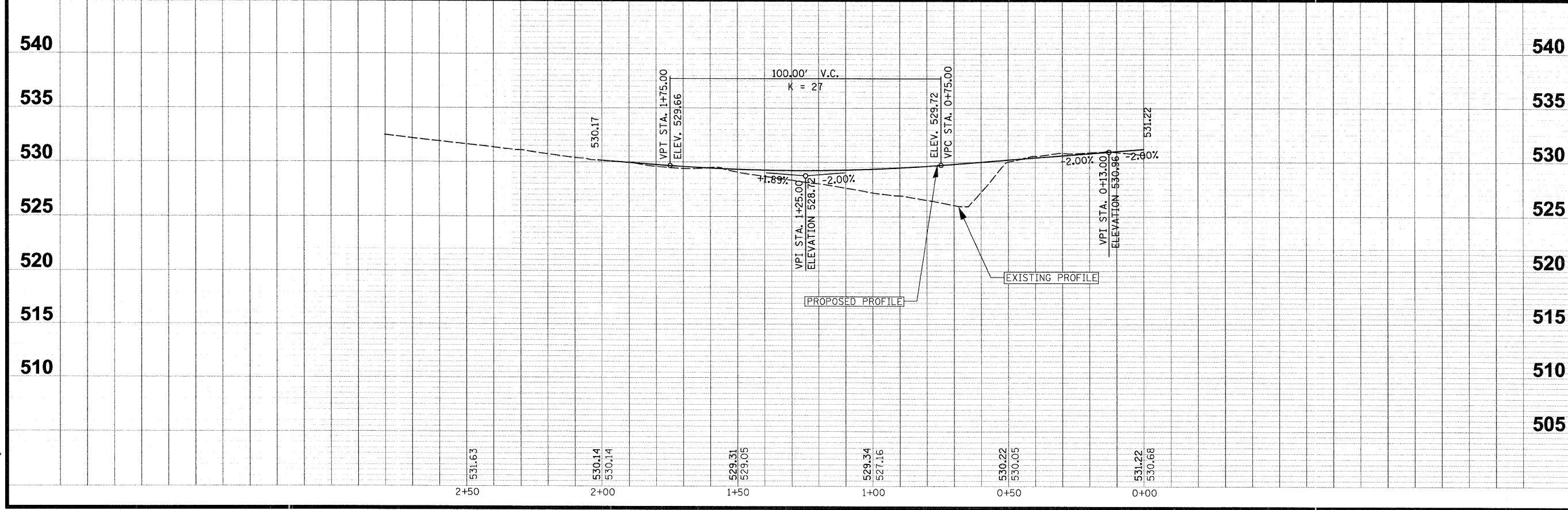
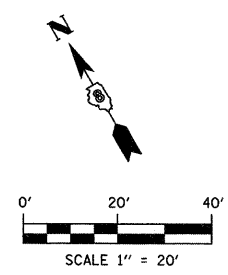
DRAWN BY: JWS	SHEET
DESIGNED BY: JWS	17
CHECKED BY: AJE	OF 79 SHEETS
APPROVED BY: SJK	PROJECT DESCRIPTION
PROJECT NUMBER: 20-010479	SEIBERT ROAD RECONSTRUCTION
<input checked="" type="checkbox"/> ISSUED FOR REVIEW	<input type="checkbox"/> ISSUED FOR BIDDING
<input type="checkbox"/> ISSUED FOR CONSTR.	<input type="checkbox"/> RECORD DRAWING



PROP. CURVE SR1-1
PI STA. = 0+80.54
 $\Delta = 56^\circ 17' 36''$ (RT)
D = $52^\circ 05' 13''$
R = 110.00'
T = 58.85'
L = 108.08'
E = 14.75'
e = N.C.
T.R. = N/A
S.E. RUN = N/A
P.C. STA = 0+21.69
P.T. STA = 1+29.77

PRESTON K. JOHNSON, JR., TRUSTEE
PRESTON K. JOHNSON, JR. TRUST
DOCUMENT # A01463804
09-09-100-019

2" HMA SURFACE COURSE (9 TONS)
8" AGGREGATE BASE COURSE (76 SQ. YD.)



PLOT DATE = 2/19/2009
 FILE NAME = F:\010479\09\DOT PHASE III - TWM PHASE V\phase \1010479_PPRD.ph5.dgn
 PLOT SCALE = 20.00000 ' / IN.
 USER NAME = jstern