

FAU ROUTE	IDOT SECTION	COUNTY
9177	*	ST. CLAIR
IDOT JOB NO. C-98-309-09		
IDOT CONTRACT NO. 97362		
* 05-00007-03-PV; 06-00007-05-PV		

THOUVENOT, WADE & MOERCHEN, INC.
ENGINEERS • SURVEYORS • PLANNERS



- CORPORATE OFFICE**
4940 OLD COLLINSVILLE RD.
SWANSEA, ILLINOIS 62226
TEL (618) 624-4488
FAX (618) 624-6688
corp@twm-inc.com
- CARBONDALE OFFICE**
206 WEST COLLEGE ST., SUITE 2
CARBONDALE, ILLINOIS 62901
TEL (618) 549-8844
FAX (618) 549-8450
info@twm-inc.com
- EDWARDSVILLE OFFICE**
1015B CENTURY DRIVE
EDWARDSVILLE, ILLINOIS 62025
TEL (618) 656-4040
FAX (618) 656-4343
info@twm-inc.com
- ST. CHARLES OFFICE**
400 NORTH 5th ST., SUITE 101
ST. CHARLES, MISSOURI 63301
TEL (636) 724-8300
FAX (636) 724-8304
info@twm-inc.com
- WATERLOO OFFICE**
113 SOUTH MAIN STREET
WATERLOO, ILLINOIS 62298
TEL (618) 939-5050
FAX (618) 939-3938
info@twm-inc.com

PROFESSIONAL REGISTRATIONS	LICENSE NO.
ILLINOIS PROFESSIONAL DESIGN FIRM	184-001220
PROFESSIONAL ENGINEERING CORP.	62-035370
PROFESSIONAL STRUCTURAL ENGR. CORP.	81-005202
ILLINOIS PROF. LAND SURVEYING CORP.	048-000029
MISSOURI PROFESSIONAL ENGR. CORP.	NC 001528
MISSOURI LAND SURVEYING CORP.	NC 000346

TITLE
EXISTING SEIBERT ROAD GRADING PLAN
STA. 29+50 TO STA. 33+00

PROJECT:
SEIBERT ROAD RECONSTRUCTION - PHASE V
VILLAGE OF SHILOH
ST. CLAIR COUNTY, ILLINOIS

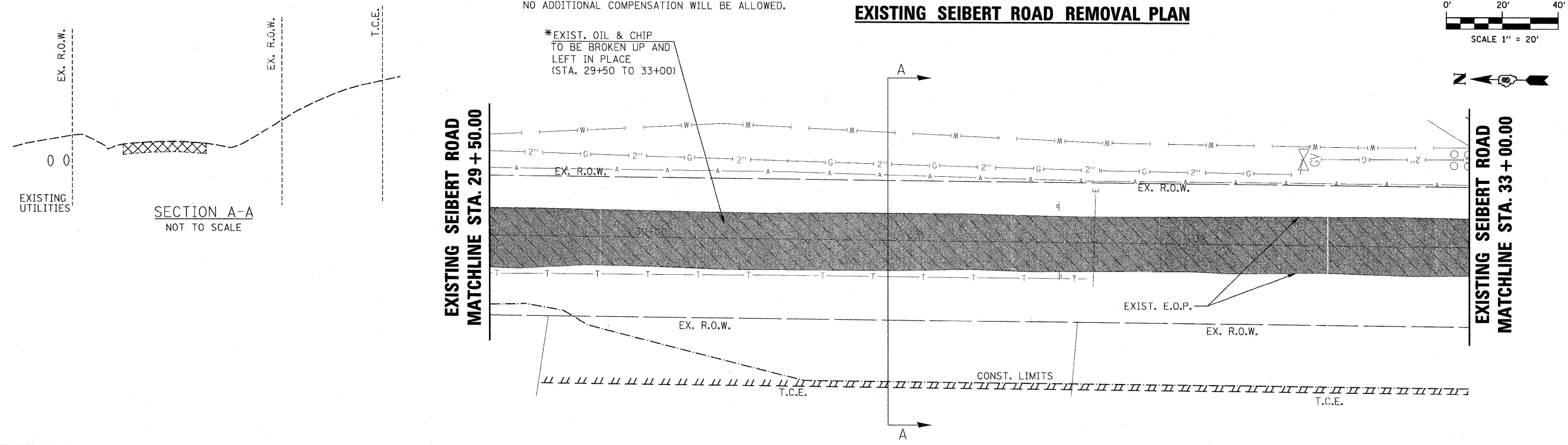
REV.	DATE	DESCRIPTION
△		
△		
△		

DRAWN BY: JWS	SHEET
DESIGNED BY: JWS	18
CHECKED BY: SJK	OF 79 SHEETS
APPROVED BY: SJK	PROJECT DESCRIPTION
PROJECT NUMBER: 120-010479	SEIBERT ROAD RECONSTRUCTION
<input checked="" type="checkbox"/> ISSUED FOR REVIEW	<input type="checkbox"/> ISSUED FOR BIDDING
<input type="checkbox"/> ISSUED FOR CONSTR.	<input type="checkbox"/> RECORD DRAWING

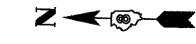
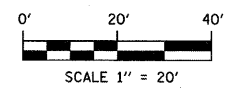
EXISTING SEIBERT ROAD REMOVAL PLAN

* COST INCLUDED IN COST OF EARTHWORK, NO ADDITIONAL COMPENSATION WILL BE ALLOWED.

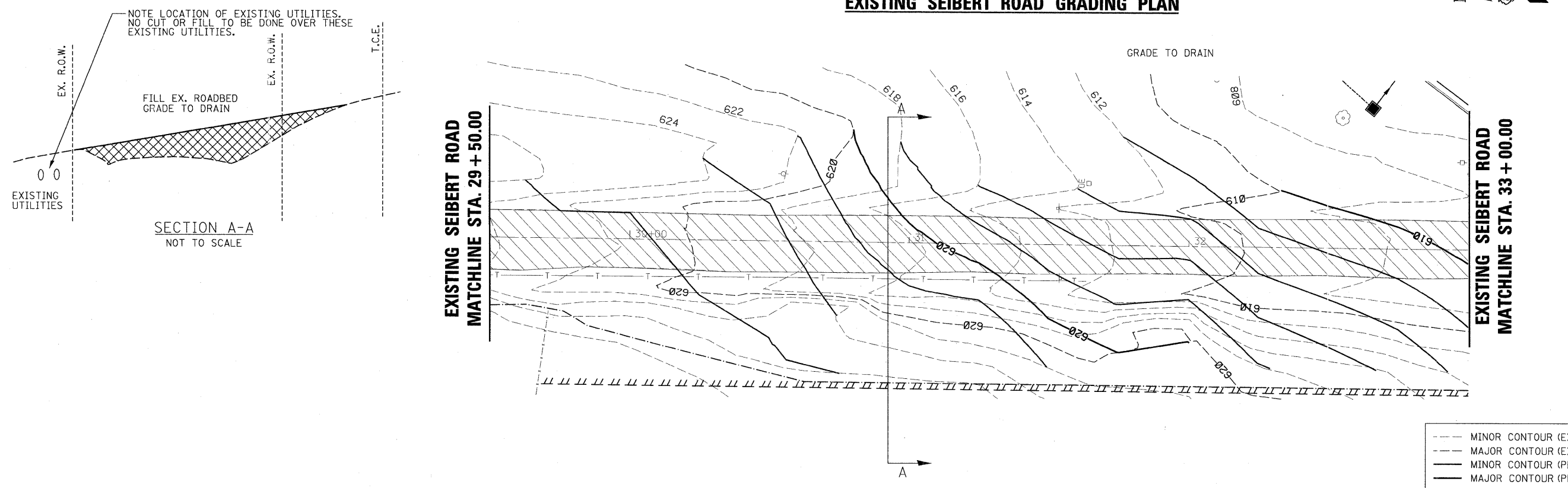
*EXIST. OIL & CHIP TO BE BROKEN UP AND LEFT IN PLACE (STA. 29+50 TO 33+00)



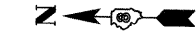
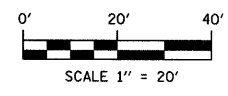
SECTION A-A
NOT TO SCALE



EXISTING SEIBERT ROAD GRADING PLAN



SECTION A-A
NOT TO SCALE



- MINOR CONTOUR (EX)
- MAJOR CONTOUR (EX)
- MINOR CONTOUR (PR)
- MAJOR CONTOUR (PR)

PLOT DATE = 2/19/2009
 FILE NAME = P:\010479\98\dgn\IDOT PHASE V - TWM PHASE III\Phase III\0479B-PPROAD_P18.dgn
 PLOT SCALE = 20.00000 / 1 IN.
 USER NAME = dbj98