

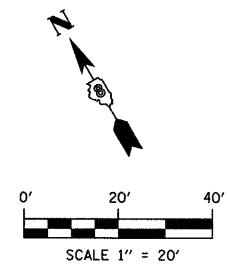
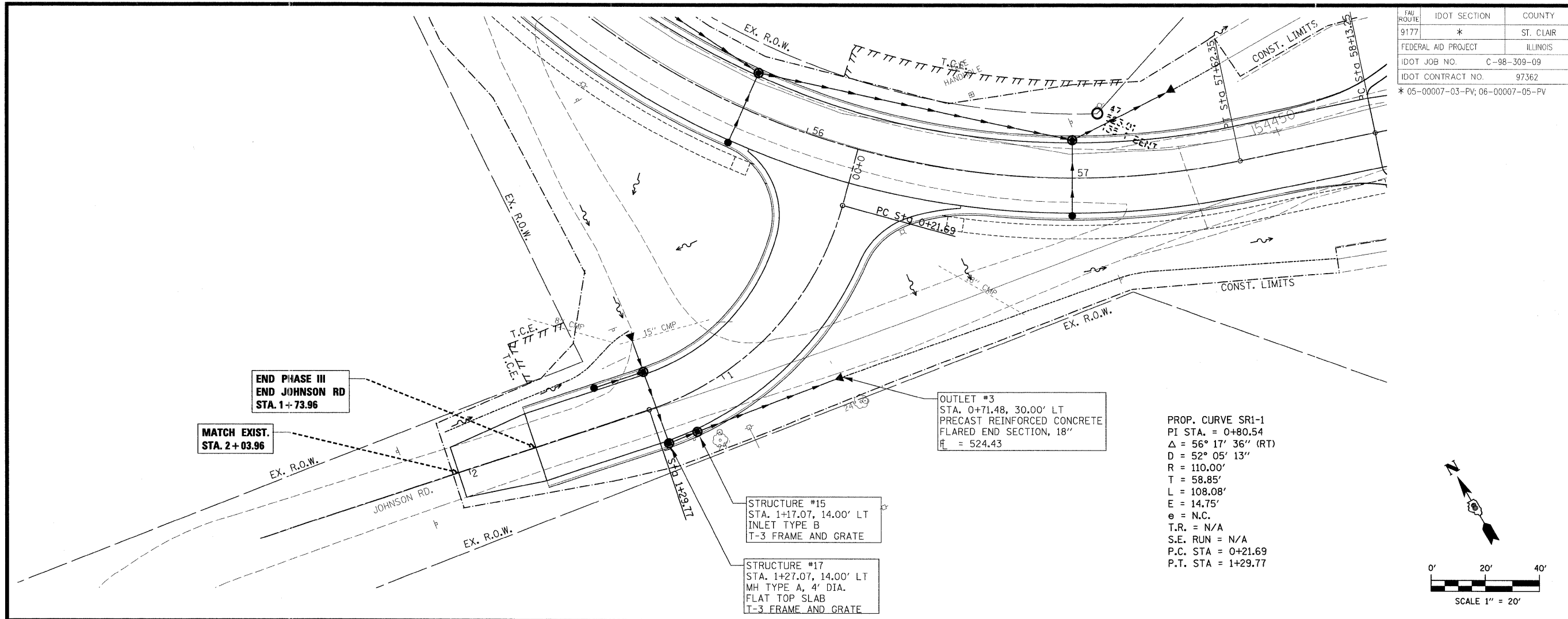
FAU ROUTE 9177
 IDOT SECTION *
 COUNTY ST. CLAIR
 FEDERAL AID PROJECT ILLINOIS
 IDOT JOB NO. C-98-309-09
 IDOT CONTRACT NO. 97362
 * 05-00007-03-PV; 06-00007-05-PV

THOUVENOT, WADE & MOERCHEN, INC.
 ENGINEERS • SURVEYORS • PLANNERS

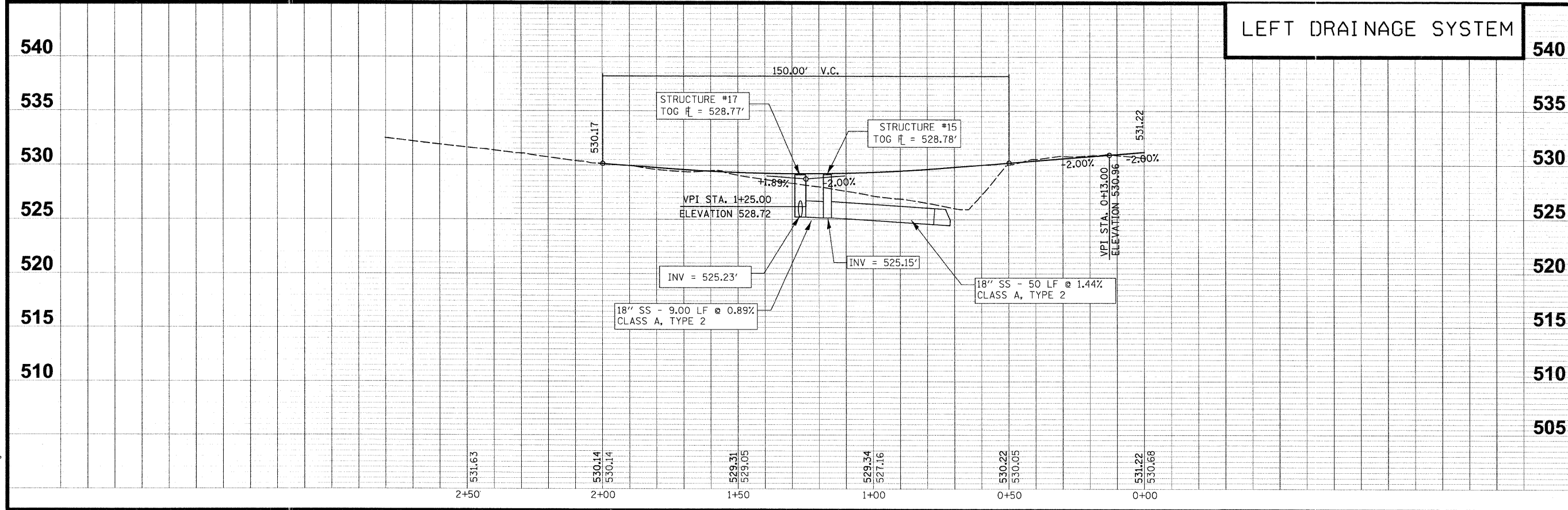


- CORPORATE OFFICE**
 4940 OLD COLLINSVILLE RD.
 SWANSEA, ILLINOIS 62226
 TEL (618) 624-4488
 FAX (618) 624-6688
 corp@twm-inc.com
- CARBONDALE OFFICE**
 206 WEST COLLEGE ST., SUITE 2
 CARBONDALE, ILLINOIS 62901
 TEL (618) 549-8844
 FAX (618) 549-8450
 info@twm-inc.com
- EDWARDSVILLE OFFICE**
 1015B CENTURY DRIVE
 EDWARDSVILLE, ILLINOIS 62025
 TEL (618) 656-4040
 FAX (618) 656-4343
 info@twm-inc.com
- ST. CHARLES OFFICE**
 400 NORTH 5th ST., SUITE 101
 ST. CHARLES, MISSOURI 63301
 TEL (636) 724-8300
 FAX (636) 724-8304
 info@twm-inc.com
- WATERLOO OFFICE**
 113 SOUTH MAIN STREET
 WATERLOO, ILLINOIS 62298
 TEL (618) 939-6050
 FAX (618) 939-3938
 info@twm-inc.com

PROFESSIONAL REGISTRATIONS
 ILLINOIS PROFESSIONAL DESIGN FIRM 184-001220
 ILLINOIS PROFESSIONAL ENGINEERING CORP. 02-035370
 ILLINOIS PROFESSIONAL STRUCTURAL ENGR. CORP. 81-005202
 ILLINOIS PROF. LAND SURVEYING CORP. 048-000029
 MISSOURI PROFESSIONAL ENGR. CORP. MO 001528
 MISSOURI LAND SURVEYING CORP. MO 000346



LEFT DRAINAGE SYSTEM



TITLE
 DRAINAGE PLAN AND PROFILE
 JOHNSON ROAD

PROJECT:
 SEIBERT ROAD
 RECONSTRUCTION - PHASE III
 VILLAGE OF SHILOH
 ST. CLAIR COUNTY, ILLINOIS

REV.	DATE	DESCRIPTION
△		
△		
△		

DRAWN BY: JWS
DESIGNED BY: JWS
CHECKED BY: AJE
APPROVED BY: SJK

SHEET
29
 OF 79 SHEETS

PROJECT DESCRIPTION
 SEIBERT ROAD
 RECONSTRUCTION

ISSUED FOR REVIEW
 ISSUED FOR BIDDING
 ISSUED FOR CONSTR.
 RECORD DRAWING

PLOT DATE = 2/19/2009
 FILE NAME = F:\10124738\dwg\DOT PHASE III - TWM PHASE V\phase v\010473\PPDRAINAGE.plt5.dgn
 PLOT SCALE = 20.00000 / IN.
 USER NAME = jswan