

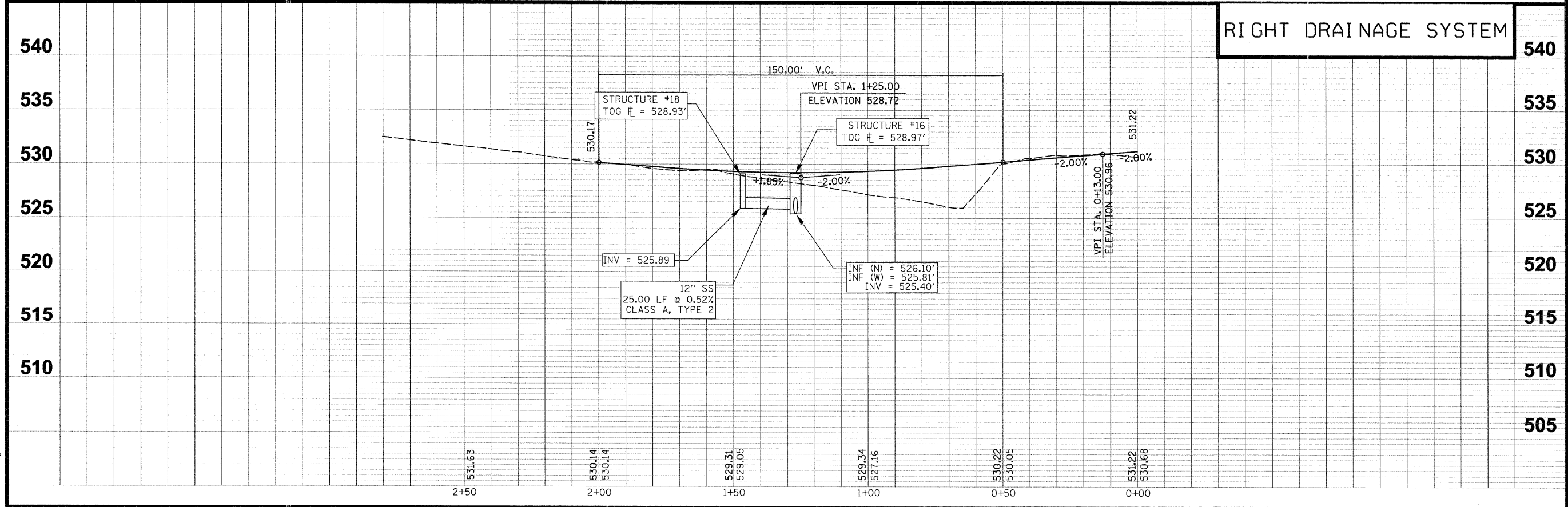
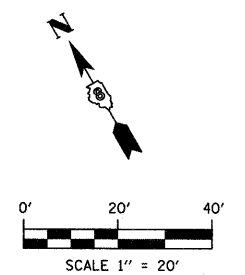
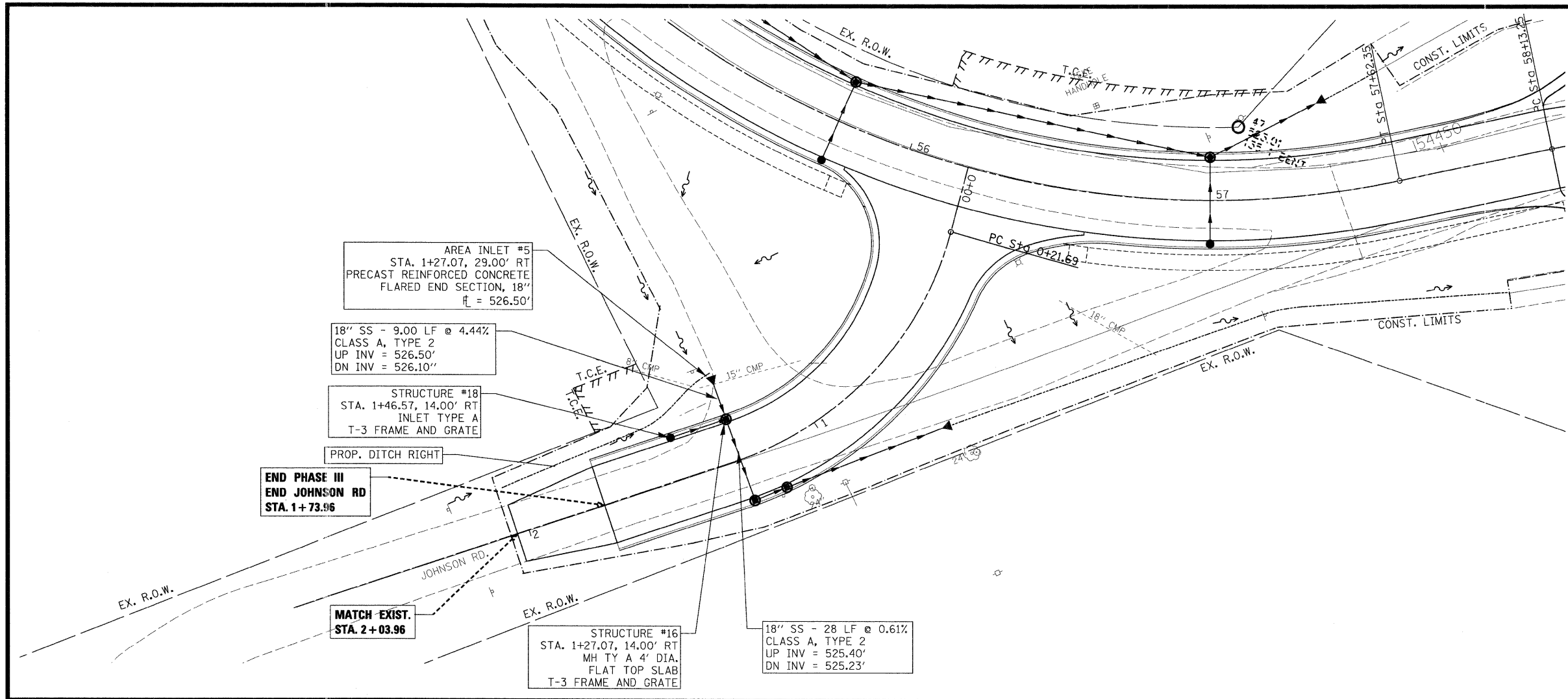
FAU ROUTE	IDOT SECTION	COUNTY
9177	*	ST. CLAIR
FEDERAL AID PROJECT	ILLINOIS	
IDOT JOB NO.	C-98-309-09	
IDOT CONTRACT NO.	97362	
* 05-00007-03-PW; 06-00007-05-PV		

**THOUVENOT, WADE & MOERCHEN, INC.**  
ENGINEERS • SURVEYORS • PLANNERS



- CORPORATE OFFICE**  
4940 OLD COLLINSVILLE RD.  
SWANSEA, ILLINOIS 62226  
TEL (618) 624-4488  
FAX (618) 624-6688  
corp@twm-inc.com
- CARBONDALE OFFICE**  
206 WEST COLLEGE ST., SUITE 2  
CARBONDALE, ILLINOIS 62901  
TEL (618) 549-8844  
FAX (618) 549-8450  
info@twm-inc.com
- EDWARDSVILLE OFFICE**  
1015B CENTURY DRIVE  
EDWARDSVILLE, ILLINOIS 62025  
TEL (618) 656-4040  
FAX (618) 656-4343  
info@twm-inc.com
- ST. CHARLES OFFICE**  
400 NORTH 5th ST., SUITE 101  
ST. CHARLES, MISSOURI 63301  
TEL (636) 724-8300  
FAX (636) 724-8304  
info@twm-inc.com
- WATERLOO OFFICE**  
113 SOUTH MAIN STREET  
WATERLOO, ILLINOIS 62298  
TEL (618) 939-5050  
FAX (618) 939-3938  
info@twm-inc.com

PROFESSIONAL REGISTRATIONS	LICENSE NO.
ILLINOIS PROFESSIONAL DESIGN FIRM	184-001220
PROFESSIONAL ENGINEERING CORP.	62-035370
PROFESSIONAL STRUCTURAL ENGR. CORP.	81-005202
ILLINOIS PROF. LAND SURVEYING CORP.	048-000029
MISSOURI PROFESSIONAL ENGR. CORP.	NC 001528
MISSOURI LAND SURVEYING CORP.	NC 000346



**TITLE**  
DRAINAGE PLAN AND PROFILE  
JOHNSON ROAD

**PROJECT**  
SEIBERT ROAD  
RECONSTRUCTION - PHASE III  
VILLAGE OF SHILOH  
ST. CLAIR COUNTY, ILLINOIS

REV.	DATE	DESCRIPTION
△		
△		
△		

<b>DRAWN BY:</b> JWS	<b>SHEET</b>
<b>DESIGNED BY:</b> JWS	<b>30</b>
<b>CHECKED BY:</b> AJE	<b>OF 79 SHEETS</b>
<b>APPROVED BY:</b> SJK	<b>PROJECT DESCRIPTION</b>
<b>PROJECT NUMBER:</b> 120-010479	SEIBERT ROAD RECONSTRUCTION
<input checked="" type="checkbox"/> ISSUED FOR REVIEW	<input type="checkbox"/> ISSUED FOR BIDDING
<input type="checkbox"/> ISSUED FOR CONSTR.	<input type="checkbox"/> RECORD DRAWING

PLOT DATE = 2/19/2009  
 FILE NAME = F:\1010479\DOT PHASE III - TMM PHASE V\phase v\1010479\PPDR\DRAINAGE.plt5.dgn  
 PLOT SCALE = 28.00000 / IN.  
 USER NAME = jstevn