

FED. AID PROJECT	9177	IDOT SECTION	*	COUNTY	ST. CLAIR
IDOT JOB NO.	C-98-309-09	ILLINOIS			
IDOT CONTRACT NO.	97362	* 05-00007-03-PV; 06-00007-05-PV			

THOUVENOT, WADE & MOERCHEN, INC.
ENGINEERS ♦ SURVEYORS ♦ PLANNERS



- CORPORATE OFFICE**
4940 OLD COLLINSVILLE RD.
SWANSEA, ILLINOIS 62226
TEL (618) 624-4488
FAX (618) 624-6688
corp@twm-inc.com
- CARBONDALE OFFICE**
206 WEST COLLEGE ST., SUITE 2
CARBONDALE, ILLINOIS 62901
TEL (618) 549-8844
FAX (618) 549-8450
info@twm-inc.com
- EDWARDSVILLE OFFICE**
1015B CENTURY DRIVE
EDWARDSVILLE, ILLINOIS 62025
TEL (618) 656-4040
FAX (618) 656-4343
info@twm-inc.com
- ST. CHARLES OFFICE**
400 NORTH 5th ST., SUITE 101
ST. CHARLES, MISSOURI 63301
TEL (636) 724-8300
FAX (636) 724-8304
info@twm-inc.com
- WATERLOO OFFICE**
113 SOUTH MAIN STREET
WATERLOO, ILLINOIS 62298
TEL (618) 939-5050
FAX (618) 939-3938
info@twm-inc.com

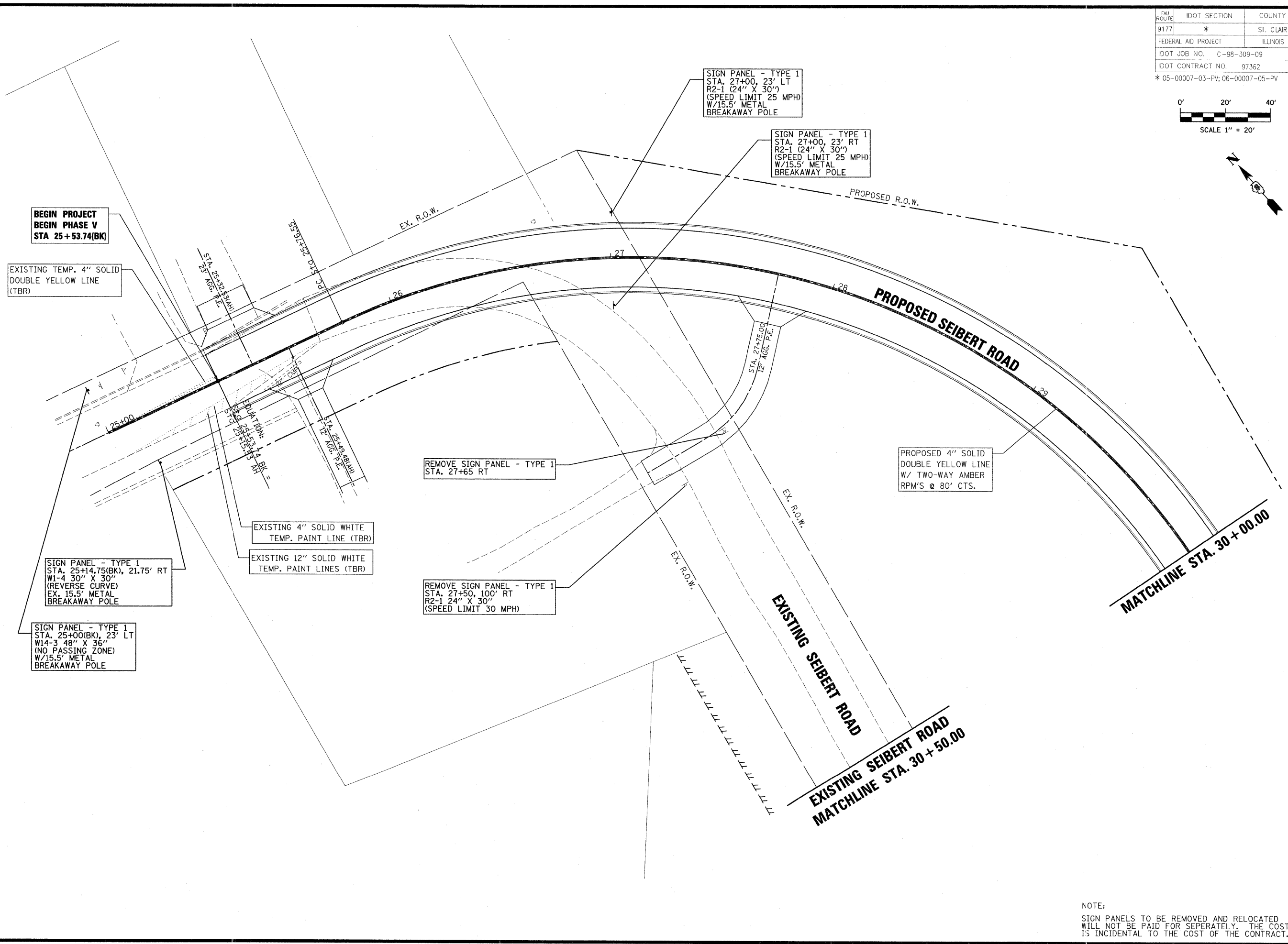
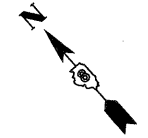
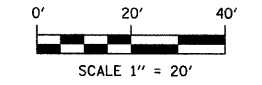
PROFESSIONAL REGISTRATIONS	LICENSE NO.
ILLINOIS PROFESSIONAL DESIGN FIRM	184-011220
PROFESSIONAL ENGINEERING CORP.	62-035370
PROFESSIONAL STRUCTURAL ENGR. CORP.	81-005202
ILLINOIS PROF. LAND SURVEYING CORP.	048-000029
MISSOURI PROFESSIONAL ENGR. CORP.	NC 001528
MISSOURI LAND SURVEYING CORP.	NC 000346

TITLE
PAVEMENT MARKING AND SIGNAGE PLAN
STA 25+53.74(BK) TO 30+00.00

PROJECT
SEIBERT ROAD RECONSTRUCTION - PHASE V
VILLAGE OF SHILOH
ST. CLAIR COUNTY, ILLINOIS

REV.	DATE	DESCRIPTION
▲		
▲		
▲		

DRAWN BY: JWS	SHEET
DESIGNED BY: JWS	35
CHECKED BY: SJK	OF 79 SHEETS
APPROVED BY: SJK	PROJECT DESCRIPTION
PROJECT NUMBER: 120-010479	SEIBERT ROAD RECONSTRUCTION
<input checked="" type="checkbox"/> ISSUED FOR REVIEW	<input type="checkbox"/> ISSUED FOR BIDDING
<input type="checkbox"/> ISSUED FOR CONSTR.	<input type="checkbox"/> RECORD DRAWING



NOTE:
SIGN PANELS TO BE REMOVED AND RELOCATED WILL NOT BE PAID FOR SEPERATELY. THE COST IS INCIDENTAL TO THE COST OF THE CONTRACT.

PLOT DATE = 2/19/2009
 FILE NAME = F:\010479\DOT PHASE V - TWM\PHASE III\Phase III\010479-PVMTWRK-PHG.dgn
 PLOT SCALE = 28.0000 / 1 IN.
 USER NAME = db9ps