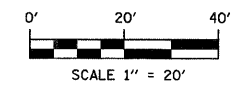


PLOT DATE = 02/20/2009
 FILE NAME = P:\010479\DOT PHASE V - TWM PHASE III\phaseIII\0479B-R0W_P103.dgn
 PLOT SCALE = 20.0000 / 1 IN.
 USER NAME = jason

FAU ROUTE	IDOT SECTION	COUNTY
9177	*	ST. CLAIR
FEDERAL AID PROJECT		ILLINOIS
IDOT JOB NO.	C-98-309-09	
IDOT CONTRACT NO.	97362	
* 05-00007-03-PV; 06-00007-05-PV		



THOUVENOT, WADE & MOERCHEN, INC.
 ENGINEERS ♦ SURVEYORS ♦ PLANNERS



- CORPORATE OFFICE**
 4940 OLD COLLINSVILLE RD.
 SWANSEA, ILLINOIS 62226
 TEL (618) 624-4488
 FAX (618) 624-6688
 corp@twm-inc.com
- CARBONDALE OFFICE**
 208 WEST COLLEGE ST., SUITE 2
 CARBONDALE, ILLINOIS 62901
 TEL (618) 549-8844
 FAX (618) 549-8450
 info@twm-inc.com
- EDWARDSVILLE OFFICE**
 1015B CENTURY DRIVE
 EDWARDSVILLE, ILLINOIS 62025
 TEL (618) 656-4040
 FAX (618) 656-4343
 info@twm-inc.com
- ST. CHARLES OFFICE**
 400 NORTH 5th ST., SUITE 101
 ST. CHARLES, MISSOURI 63301
 TEL (636) 724-8300
 FAX (636) 724-8304
 info@twm-inc.com
- WATERLOO OFFICE**
 113 SOUTH MAIN STREET
 WATERLOO, ILLINOIS 62298
 TEL (618) 939-5050
 FAX (618) 939-3938
 info@twm-inc.com

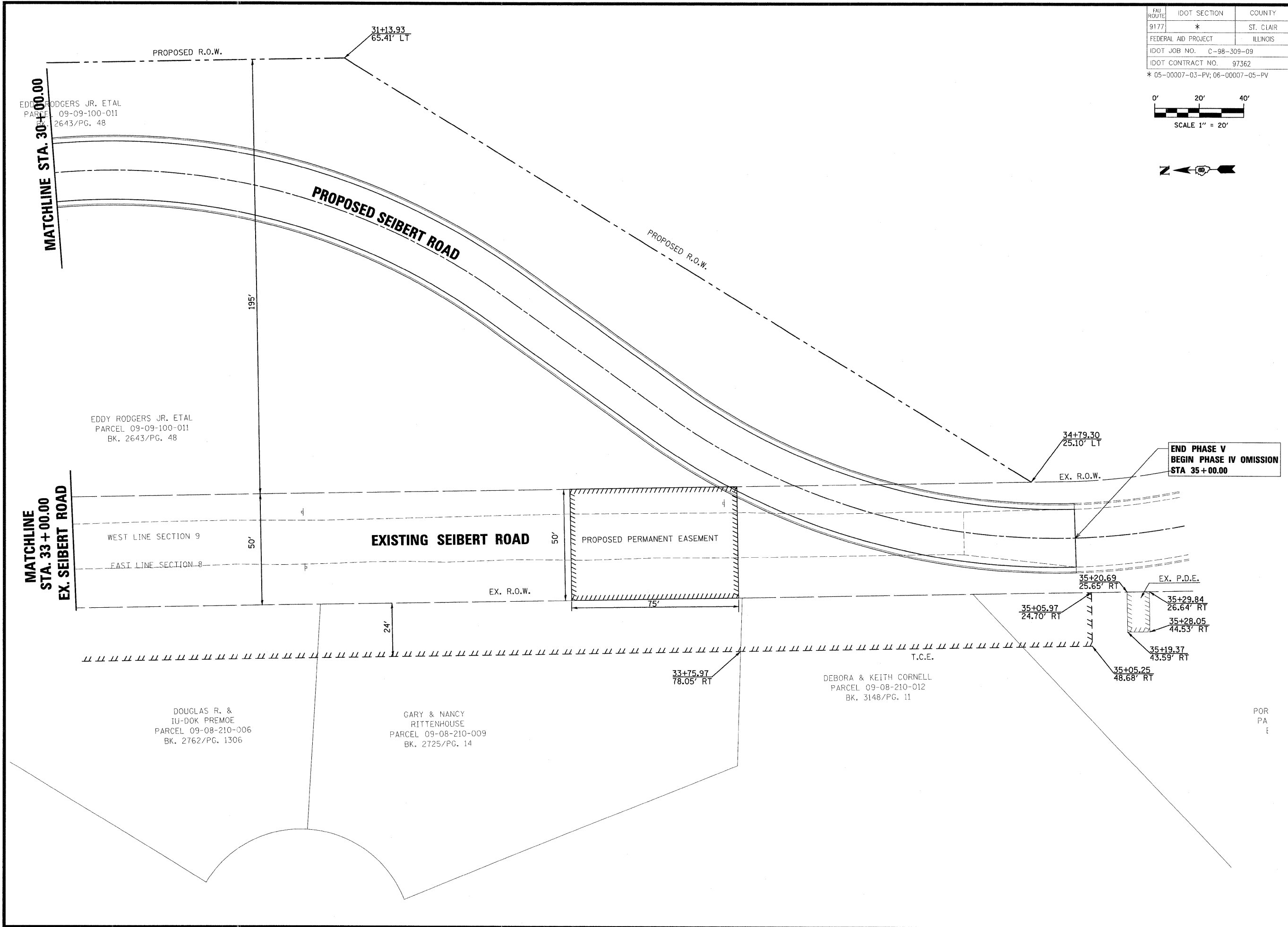
PROFESSIONAL REGISTRATIONS	LICENSE NO.
ILLINOIS PROFESSIONAL DESIGN FIRM	184-001220
PROFESSIONAL ENGINEERING CORP.	62-035370
PROFESSIONAL STRUCTURAL ENGR. CORP.	81-005202
ILLINOIS PROF. LAND SURVEYING CORP.	048-000029
MISSOURI PROFESSIONAL ENGR. CORP.	NC 001528
MISSOURI LAND SURVEYING CORP.	NC 000346

TITLE
 RIGHT-OF-WAY SHEETS
 STA. 30+00.00 TO STA. 35+00.00

PROJECT:
 SEIBERT ROAD
 RECONSTRUCTION - PHASE V
 VILLAGE OF SHOLOH
 ST. CLAIR COUNTY, ILLINOIS

REV.	DATE	DESCRIPTION

DRAWN BY: JWS	SHEET
DESIGNED BY: JWS	40
CHECKED BY: SJK	OF 79 SHEETS
APPROVED BY: SJK	PROJECT DESCRIPTION
PROJECT NUMBER: 120-010479	SEIBERT ROAD RECONSTRUCTION
<input checked="" type="checkbox"/> ISSUED FOR REVIEW	<input type="checkbox"/> ISSUED FOR BIDDING
<input type="checkbox"/> ISSUED FOR CONSTR.	<input type="checkbox"/> RECORD DRAWING



POR
 PA
 E