

Point	North	East	Elev.	Description
1	685449.7344	2376100.4030	533.07	TOP BACK CURB
2	685444.8695	2376102.5330	532.76	TOP BACK CURB
3	685435.8738	2376103.8840	532.47	TOP BACK CURB
4	685426.9311	2376102.2180	531.89	TOP BACK CURB
5	685419.0260	2376097.7170	531.43	TOP BACK CURB
6	685411.9726	2376091.1330	531.03	TOP BACK CURB
7	685405.8568	2376083.6710	530.66	TOP BACK CURB
8	685400.7875	2376075.4620	530.32	TOP BACK CURB
9	685396.8544	2376066.6510	530.04	TOP BACK CURB
10	685394.1275	2376057.3960	529.82	TOP BACK CURB
11	685392.6551	2376047.8610	529.67	TOP BACK CURB
12	685392.4634	2376038.2150	529.56	TOP BACK CURB
13	685392.5797	2376036.2840	529.54	TOP BACK CURB
14	685393.3060	2376026.3210	529.50	TOP BACK CURB
15	685394.0806	2376016.3510	529.49	TOP BACK CURB
16	685394.6668	2376008.8070	529.50	TOP BACK CURB
17	685395.0714	2376003.5990	529.54	TOP BACK CURB
18	685396.1904	2375989.1970	529.77	TOP BACK CURB
19	685398.7369	2376165.8960	529.03	TOP BACK CURB
20	685401.2140	2376157.5710	529.39	TOP BACK CURB
21	685402.7755	2376148.0500	529.98	TOP BACK CURB
22	685402.1321	2376138.9760	530.27	TOP BACK CURB
23	685398.5553	2376130.6120	530.35	TOP BACK CURB
24	685395.4497	2376126.6350	530.32	TOP BACK CURB
25	685389.6587	2376120.0340	530.21	TOP BACK CURB
26	685382.2976	2376110.0600	530.07	TOP BACK CURB
27	685375.9558	2376099.4030	529.93	TOP BACK CURB
28	685370.6949	2376088.1830	529.77	TOP BACK CURB
29	685363.6504	2376064.6620	529.46	TOP BACK CURB
30	685361.3248	2376041.9790	529.33	TOP BACK CURB
31	685362.4871	2376020.6360	529.36	TOP BACK CURB
32	685364.0364	2376000.6960	529.55	TOP BACK CURB
33	685365.1174	2375986.7820	529.77	TOP BACK CURB
34	685436.3562	2376076.4720	N/A	RADIUS POINT
35	685464.8008	2376041.6020	N/A	RADIUS POINT
36	685330.6915	2376141.1170	N/A	RADIUS POINT
37	685375.4848	2376145.4250	N/A	RADIUS POINT

FAU ROUTE	IDOT SECTION	COUNTY
9177	*	ST. CLAIR
FEDERAL AID PROJECT	ILLINOIS	
IDOT JOB NO.	C-98-309-09	
IDOT CONTRACT NO.	97362	
* 05-00007-03-PV; 06-00007-05-PV		

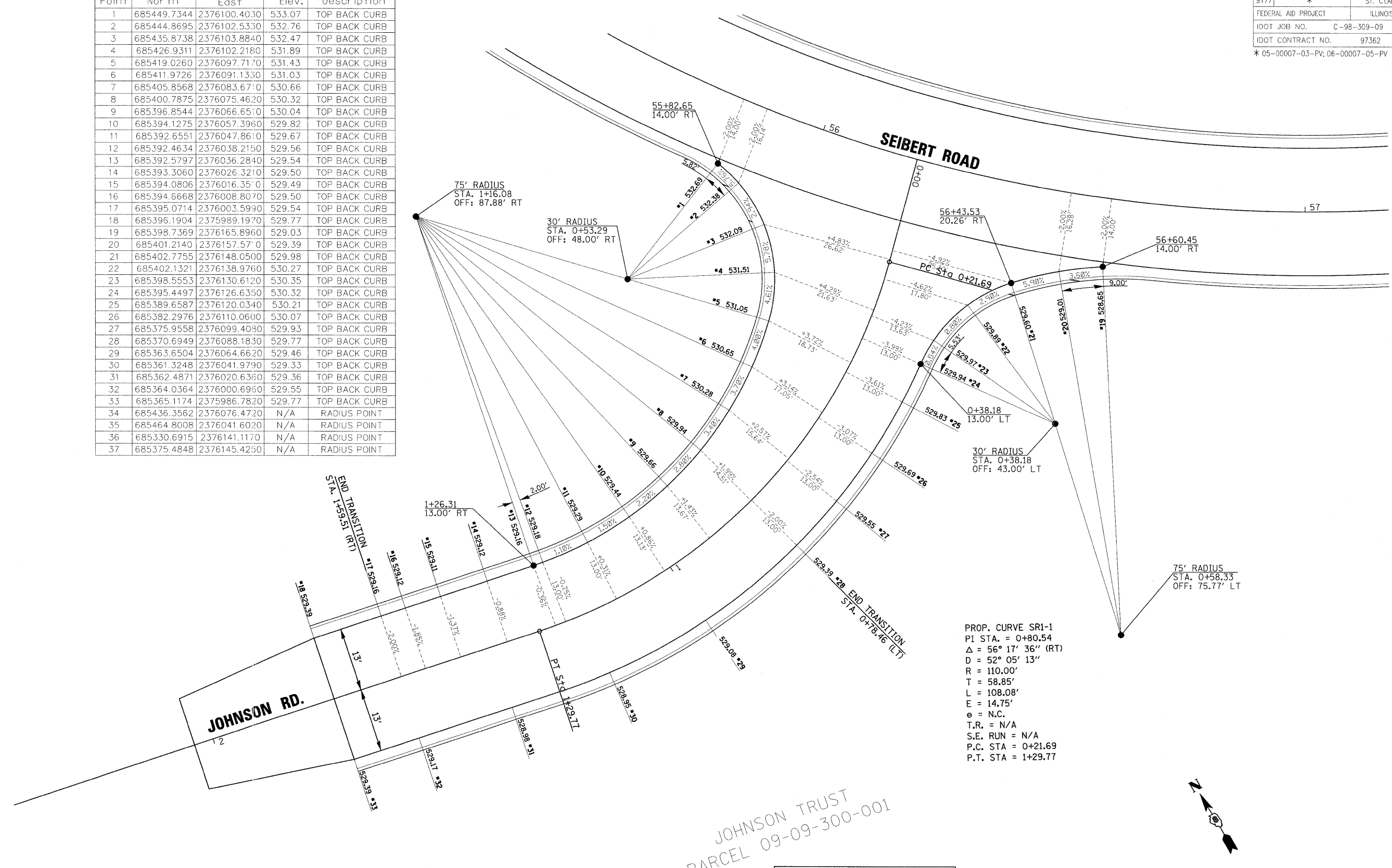
THOUVENOT, WADE & MOERCHEN, INC.
ENGINEERS ♦ SURVEYORS ♦ PLANNERS

- TWM**
- ✗ **CORPORATE OFFICE**
4940 OLD COLLINSVILLE RD.
SWANSEA, ILLINOIS 62226
TEL (618) 624-4488
FAX (618) 624-6688
corp@twm-inc.com
 - **CARBONDALE OFFICE**
206 WEST COLLEGE ST., SUITE 2
CARBONDALE, ILLINOIS 62901
TEL (618) 549-8844
FAX (618) 549-8350
info@twm-inc.com
 - **EDWARDSVILLE OFFICE**
10153 CENTURY DRIVE
EDWARDSVILLE, ILLINOIS 62025
TEL (618) 656-4040
FAX (618) 656-4343
info@twm-inc.com
 - **ST. CHARLES OFFICE**
400 NORTH 5th ST., SUITE 101
ST. CHARLES, MISSOURI 63301
TEL (636) 724-8300
FAX (636) 724-8304
info@twm-inc.com
 - **WATERLOO OFFICE**
113 SOUTH MAIN STREET
WATERLOO, ILLINOIS 62298
TEL (618) 939-5050
FAX (618) 939-3938
info@twm-inc.com

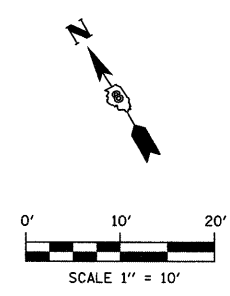
PROFESSIONAL REGISTRATIONS	LICENSE NO.
ILLINOIS PROFESSIONAL DESIGN FIRM	184-001220
PROFESSIONAL ENGINEERING CORP.	62-035370
PROFESSIONAL STRUCTURAL ENGR. CORP.	81-002022
ILLINOIS PROF. LAND SURVEYING CORP.	048-000029
MISSOURI PROFESSIONAL ENGR. CORP.	NC 001528
MISSOURI LAND SURVEYING CORP.	NC 000346

INTERSECTION DETAILS

SEIBERT ROAD
RECONSTRUCTION - PHASE III
VILLAGE OF SHOLOH
ST. CLAIR COUNTY, ILLINOIS



NOTE:
ALL ELEVATIONS INDICATED ARE
E.O.P. (EDGE OF PAVEMENT) ELEVATIONS.
E.O.P. ELEVATIONS ARE AT 10'
INTERVALS UNLESS OTHERWISE NOTED.



REV.	DATE	DESCRIPTION
△		
△		
△		

DRAWN BY: JWS	SHEET
DESIGNED BY: JWS	43
CHECKED BY: AJE	OF 79 SHEETS
APPROVED BY: SJK	PROJECT DESCRIPTION
PROJECT NUMBER: 20-010479	SEIBERT ROAD RECONSTRUCTION
ISSUED FOR REVIEW	ISSUED FOR BIDDING
ISSUED FOR CONSTR.	RECORD DRAWING

PLOT DATE = 2/19/2009
FILE NAME = P:\010479\9-dgn\IDOT PHASE III - TWM PHASE V\phase v\010479_INTD1L.plt5.dgn
PLOT SCALE = 10.00000 / IN.
USER NAME = jws@t