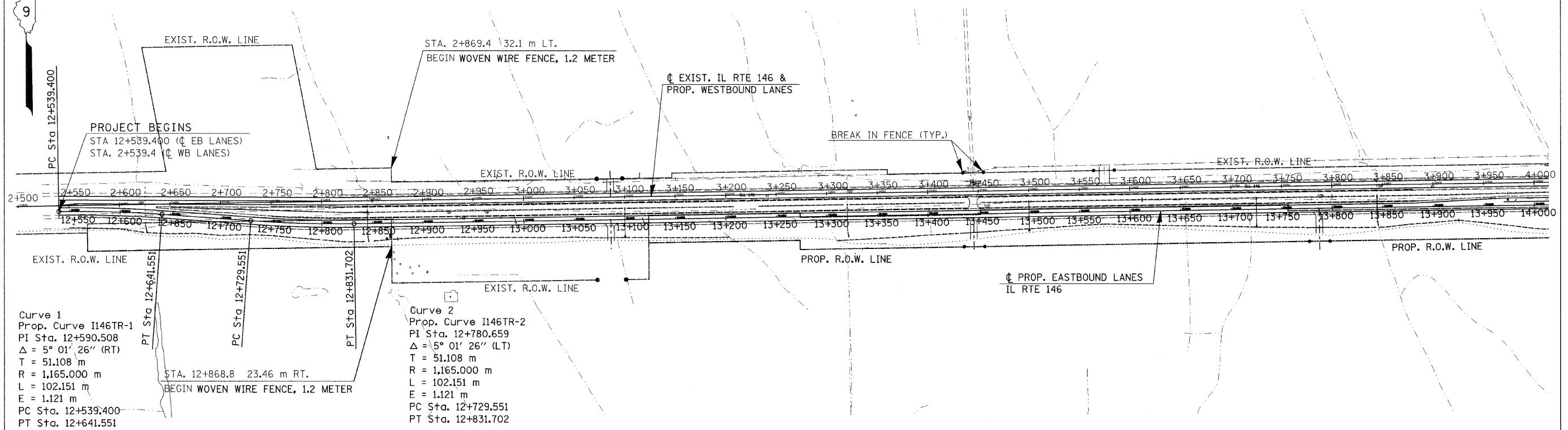


| F.A.P. RTE. | SECTION | COUNTY | TOTAL SHEETS NO. |
|---------------------|---------------------------|-----------|------------------|
| 312 | 101-2(A,B,R) | ALEXANDER | 152 30 |
| STA. | TO STA. | | |
| FED. ROAD DIST. NO. | ILLINOIS FED. AID PROJECT | | |

1:2000 RATIO



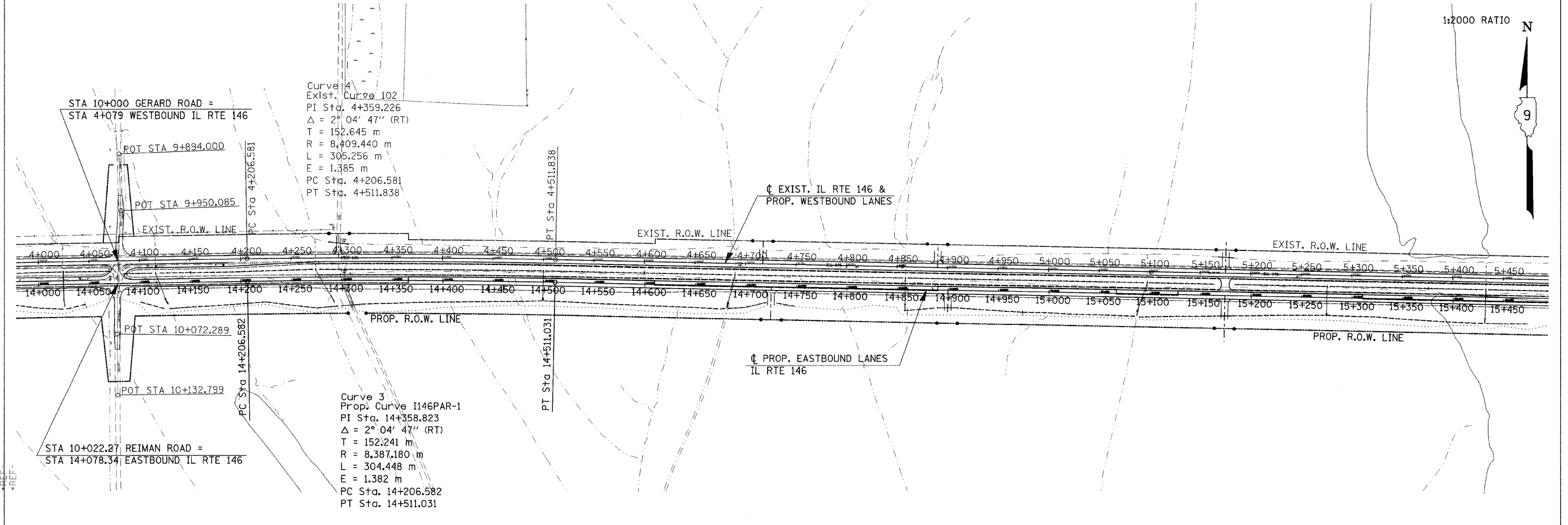
NOTE:
 PROPOSED FENCING FOLLOWS EXISTING AND/OR PROPOSED R.O.W. LINES UNLESS NOTED OTHERWISE. SEE FENCING SCHEDULE FOR STATIONS AND OFFSETS.



Curve 1
 Prop. Curve I146TR-1
 PI Sta. 12+590.508
 $\Delta = 5^\circ 01' 26''$ (RT)
 T = 51.108 m
 R = 1,165.000 m
 L = 102.151 m
 E = 1.121 m
 PC Sta. 12+539.400
 PT Sta. 12+641.551

Curve 2
 Prop. Curve I146TR-2
 PI Sta. 12+780.659
 $\Delta = 5^\circ 01' 26''$ (LT)
 T = 51.108 m
 R = 1,165.000 m
 L = 102.151 m
 E = 1.121 m
 PC Sta. 12+729.551
 PT Sta. 12+831.702

1:2000 RATIO



Curve 4
 Exist. Curve 102
 PI Sta. 4+359.226
 $\Delta = 2^\circ 04' 47''$ (RT)
 T = 152.645 m
 R = 8,409.440 m
 L = 305.256 m
 E = 1.385 m
 PC Sta. 4+206.581
 PT Sta. 4+511.838

Curve 3
 Prop. Curve I146PAR-1
 PI Sta. 14+358.823
 $\Delta = 2^\circ 04' 47''$ (RT)
 T = 152.241 m
 R = 8,387.180 m
 L = 304.448 m
 E = 1.382 m
 PC Sta. 14+206.582
 PT Sta. 14+511.031

DATE-TIME
 DGN-SPEC
 REF-REF
 REF-REF