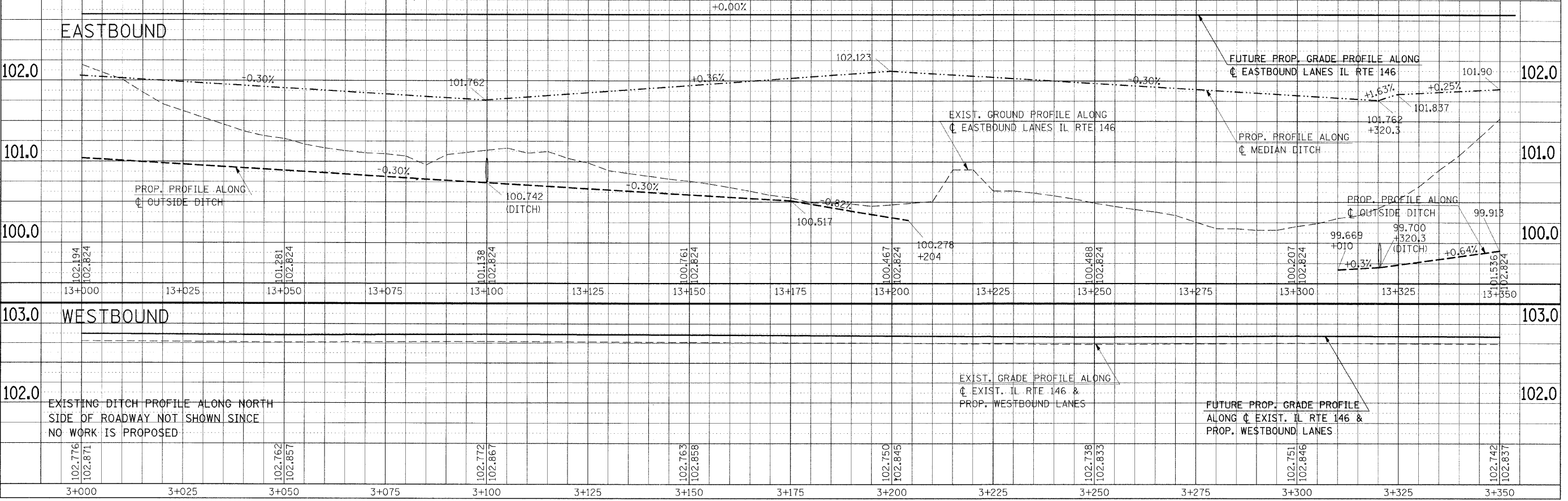
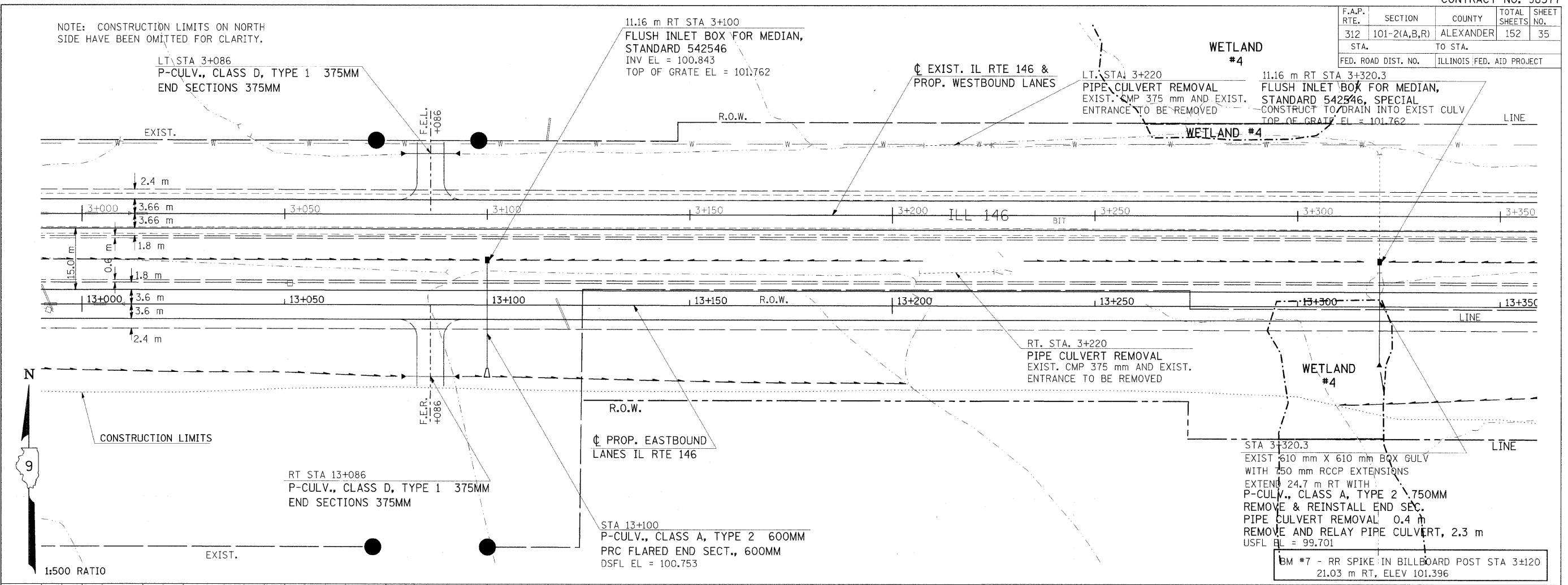


F.A.P. RTE.	SECTION	COUNTY	TOTAL SHEETS NO.
312	101-2(A,B,R)	ALEXANDER	152
STA.	TO STA.	ILLINOIS FED. AID PROJECT	
FED. ROAD DIST. NO.			ILLINOIS FED. AID PROJECT

FINAL SURVEY	SURVEYED	BY	DATE
NO.	NO.		
NOTE: BOOTH REVISIONS ARE AS CHECKED			



Friday November 21, 2008 @ 10:22:45 AM  
 c:\pw\_work\pwwork\headon\dm\3642\m2259\p1.dgn LV=2-20,24-60,62-63  
 c:\pw\_work\pwwork\headon\dm\3642\m2259\p2.dgn LV=1-20,22-63  
 c:\pw\_work\pwwork\headon\dm\3642\m2259\p3.dgn LV=2-9,11,13-17,19,25-60

PLAN-PROFILE - STA 3+000 TO STA 3+350