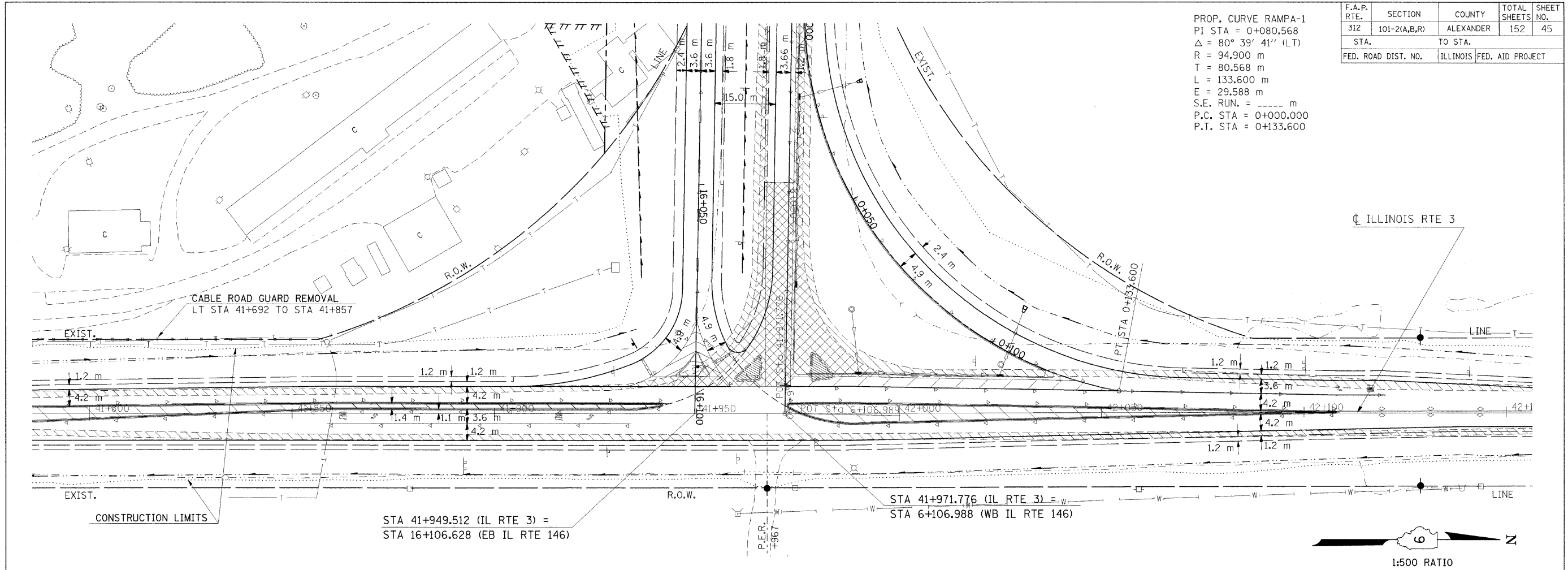


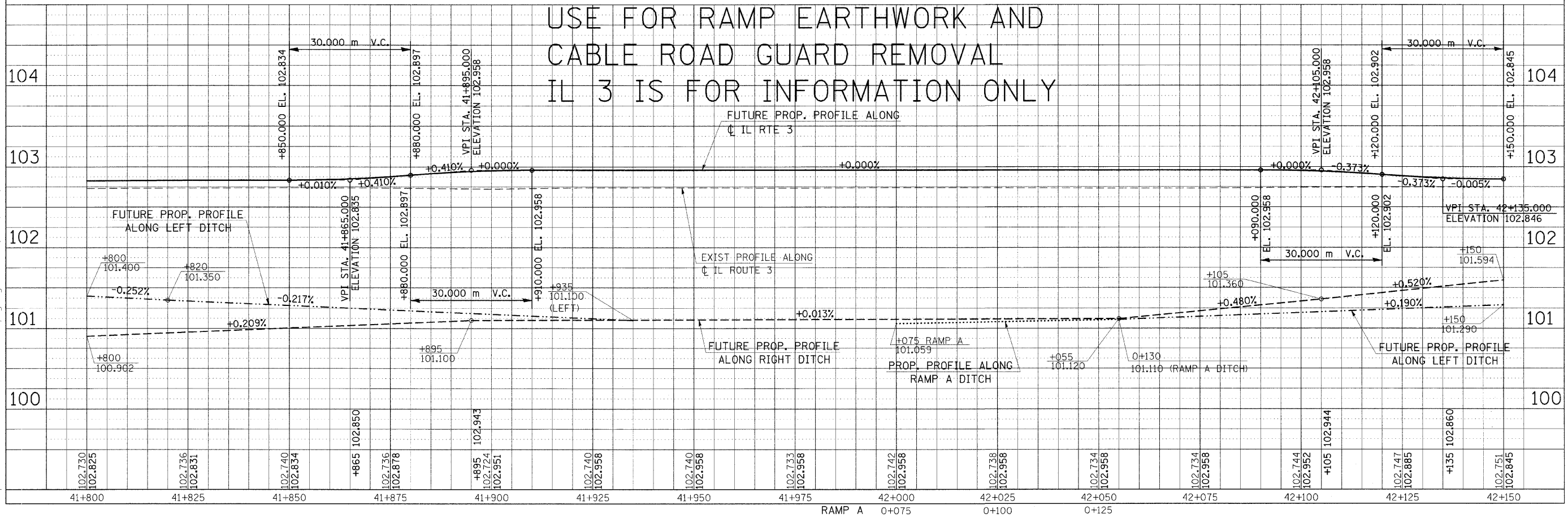
F.A.P. RTE.	SECTION	COUNTY	TOTAL SHEETS	SHEET NO.
312	101-2(A,B,R)	ALEXANDER	152	45
STA.	TO STA.			
FED. ROAD DIST. NO.	ILLINOIS FED. AID PROJECT			

PROP. CURVE RAMP A-1  
 PI STA = 0+080.568  
 $\Delta = 80^\circ 39' 41''$  (LT)  
 R = 94.900 m  
 T = 80.568 m  
 L = 133.600 m  
 E = 29.588 m  
 S.E. RUN. = ----- m  
 P.C. STA = 0+000.000  
 P.T. STA = 0+133.600

FINAL SURVEY	BY	DATE
SURVEYED		
PLOTTED		
NOTE BOOK		
TEMP. PLATE		
AREAS		
CHECKED		
NO.		



USE FOR RAMP EARTHWORK AND  
 CABLE ROAD GUARD REMOVAL  
 IL 3 IS FOR INFORMATION ONLY



Friday October 31, 2008 @ 12:44 PM  
 c:\pwworkspace\pwwork\PROJECTS\HEADCN\43642\m02599a2.dgn LV=2-26,24-57,59-63  
 c:\pwworkspace\pwwork\PROJECTS\HEADCN\43642\m02599a.dgn LV=2-9,11,14-15,17,19-20,22-5-43,45-50  
 c:\pwworkspace\pwwork\PROJECTS\HEADCN\43642\m02599a.dgn LV=1-15,17-21,23-56,58-63