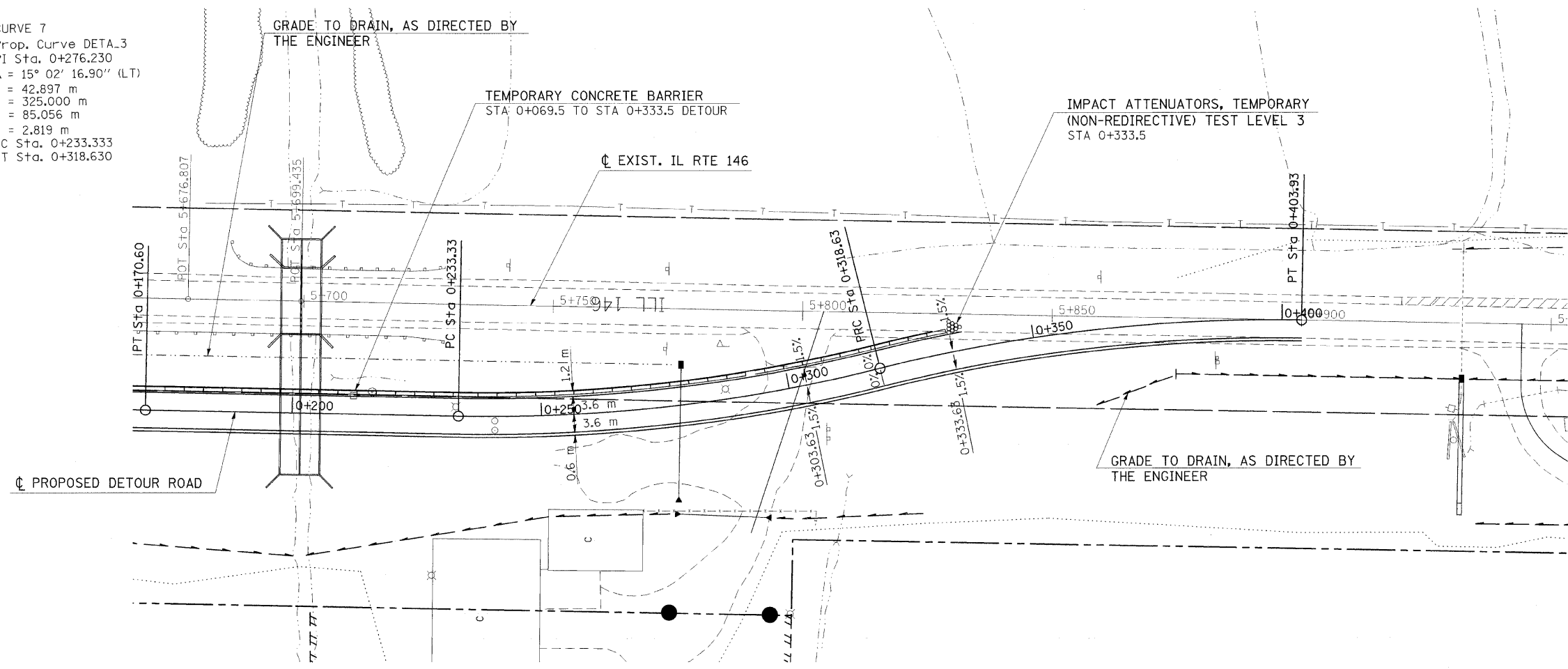


F.A.P. RTE.	SECTION	COUNTY	TOTAL SHEETS	SHEET NO.
312	101-2(A,B,R)	ALEXANDER	152	47
STA.		TO STA.		
FED. ROAD DIST. NO.		ILLINOIS FED. AID PROJECT		

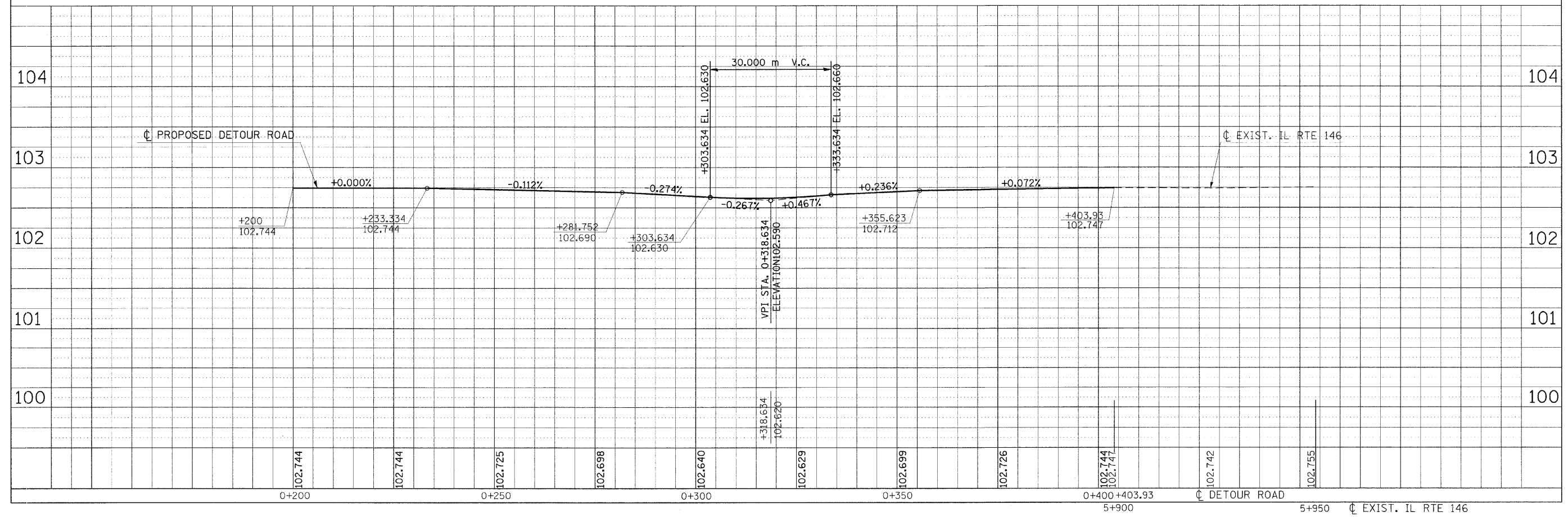
CURVE 7  
 Prop. Curve DETA.3  
 PI Sta. 0+276.230  
 $\Delta = 15^\circ 02' 16.90''$  (LT)  
 T = 42.897 m  
 R = 325.000 m  
 L = 85.056 m  
 E = 2.819 m  
 PC Sta. 0+233.333  
 PT Sta. 0+318.630

CURVE 8  
 Prop. Curve DETA.4  
 PI Sta. 0+361.530  
 $\Delta = 15^\circ 02' 16.90''$  (LT)  
 T = 42.897 m  
 R = 325.000 m  
 L = 85.056 m  
 E = 2.819 m  
 PC Sta. 0+318.630  
 PT Sta. 0+403.930

FINAL SURVEY	BY	DATE
SURVEYED		
PLOTTED		
NOTE BOOK		
TEMPLATE		
AREAS		
CHECKED		
NO.		



1:500 RATIO



Thursday October 30, 2008 @ 2:22:30 PM  
 c:\pwworking\pwworking\DOT\HEADCN\dms43642\m02599p1.dgn LV=2-20.21-60.62-63