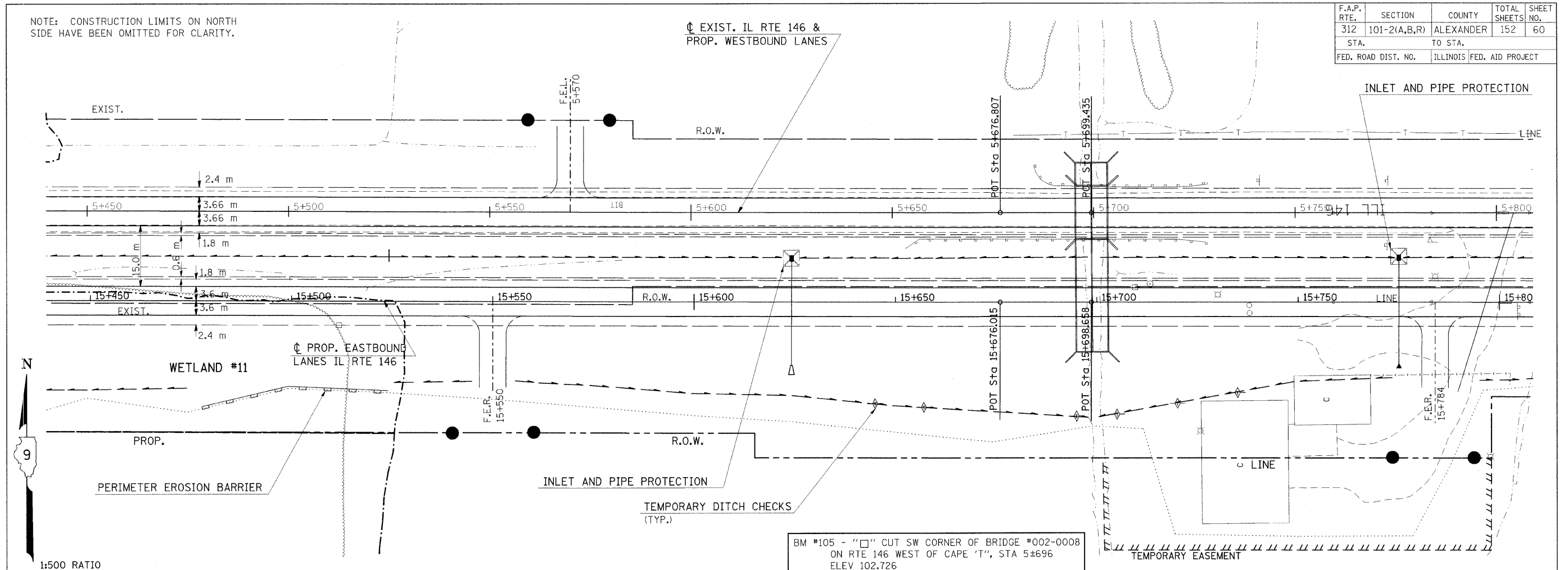
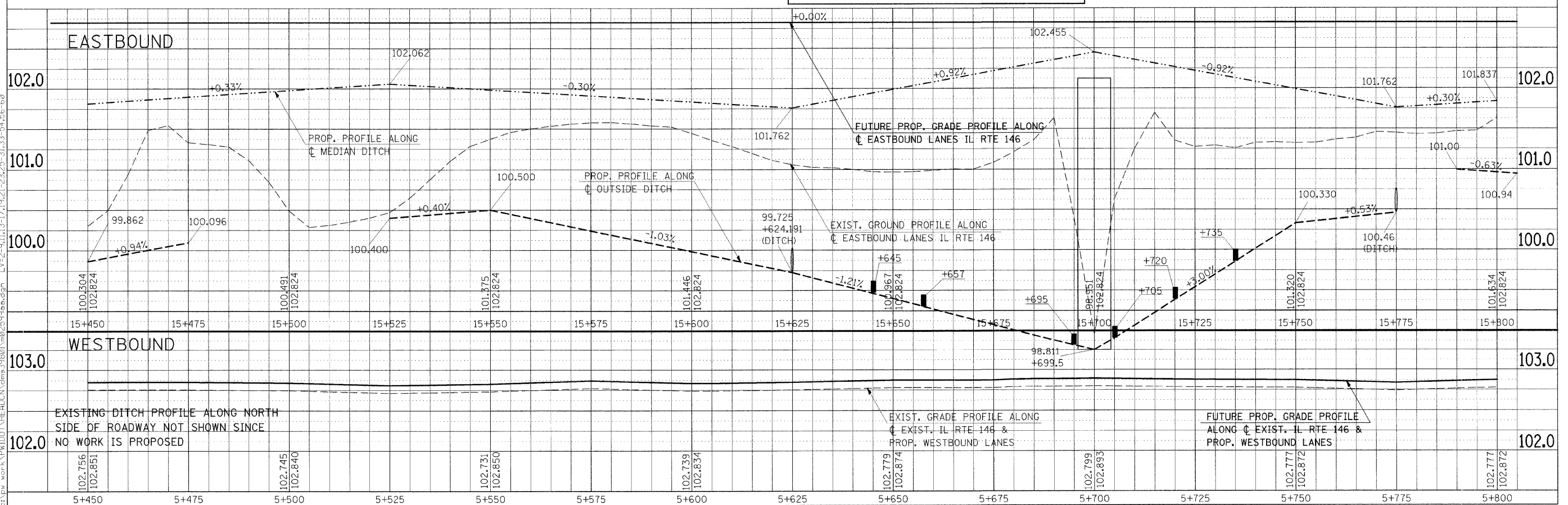


F.A.P. RTE.	SECTION	COUNTY	TOTAL SHEETS	SHEET NO.
312	101-2(A,B,R)	ALEXANDER	152	60
STA.	TO STA.			
FED. ROAD DIST. NO.	ILLINOIS FED. AID PROJECT			

NOTE: CONSTRUCTION LIMITS ON NORTH SIDE HAVE BEEN OMITTED FOR CLARITY.



FINAL SURVEY	BY	DATE
SURVEYED		
PLOTTED		
TEMPLATE		
NOTE BOOK		
AREAS CHECKED		
NO.		



Friday, November 21, 2008 @ 11:50:49 AM  
 c:\pwworkspace\pwworkspace\road\ms3642\m02599p1.dgn LV=2-23,25-60,62-63  
 c:\pwworkspace\pwworkspace\road\ms3642\m02599p1.dgn LV=1-19,21-63  
 c:\pwworkspace\pwworkspace\road\ms3642\m02599p1.dgn LV=2-9,11,13-17,19,21-23,25-31,33-54,56-60

TEMPORARY EROSION CONTROL PLAN - STA 5+450 TO STA 5+800