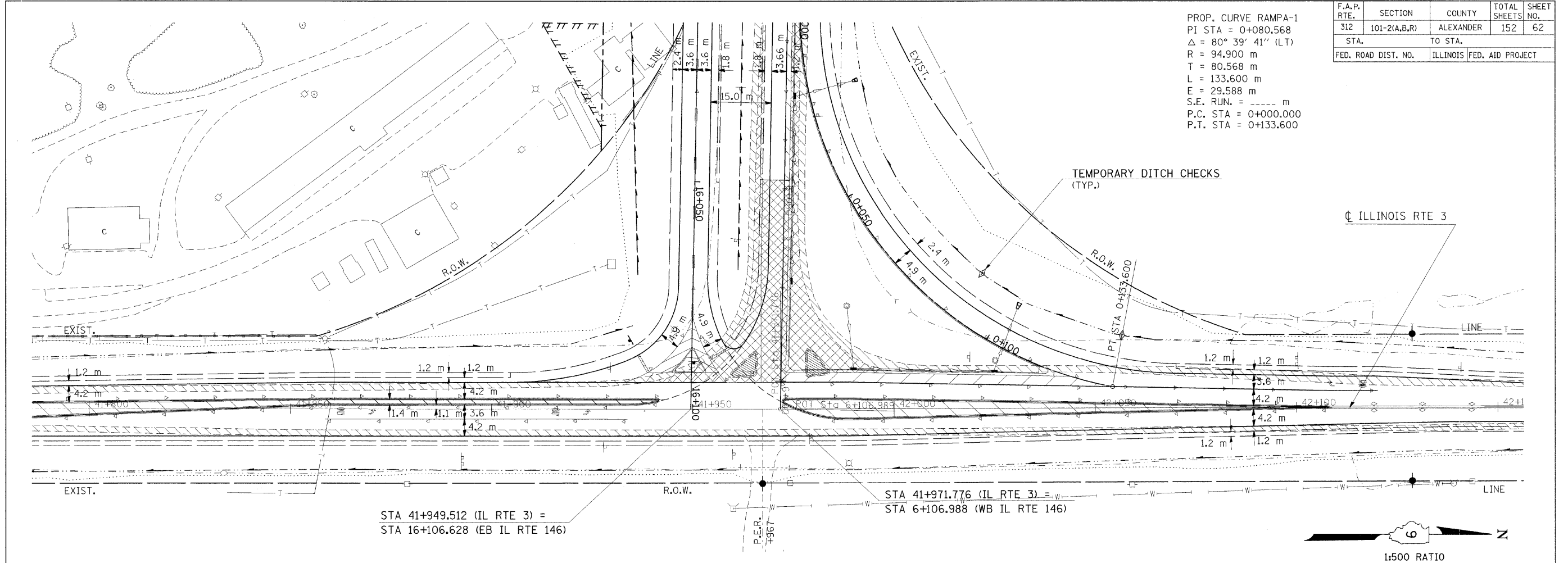


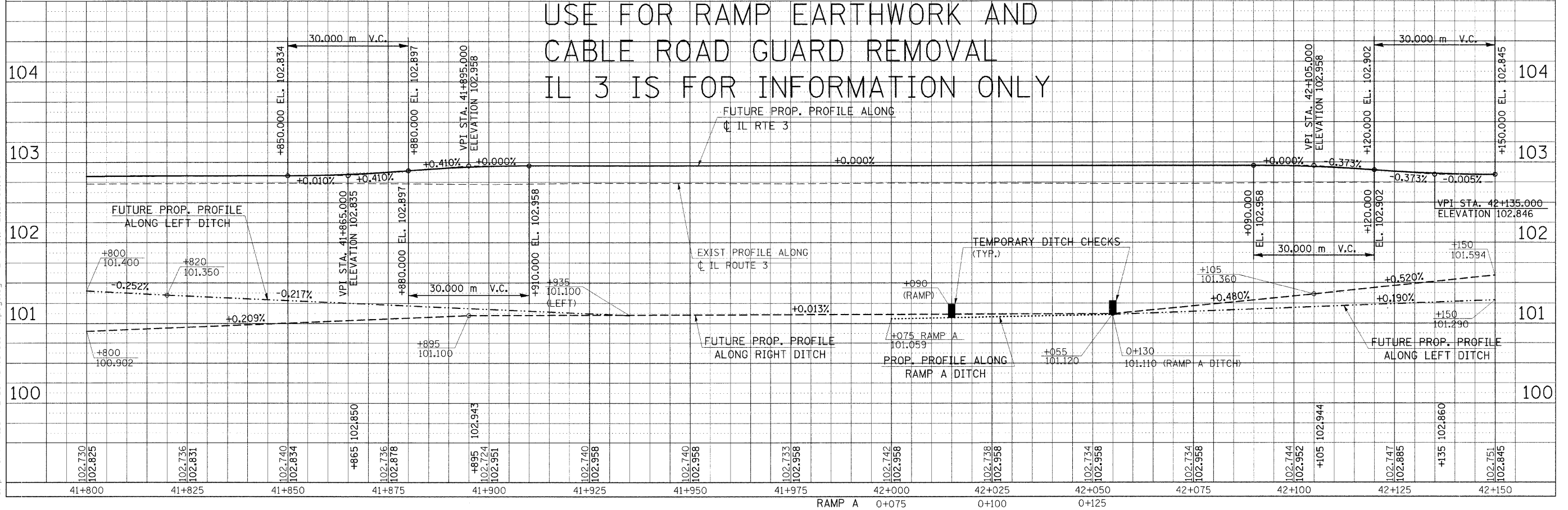
F.A.P. RTE.	SECTION	COUNTY	TOTAL SHEETS	SHEET NO.
312	101-2(A,B,R)	ALEXANDER	152	62
STA.		TO STA.		
FED. ROAD DIST. NO.		ILLINOIS FED. AID PROJECT		

PROP. CURVE RAMP A-1
 PI STA = 0+080,568
 $\Delta = 80^\circ 39' 41''$ (LT)
 R = 94,900 m
 T = 80,568 m
 L = 133,600 m
 E = 29,588 m
 S.E. RUN. = ----- m
 P.C. STA = 0+000,000
 P.T. STA = 0+133,600

FINAL SURVEY	BY	DATE
SURVEYED		
FLOTTED		
NOTE BOOK		
TEMPLATE		
AREAS	CHECKED	
NO.		



USE FOR RAMP EARTHWORK AND
 CABLE ROAD GUARD REMOVAL
 IL 3 IS FOR INFORMATION ONLY



Friday October 31, 2008 @ 12:31:35 PM
 c:\p\work\KPMIDOT\HEADLINE\dm43642\m02599p2.dgn LV=2-23-25-57-59-63
 c:\p\work\KPMIDOT\HEADLINE\dm39801\m02599p2.dgn LV=2-9-11-14-15-17-19-23-25-43-45-60
 c:\p\work\KPMIDOT\HEADLINE\dm39801\m02599p2.dgn LV=1-15-17-21-23-56-58-63