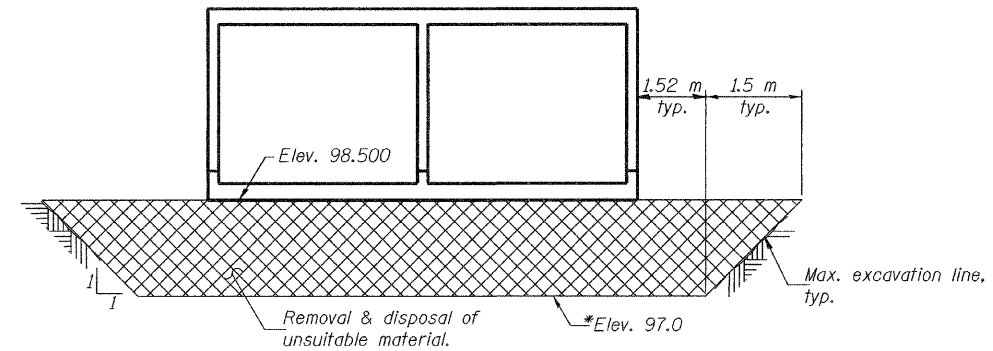


STATE OF ILLINOIS  
DEPARTMENT OF TRANSPORTATION

ROUTE NO.	SECTION	COUNTY	TOTAL SHEETS	SHEET NO.	SHEET NO. 2
F.A.P. 312	101B-1	ALEXANDER	152	84	11 SHEETS
FED. ROAD DIST. NO. 7	ILLINOIS	FED. AID PROJECT-	Contract No. 98577		

**GENERAL NOTES**

Reinforcement bars shall conform to the requirements of ASTM A 706 Gr. 420 MPa. See special provisions.  
Layout of slope protection system may be varied in the field to suit ground conditions as directed by the Engineer.  
All dimensions are in millimeters (mm) except as noted.  
Excavation behind existing abutment walls shall be performed to balance front and back soil pressure before removing the existing superstructure.  
Precast culvert alternate is not allowed.  
All reinforcement bars shall be epoxy coated.

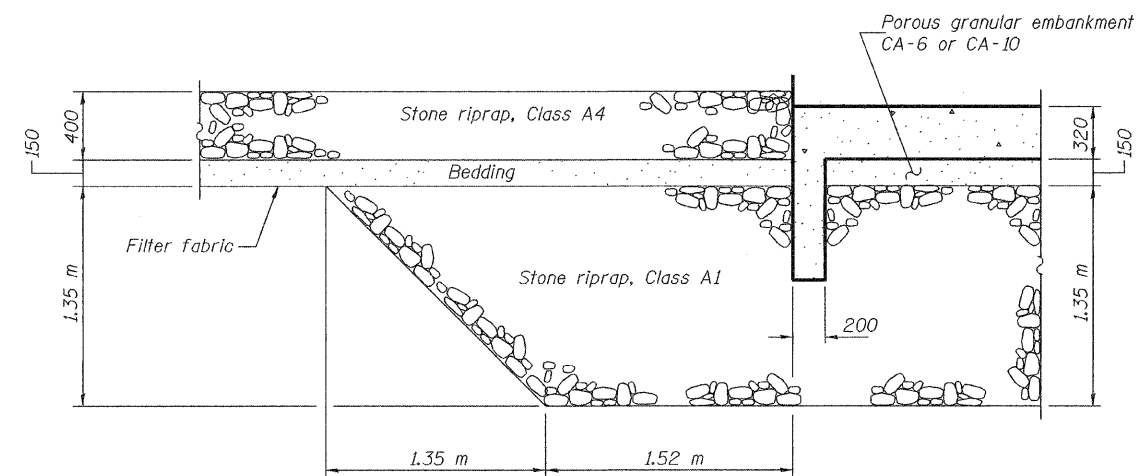


**SECTION THRU BARRELS**

\*See Note A on sheet 1 of 11.

**TOTAL BILL OF MATERIAL**

ITEM	UNIT	TOTAL
Removal of Existing Structures	Each	1
Concrete Box Culverts	m <sup>3</sup>	347.6
Reinforcement Bars, Epoxy Coated	kg	36000
Name Plates	Each	1
Stone Riprap, Class A4	m <sup>2</sup>	146.9
Filter Fabric	m <sup>2</sup>	146.9
Temporary Sheet Piling	m <sup>2</sup>	94.9
Bar Splacers	Each	140
Removal and Disposal of Unsuitable Material	m <sup>3</sup>	987.1
Porous Granular Embankment	m <sup>3</sup>	103.0
Stone Riprap, Class A1	M Ton	1682.0



**DETAIL A**

DESIGNED	J.S.B.
CHECKED	C.C.C.
DRAWN	h.t. duong R.T.D.
CHECKED	J.S.B./C.C.C.

Jan 26, 2009  
EXAMINED *Thomas J. Donagale*  
ENGINEER OF STRUCTURAL DESIGN  
PASSED *Ralph E. Anderson*  
ENGINEER OF BRIDGES AND STRUCTURES

**GENERAL DATA**  
F.A.P. RTE. 312 - SECTION 101B-1  
ALEXANDER COUNTY  
STATION 5+699.435  
STRUCTURE NO. 002-2002