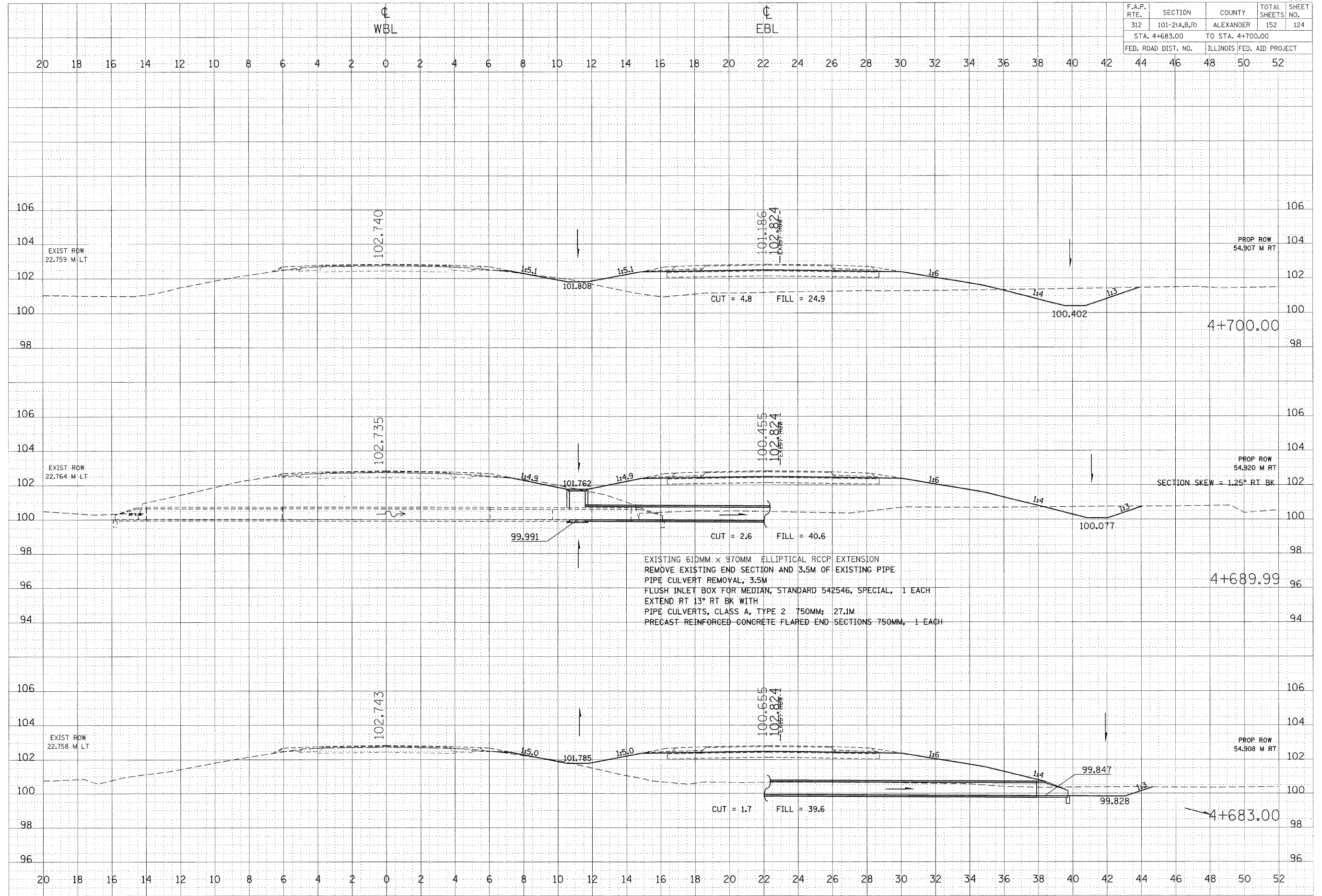


F.A.P. RTE.	SECTION	COUNTY	TOTAL SHEETS	SHEET NO.
312	101-2(A,B,R)	ALEXANDER	152	124
STA. 4+683.00		TO STA. 4+700.00		
FED. ROAD DIST. NO.		ILLINOIS FED. AID PROJECT		



EXISTING 610MM x 970MM ELLIPTICAL RCCP EXTENSION  
 REMOVE EXISTING END SECTION AND 3.5M OF EXISTING PIPE  
 PIPE CULVERT REMOVAL, 3.5M  
 FLUSH INLET BOX FOR MEDIAN, STANDARD 542546, SPECIAL, 1 EACH  
 EXTEND RT 13° RT BK WITH  
 PIPE CULVERTS, CLASS A, TYPE 2 750MM, 27.1M  
 PRECAST REINFORCED CONCRETE FLARED END SECTIONS 750MM, 1 EACH

DATE: \_\_\_\_\_ BY: \_\_\_\_\_  
 SURVEYED: \_\_\_\_\_ PLOTTED: \_\_\_\_\_  
 CHECKED: \_\_\_\_\_ DATE: \_\_\_\_\_  
 USER NAME: leftwchd