

F.A. RTE.	SECTION	COUNTY	TOTAL SHEETS	SHEET NO.
885	5B-1	HARDIN	48	1
FED. ROAD DIST. NO.	ILLINOIS	CONTRACT NO.	98949	

**STATE OF ILLINOIS
DEPARTMENT OF TRANSPORTATION
DIVISION OF HIGHWAYS**

**PROPOSED
HIGHWAY PLANS**

**FAP ROUTE 885 (IL 34 / 146)
SECTION 5B-1
PROJECT: BRF-0885(042)
HARDIN COUNTY
C-99-012-06**

**STRUCTURE REPLACEMENT
OVER THREE MILE CREEK**

**FOR INDEX OF SHEETS, SEE SHEET NO. 2
FOR SUMMARY OF QUANTITIES, SEE SHEET NO. 3**

TRAFFIC DATA:
2008 ADT = 2760
18% TRUCKS
POSTED SPEED = 55 MPH

D-99-016-06



GEOTECH
ENGINEERING & TESTING, INC.

601 North 4th Street
Murray, Kentucky 42071
Phone: (270) 753-7307
Fax: (270) 759-4950
www.geotechengineers.net

500 South 17th Street
Paducah, Kentucky 42003
Phone: (270) 443-1995
Fax: (270) 443-1904

403 North Court Street
Marion, IL 62959
PHONE: (618) 997-9190

COPYRIGHT © 2008 - GEOTECH ENGINEERING & TESTING, INC.

STATE OF ILLINOIS
DEPARTMENT OF TRANSPORTATION
DIVISION OF HIGHWAYS

SUBMITTED Jan 9, 20 09
Max C. Lamm
DEPUTY DIRECTOR OF HIGHWAYS, REGION ENGINEER

March 27, 20 09
Charles J. Ingersoll
ENGINEER OF DESIGN AND ENVIRONMENT

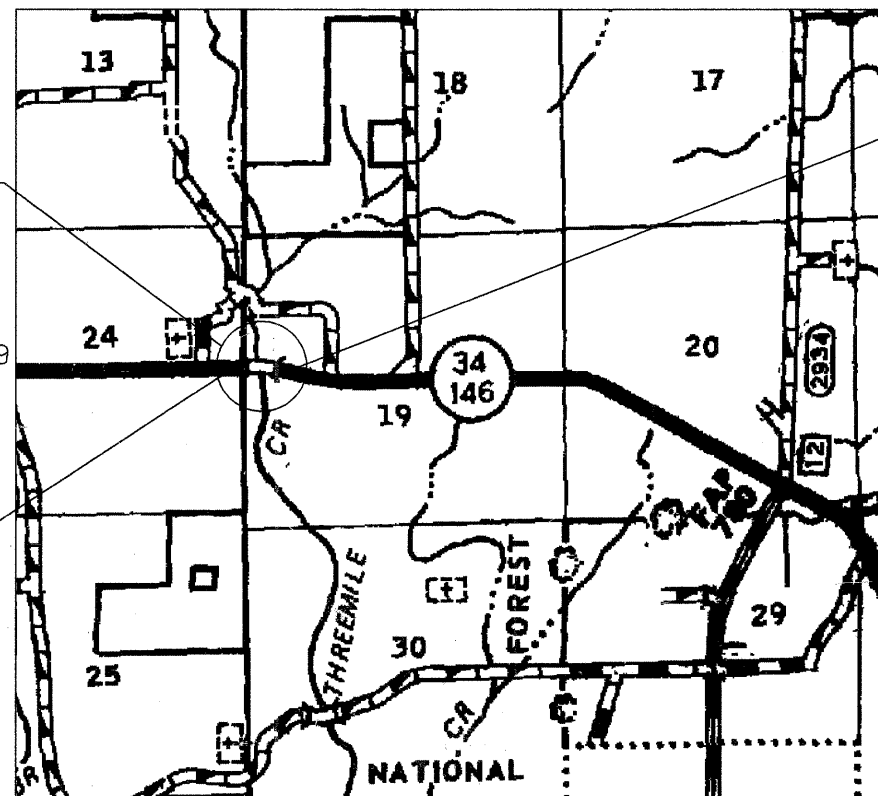
March 27, 20 09
Christine M. Reed
DIRECTOR OF HIGHWAYS, CHIEF ENGINEER

TOWNSHIPS:
STONE CHURCH

PROPOSED BRIDGE ON IL 34/146
OVER THREE MILE CREEK
STRUCTURE NUMBER 035-0015
STRUCTURE C STA. 76+80
SINGLE SPAN-STEEL BEAM BRIDGE
68'-0" BK TO BK ABUTS; 10° SKEW
EXIST. STRUCTURE NUMBER 035-0009

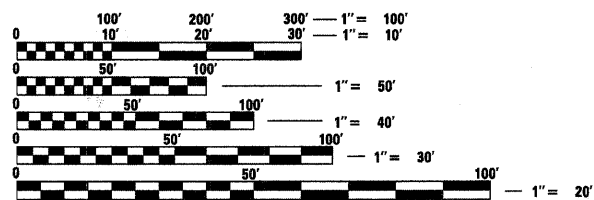
(035-0015) BEGINS
STA. 76+46.03

(035-0015) ENDS
STA. 77+14.03



FAP RTE 885 (IL 34/146):
GROSS LENGTH OF PROJECT : 1320 FT. = .25 MILES

SN 035-0015
ROADWAY LENGTH = 1136 FT
BRIDGE LENGTH = 68 FT
NET LENGTH OF PROJECT = 1204 FT



FULL SIZE PLANS HAVE BEEN PREPARED USING STANDARD
ENGINEERING SCALES. REDUCED SIZED PLANS WILL NOT
CONFORM TO STANDARD SCALES. IN MAKING MEASUREMENTS
ON REDUCED PLANS, THE ABOVE SCALES MAY BE USED.

J.U.L.I.E.
JOINT UTILITY LOCATION INFORMATION FOR EXCAVATION
1-800-892-0123
OR 811



CONTRACT NO. 98949

**PRINTED BY THE AUTHORITY
OF THE STATE OF ILLINOIS**

PROJECT ENGINEER: DAVID PICHE (618) 549-2171