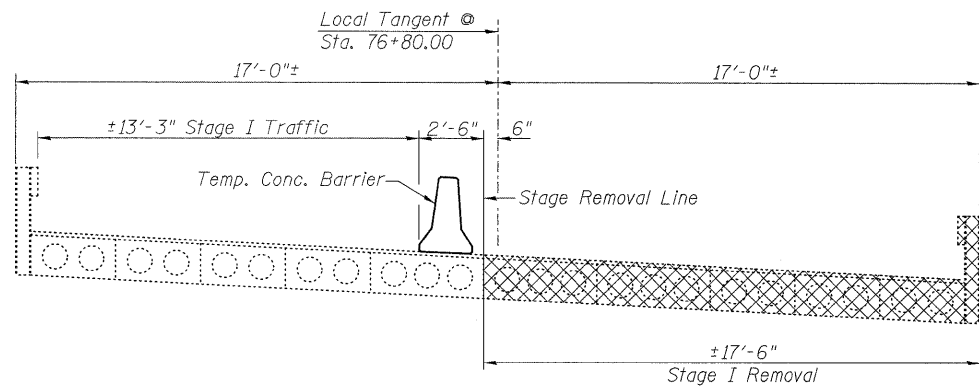
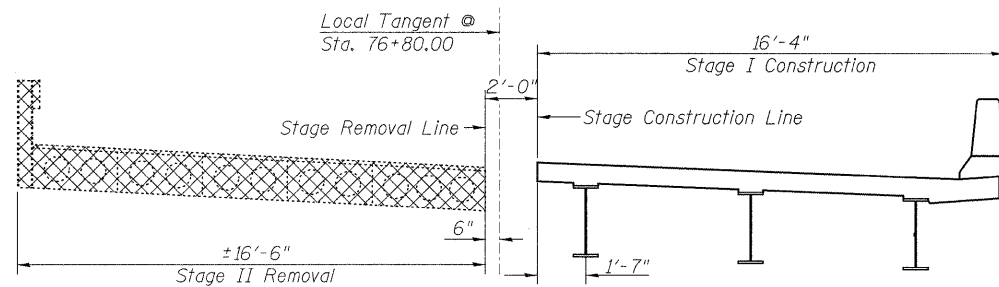


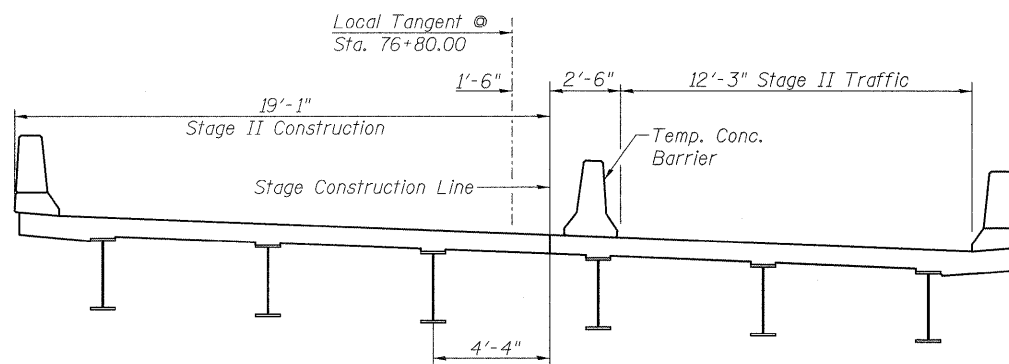
STATE OF ILLINOIS
DEPARTMENT OF TRANSPORTATION



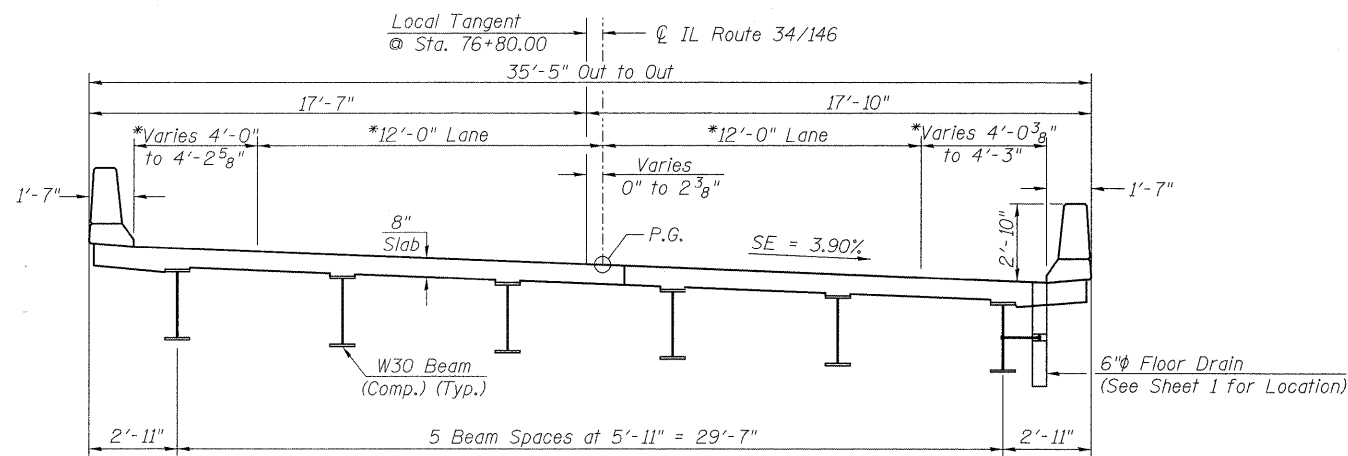
STAGE I REMOVAL & TRAFFIC



STAGE I CONSTRUCTION & STAGE II REMOVAL



STAGE II CONSTRUCTION & TRAFFIC

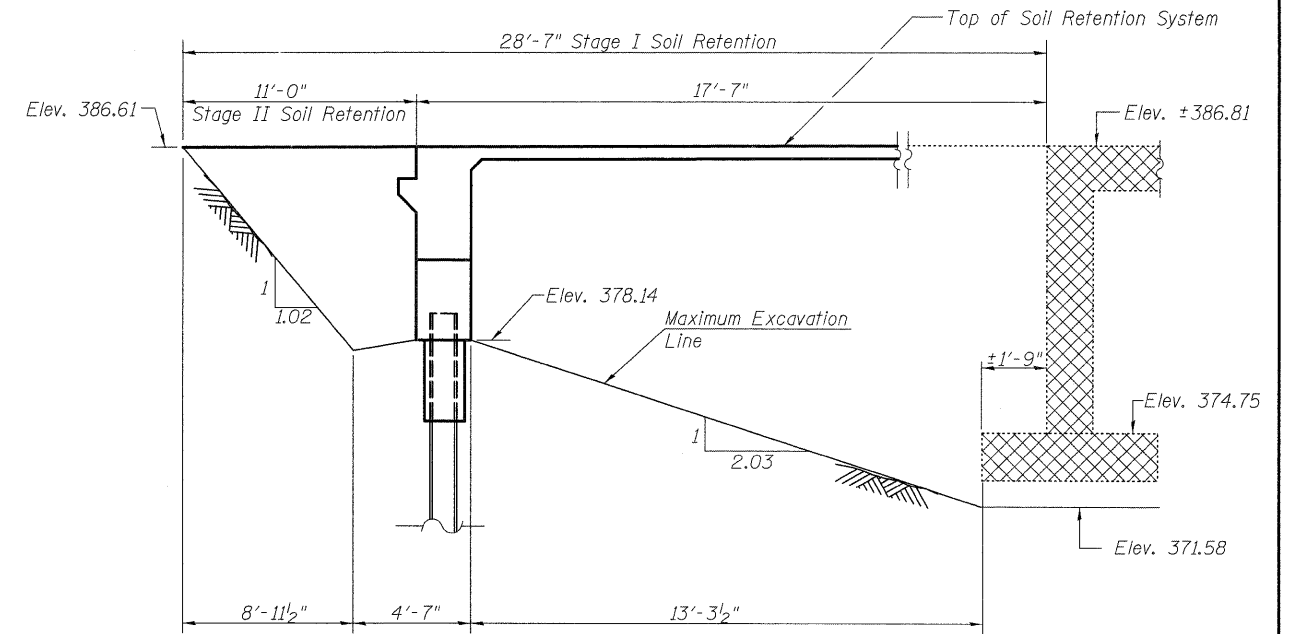


PROPOSED CROSS SECTION

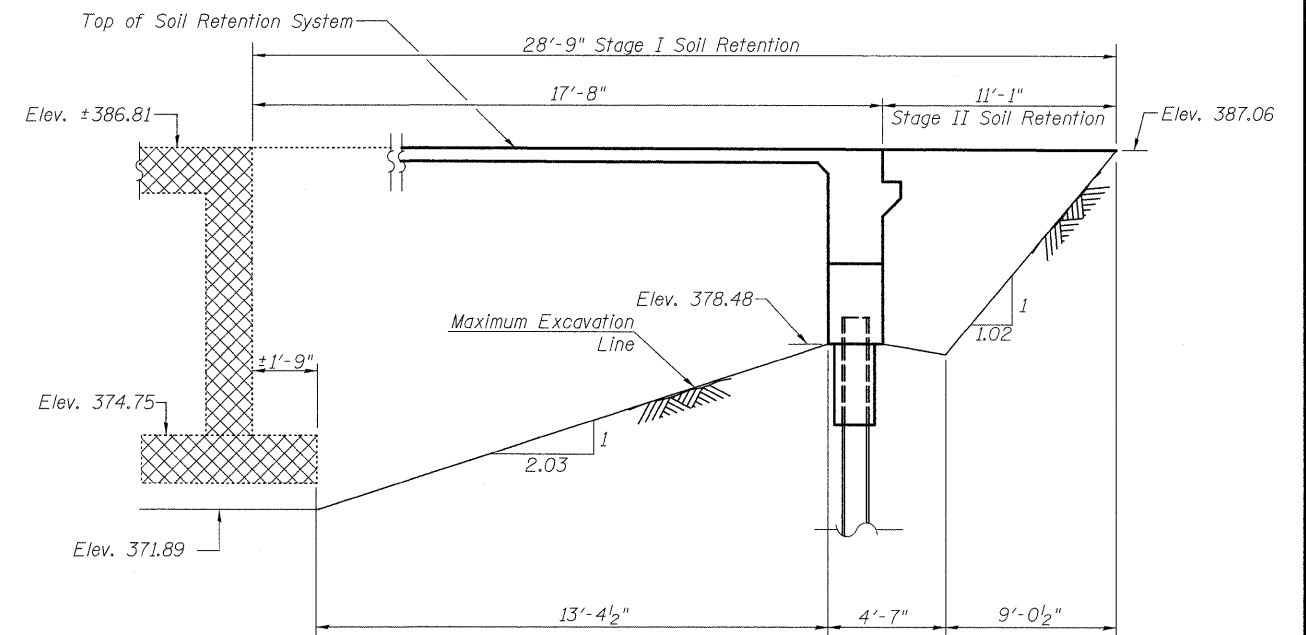
*Radial Dimensions

Notes:

1. Cross Hatched areas indicate removal of existing structure.
2. Location of Stage Removal & Construction lines is also applicable to abutments.
3. See roadway plans for quantity of Temporary Concrete Barrier.
4. See sheet 12 of 18 for details of Temporary Concrete Barrier.
5. All tranverse dimensions are measured perpendicular to Local Tangent at Sta. 76+80.00, unless otherwise shown.
6. All cross sections are Looking East.
7. Removal of existing bridge railing and bituminous wearing surface is included with Removal of Existing Structure.
8. A cantilevered sheet piling design does not appear feasible and additional members or other retention systems may be necessary. The Contractor shall submit a temporary soil retention system design including plan details and calculations for review and acceptance by the Engineer.



TEMPORARY SOIL RETENTION SYSTEM AT WEST ABUT.



TEMPORARY SOIL RETENTION SYSTEM AT EAST ABUT.

STAGE CONSTRUCTION
DETAILS
IL 34/146 OVER
THREE MILE CREEK
STATION 76+80.00

<p>LIN ENGINEERING, LTD. Consulting Engineers Chatham, Illinois</p>	<p>SHEET NO. 3 18 SHEETS</p>	F.A.P. RTE.	SECTION	COUNTY	TOTAL SHEETS	SHEET NO.
		885	5B-1	Hardin	48	16
		S.N. 035-0015		CONTRACT NO. 98949		
		FED. ROAD DIST. NO. - ILLINOIS		FED. AID PROJECT		