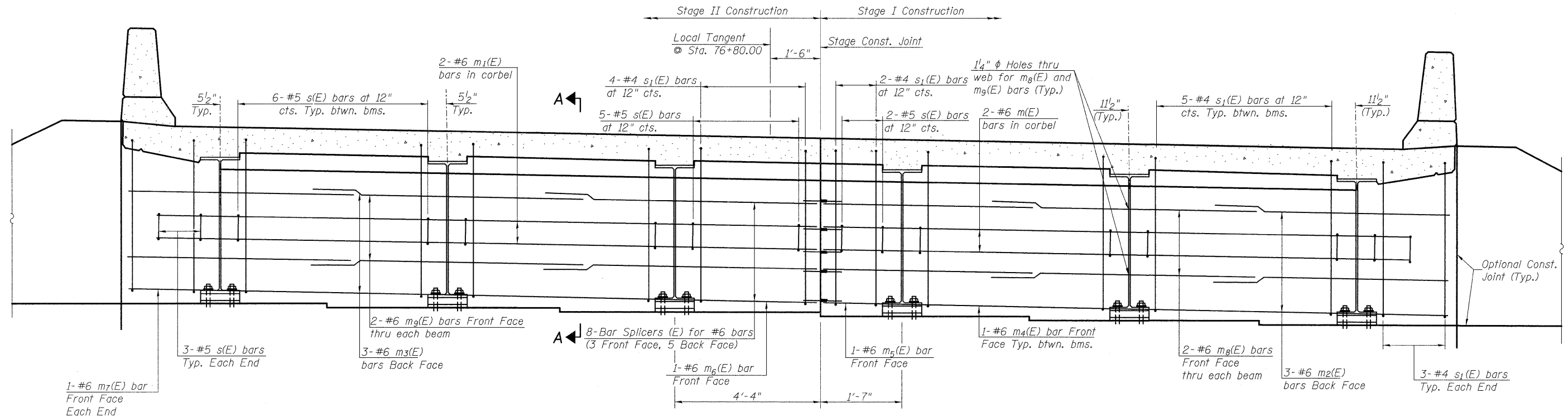


STATE OF ILLINOIS
DEPARTMENT OF TRANSPORTATION



DIAPHRAGM ELEVATION AT EAST ABUTMENT

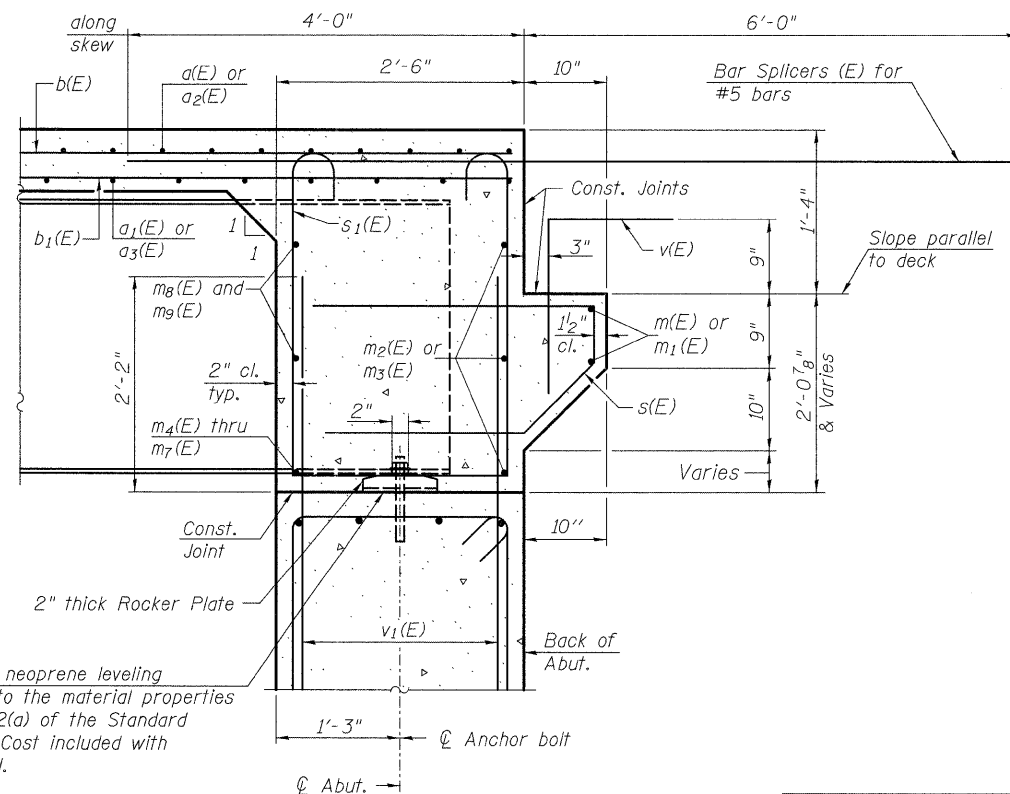
(Looking East)
(All horizontal dimensions at right angles to Local Tangent)
(West Abutment mirrored about Local Tangent)

Notes:

Reinforcement bars in diaphragm are billed with superstructure on sheet 7 of 18.
Concrete in diaphragm is included with Concrete Superstructure on sheet 7 of 18.
For details of bars $s(E)$ & $s_1(E)$ see sheet 7 of 18.
The $s(E)$ and $s_1(E)$ bars shall be placed parallel to the beams. Spacing for these bars shall be at right angles to the beams.
For location of holes thru web, see sheet 9 of 18.

MIN. BAR LAP

#6 bar = 2'-7"



SECTION A-A

(Dimensions at right angles to abutment, except as shown.)

CONCRETE END DIAPHRAGMS
IL 34/146 OVER
THREE MILE CREEK
STATION 76+80.00

<p>LIN ENGINEERING, LTD. Consulting Engineers Chatham, Illinois</p>	SHEET NO. 8	F.A.P. RTE. 885	SECTION 5B-1	COUNTY Hardin	TOTAL SHEETS 48	SHEET NO. 21
	18 SHEETS	S.N. 035-0015		CONTRACT NO. 98949		
<small>Designed By: ESH Date: 9/2008</small>	<small>Checked By: MTH File: 035-0015.dgn</small>	<small>Drawn By: ESH</small>	FED. ROAD DIST. NO. - ILLINOIS FED. AID PROJECT			