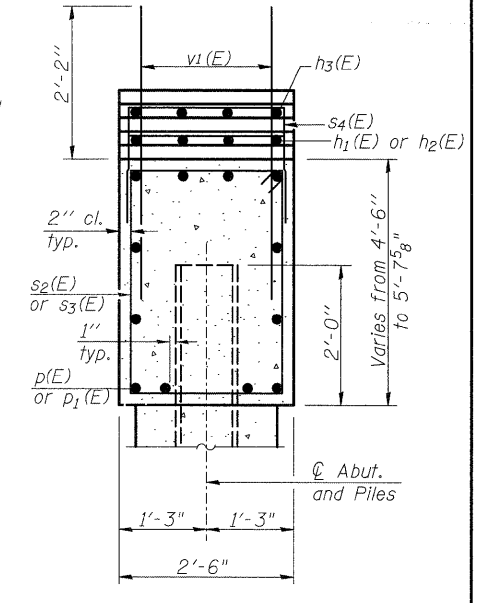
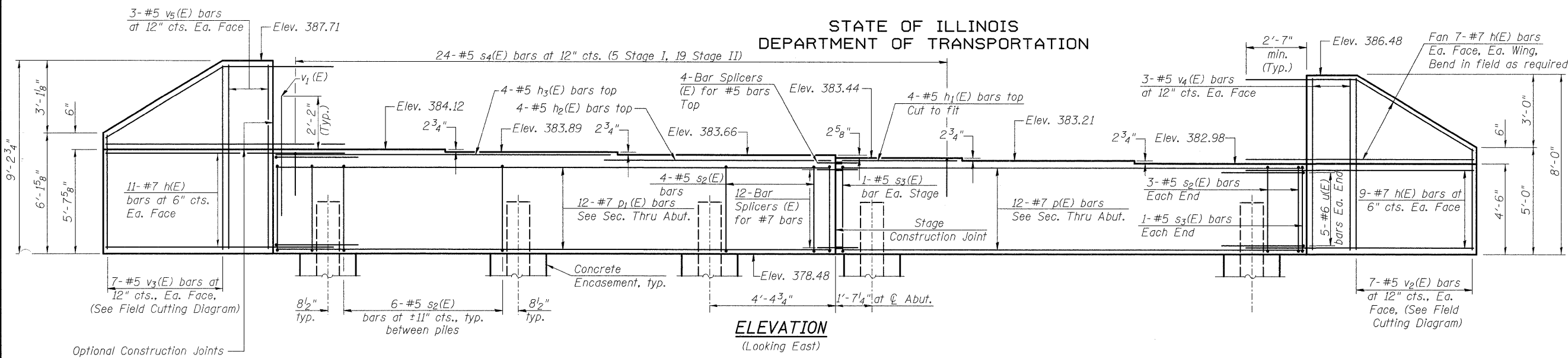


STATE OF ILLINOIS
DEPARTMENT OF TRANSPORTATION



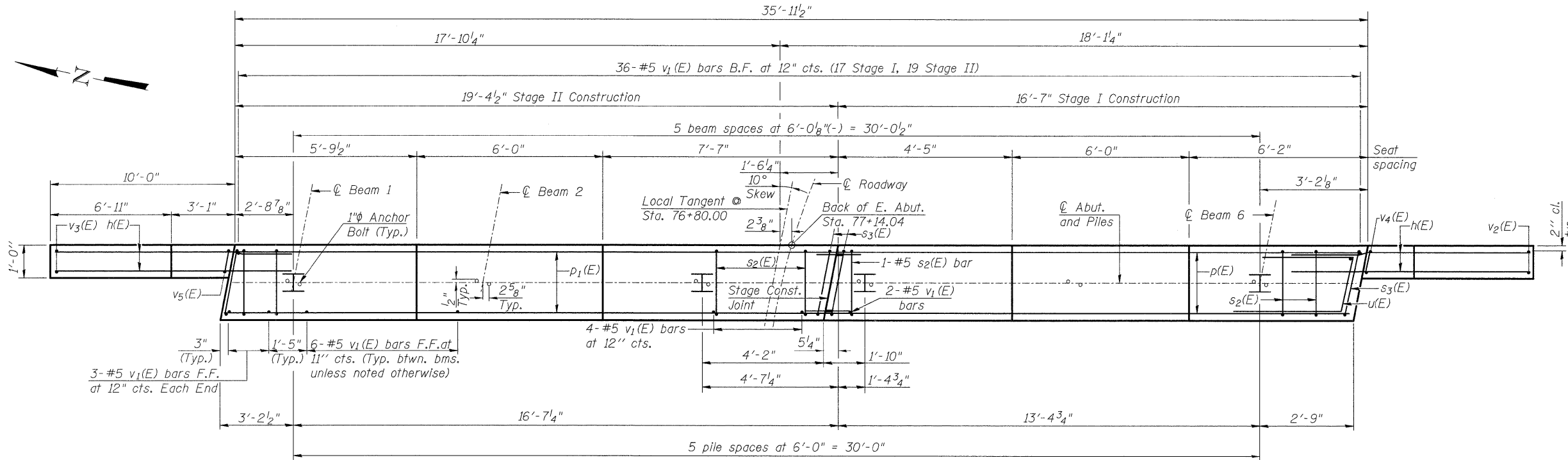
SEC. THRU ABUT.
(Dimensions at Rt. L's)

BILL OF MATERIAL
(East Abutment)

Bar	No.	Size	Length	Shape
h(E)	68	#7	12'-6"	—
h1(E)	4	#5	4'-6"	—
h2(E)	4	#5	8'-0"	—
h3(E)	4	#5	11'-5"	—
p(E)	12	#7	16'-3"	—
p1(E)	12	#7	19'-1"	—
s2(E)	35	#5	13'-7"	□
s3(E)	4	#5	13'-9"	□
s4(E)	24	#5	6'-6"	□
u(E)	10	#6	7'-11"	∟
v1(E)	72	#5	4'-4"	—
v2(E)	7	#5	12'-4"	—
v3(E)	7	#5	14'-9"	—
v4(E)	6	#5	7'-8"	—
v5(E)	6	#5	8'-11"	—
Structure Excavation		Cu. Yd.	135	
Concrete Structures		Cu. Yd.	22.5	
Reinforcement Bars, Epoxy Coated		Pound	4170	
Furnishing Steel Piles HP12x63		Foot	192	
Driving Piles		Foot	192	
Pile Shoes		Each	6	
Concrete Encasement		Cu. Yd.	2.1	
Anchor Bolts, 1"		Each	12	

For details of Bar Splicers, see sheet 13 of 18.
For details of Piles and Concrete Encasement, see sheet 14 of 18.
For details of Integral Abutment Bearing, see sheet 9 of 18.
For drainage details, see Section Thru Integral Abutment on sheet 2 of 18.

EAST ABUTMENT
IL 34/146 OVER
THREE MILE CREEK
STATION 76+80.00

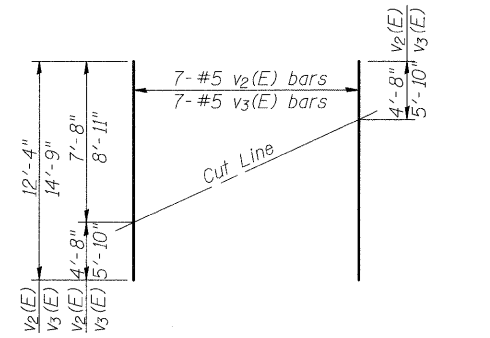


PLAN

Notes:
Pour steps monolithically with cap.
Space reinforcement in cap to miss Anchor Bolts.

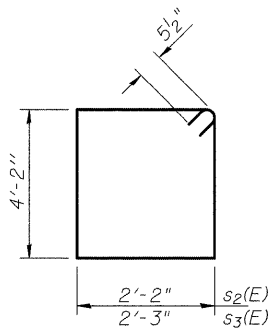
PILE DATA

Type: Steel HP12x63 with Pile Shoes
Nominal Required Bearing: 497 kips
Factored Resistance Available: 249 kips
Est. Length: 32'
No. Production Piles: 6

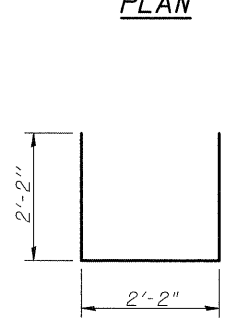


FIELD CUTTING DIAGRAM

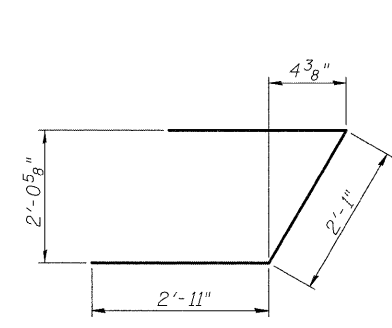
Order v2(E) and v3(E) full length. Cut as shown and use remainder of bars in opposite face.



BARS s2(E) & s3(E)



BARS s4(E)



BAR u(E)

<p>LIN ENGINEERING, LTD. Consulting Engineers Chatham, Illinois</p>	SHEET NO. 11	F.A.P. RTE. 885	SECTION 5B-1	COUNTY Hardin	TOTAL SHEETS 48	SHEET NO. 24
	18 SHEETS	S.N. 035-0015		CONTRACT NO. 98949		
	DESIGNED BY: ESH CHECKED BY: MTH DATE: 8/2008		DRAWN BY: ESH FILE: 035-0015.dgn		FED. ROAD DIST. NO. ILLINOIS FED. AID PROJECT	