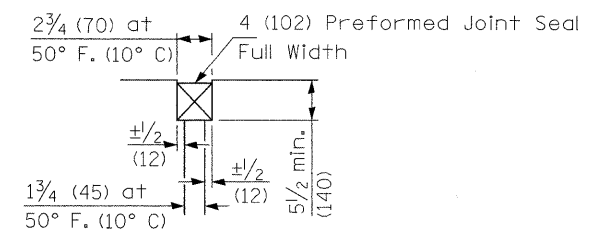
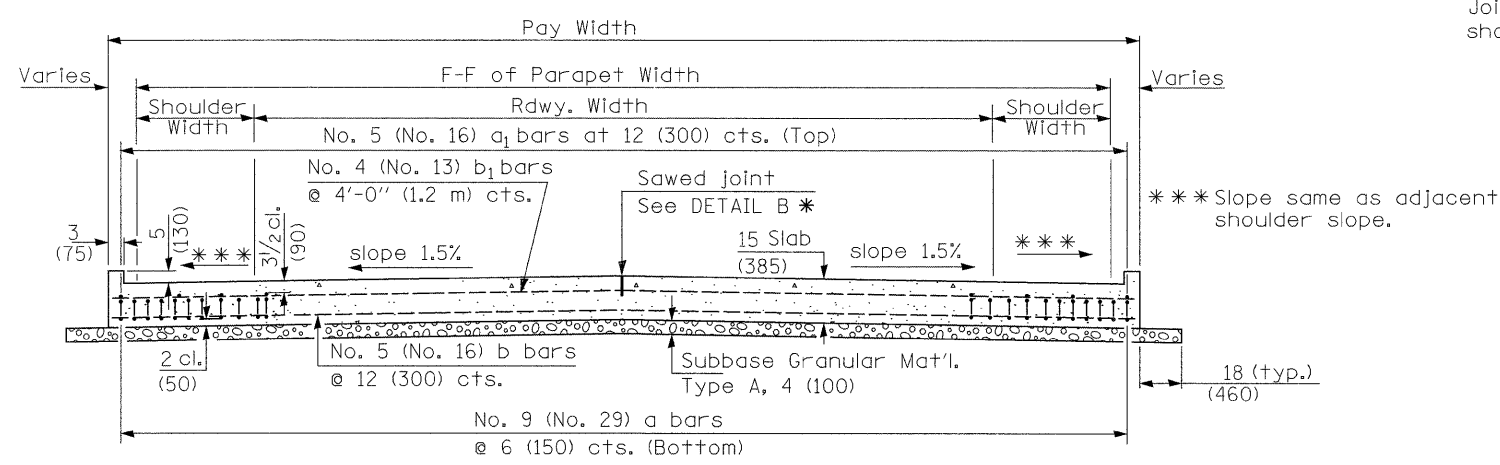


PREFORMED JOINT SEAL



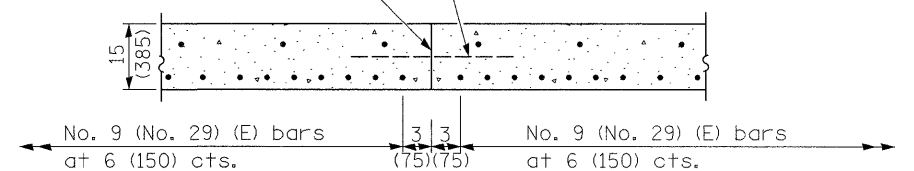
DETAIL A

SECTION C-C
 Ⓣ Stagger No. 9 (No. 29) a bars as shown on plan - full width



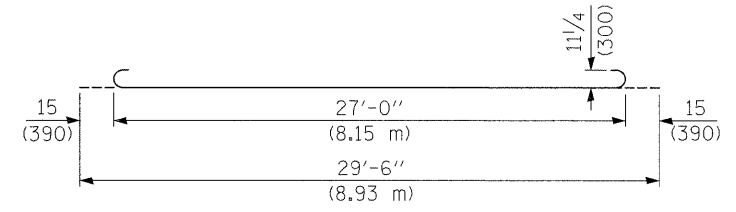
SECTION D-D
 (See Plan for Dimensions not shown)

Longitudinal Construction Joint in accordance with details shown on Standard 420001.

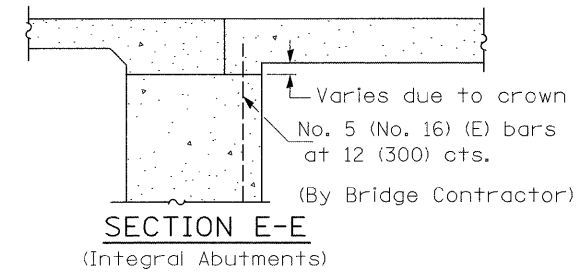


OPTIONAL LONGITUDINAL CONSTRUCTION JOINT

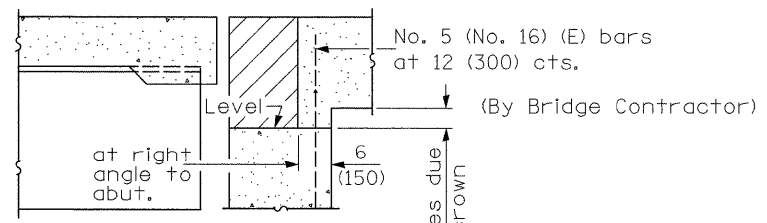
As approved by the Engineer, the Contractor may elect to reduce the widths of pour by use of the Optional Longitudinal Construction Joint shown. Joints shall be located at the edge of a traffic lane.



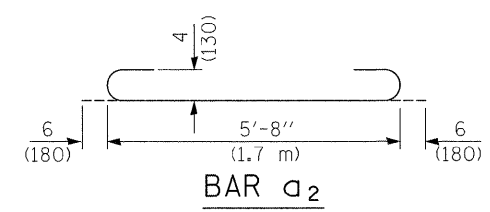
BAR a



SECTION E-E
 (Integral Abutments)



SECTION E-E
 (Jointed Abutments)



BAR a2

DESIGN STRESSES
 fy = 60,000 p.s.i. (400 MPa)
 f'c = 3,500 p.s.i. (24 MPa)
 n = 8.5

FILE NAME =	USER NAME = #USER#	DESIGNED -	REVISED -	STATE OF ILLINOIS DEPARTMENT OF TRANSPORTATION	F.A. RTE.	SECTION	COUNTY	TOTAL SHEETS	SHEET NO.
#FILEL#		DRAWN -	REVISED -		885	5B-1	HARDIN	48	36
	PLOT SCALE = #SCALE#	CHECKED -	REVISED -		CONTRACT NO. 98949				
	PLOT DATE = #DATE#	DATE -	REVISED -		SCALE:	SHEET NO.	OF SHEETS	STA.	TO STA.