

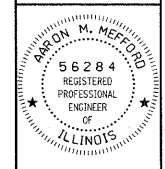
F.A.S.	SECTION	COUNTY	TOTAL SHEETS	SHEET NO.
880	06-00097-00-FP	HAMILTON	25	1
FED. ROAD DIST. NO. 9 (ILLINOIS)		BELLE PRAIRIE ROAD		
PROJECT # SR-880(106)		CONTRACT # 99339		
LEC JOB # H081L003HM				

323 W. 3RD ST.
P.O. BOX 160
MT. CARMEL, IL
62863
PHONE: (618)-262-8651
FAX: (618)-263-3327

405 W. STATE ST.
SUITE 1
PRINCETON, IN
47670
PHONE: (812)-386-7611
FAX: (812)-385-2812



PROFESSIONAL DESIGN FIRM
LAND SURVEY &
PROFESSIONAL ENGINEERING CORPORATION
181-00887
(62-032435)(35-002769)



AARON M. MEFFORD
NAME
Signature
SIGNATURE
DATE
12-17-08
11-30-09
EXPIRES

F.A.S. 880 (CH 8)
BELLE PRAIRIE ROAD
SECTION 06-00097-00-FP
HAMILTON COUNTY, ILLINOIS

SHEET TITLE:
GEN NOTES
MISC DETAILS

SCALE: VARS
BY: AMM
DATE: 12/2008
REV:

1 OF 25
SHEETS

SHEET NO.
1

STATE OF ILLINOIS

DEPARTMENT OF TRANSPORTATION

DIVISION OF HIGHWAYS

PLANS FOR PROPOSED FEDERAL AID S.T.R. & T.A.R.P. PROJECT

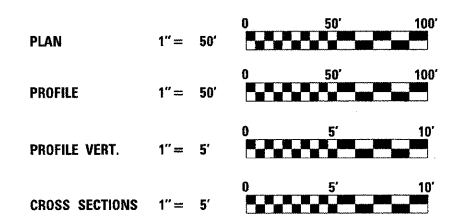
F.A.S. 880 (CH 8) SECTION 06-00097-00-FP HAMILTON COUNTY
PROJECT SR-880(106) JOB NO. C-99-507-07

INDEX OF SHEETS

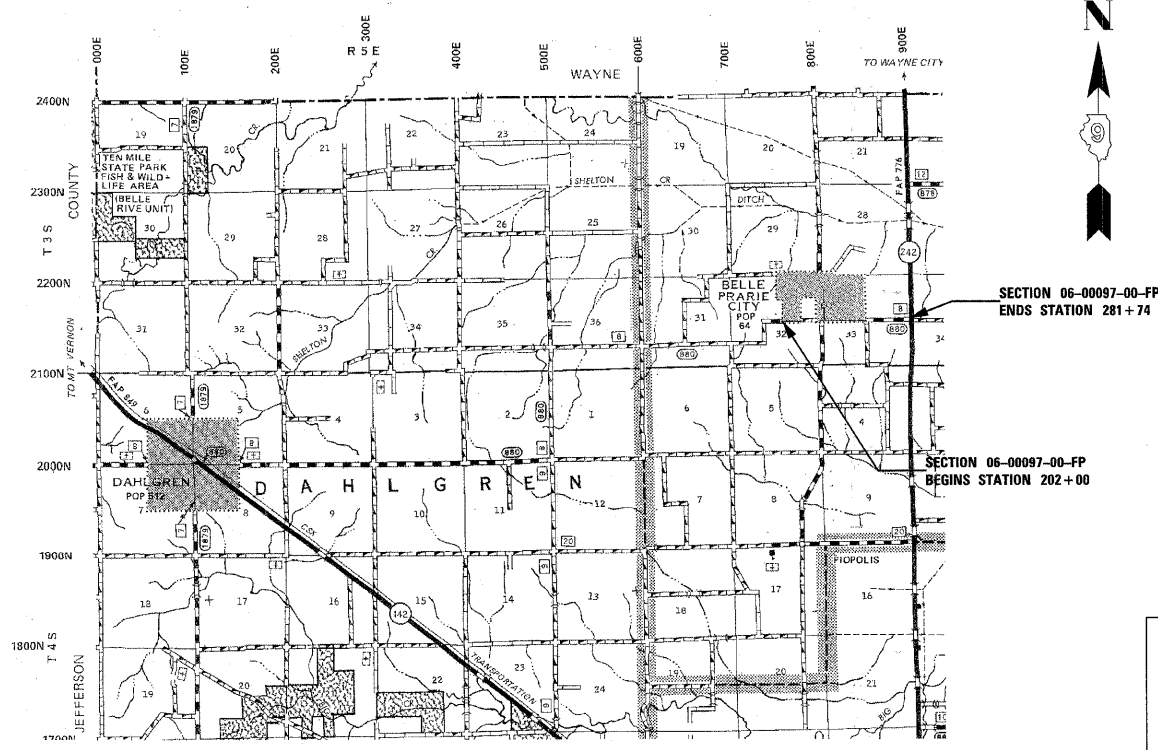
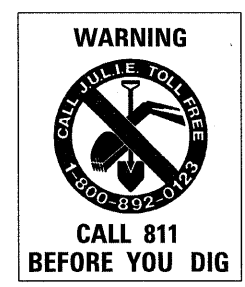
SHEET NO.	DESCRIPTION
1	TITLE SHEET
2-3	SUMMARY OF QUANTITIES, TYPICAL SECTIONS, GENERAL NOTES & MISC. DETAILS
4-5	EROSION CONTROL PLAN
6-11	PLAN & PROFILE SHEETS
12-23	ROADWAY CROSS SECTIONS
24	PIPE CULVERT CROSS-SECTIONS- VARIOUS LOCATIONS
25	BOX CULVERT EXTENSION DETAILS- STA 281+00

**THE FOLLOWING STANDARDS
ARE A PART OF THESE PLANS AND
ARE INCLUDED AFTER SHEET NO. 25**

000001-05	STANDARD SYMBOLS, ABBREVIATIONS & PATTERNS
280001-04	TEMPORARY EROSION CONTROL SYSTEMS
406201-01	MAILBOX TURNOUT
542301-02	PRECAST REINFORCED CONCRETE FLARED END SECTION
666001-01	RIGHT OF WAY MARKERS
701306-02	LANE CLOSURE, 2L, 2W, SLOW MOVING OPERATIONS - DAY ONLY FOR SPEEDS ≥ 45 MPH
701311-03	LANE CLOSURE, 2L, 2W, MOVING OPERATIONS-DAY ONLY
701901-01	TRAFFIC CONTROL DEVICES
720006-02	SIGN PANEL ERECTION DETAILS
720011-01	METAL POSTS FOR SIGNS, MARKERS & DELINEATORS
729001-01	APPLICATIONS OF TYPES A & B METAL POSTS (FOR SIGNS & MARKERS)
780001-02	TYPICAL PAVEMENT MARKINGS
B.L.R. 21-8	TYPICAL APPLICATION OF TRAFFIC CONTROL DEVICES FOR CONSTRUCTION ON RURAL LOCAL HIGHWAYS
B.L.R. 22-6	TYPICAL APPLICATION OF TRAFFIC CONTROL DEVICES FOR CONSTRUCTION ON RURAL LOCAL HIGHWAYS (TWO-LANE TWO-WAY RURAL TRAFFIC) (ROAD CLOSED TO THRU TRAFFIC)



DESIGN DESIGNATION:
DESIGN SPEED: 40 MPH
HIGHWAY CLASS - RURAL MAJOR COLLECTOR
CURRENT A.D.T. = 500
CONTRACT NO. 99339



LAYOUT
APPROXIMATE SCALE 1 INCH = 1 MILE

GROSS LENGTH	7,974 FT	1.510 MILES
OMISSION	0 FT	0.000 MILES
NET LENGTH	7,974 FT	1.510 MILES

STATE OF ILLINOIS
DEPARTMENT OF TRANSPORTATION

APPROVED December 16, 2008
Kenneth D. ...
COUNTY ENGINEER

PASSED DECEMBER 29, 2008
Kathleen ...
ENGINEER OF LOCAL ROADS AND STREETS

RELEASING FOR BID
BASED ON LIMITED
REVIEW DECEMBER 31, 2008
Mary C. Lamie
MARY C. LAMIE, P.E.
DEPUTY DIRECTOR OF HIGHWAY
REGION FIVE ENGINEER

