

F.A.S.	SECTION	COUNTY	TOTAL SHEETS	SHEET NO.
880	06-00097-00-FP	HAMILTON	25	5
FED. ROAD DIST. NO. 9 ILLINOIS		BELLE PRAIRIE ROAD		
PROJECT # SR-880(106)		CONTRACT # 99339		
LEC JOB # H081003HM				

323 W. 3RD ST.
P.O. BOX 160
MT. CARMEL, IL
62863
PHONE: (618)-262-8651
FAX: (618)-263-3327

405 W. STATE ST
SUITE 1
PRINCETON, IN
47670
PHONE: (812)-386-7611
FAX: (812)-385-2812



PROFESSIONAL DESIGN FIRM
LAND SURVEY & PROFESSIONAL ENGINEERING CORPORATION

184-000887
(62-032435)(35-002769)



AARON M. MEFFORD
NAME
Aaron M. Mefford
SIGNATURE
12-17-08
DATE
11-30-09
EXPIRES

F.A.S. 880 (CH 8)
BELLE PRAIRIE ROAD
SECTION 06-00097-00-FP
HAMILTON COUNTY, ILLINOIS

SHEET TITLE:

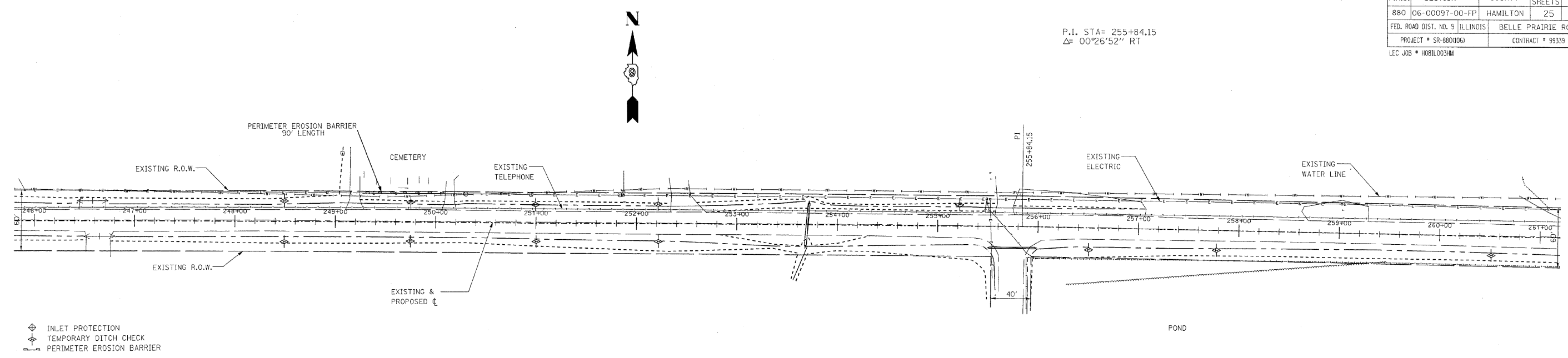
EROSION CONTROL PLAN

SCALE: WRES
BY: AMM
DATE: 11/9/08
REV:

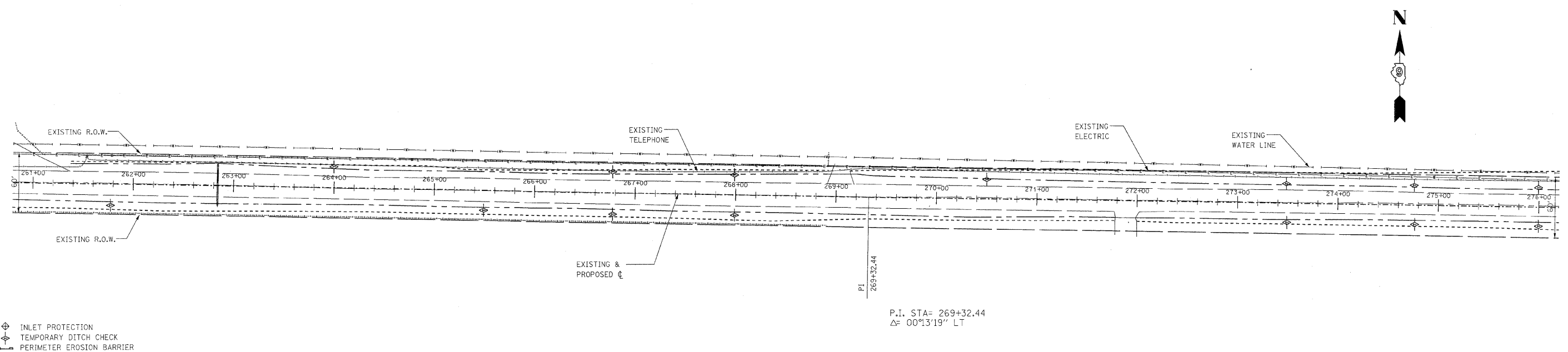
5 OF 25 SHEETS

SHEET NO. 5

P.I. STA= 255+84.15
 $\Delta = 00^{\circ}26'52''$ RT

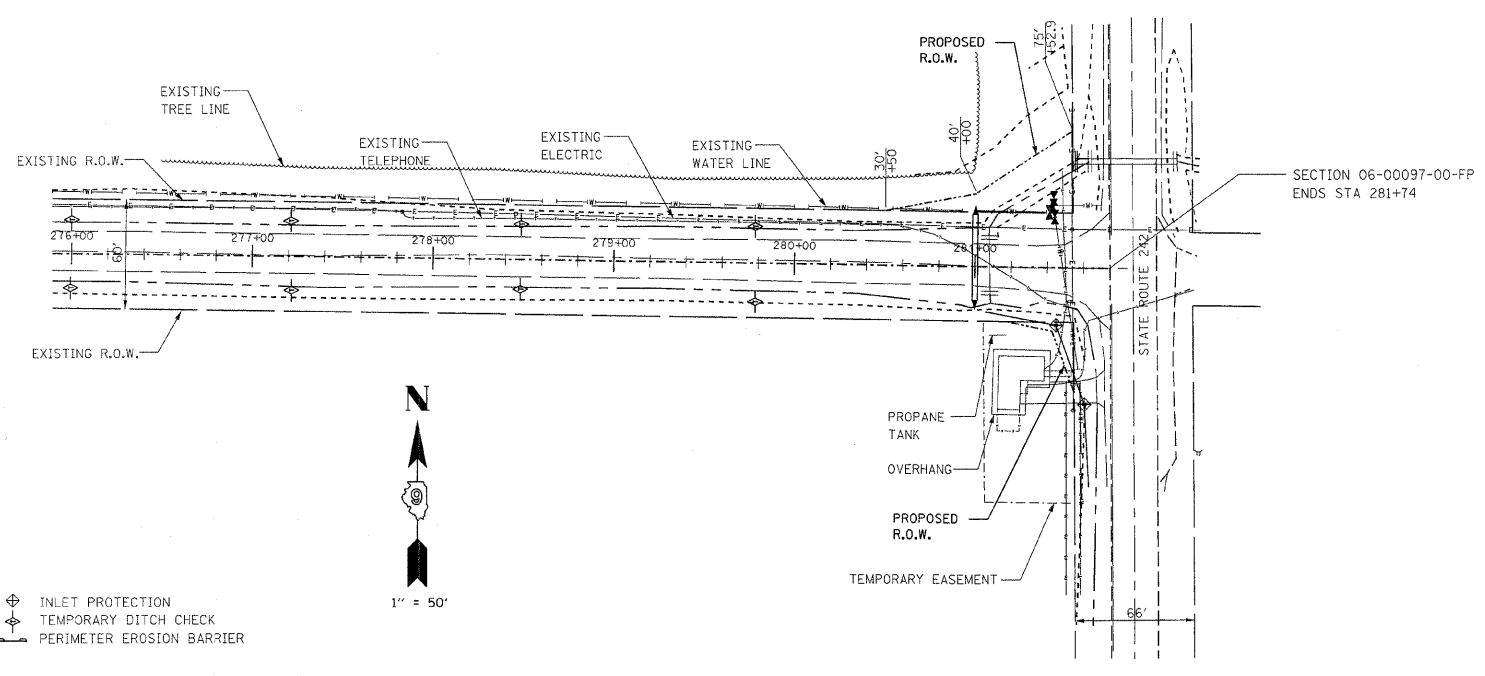


- ⊕ INLET PROTECTION
- ⊕ TEMPORARY DITCH CHECK
- ⊕ PERIMETER EROSION BARRIER



- ⊕ INLET PROTECTION
- ⊕ TEMPORARY DITCH CHECK
- ⊕ PERIMETER EROSION BARRIER

P.I. STA= 269+32.44
 $\Delta = 00^{\circ}13'19''$ LT



- ⊕ INLET PROTECTION
- ⊕ TEMPORARY DITCH CHECK
- ⊕ PERIMETER EROSION BARRIER

1" = 50'

SECTION 06-00097-00-FP
ENDS STA 281+74