



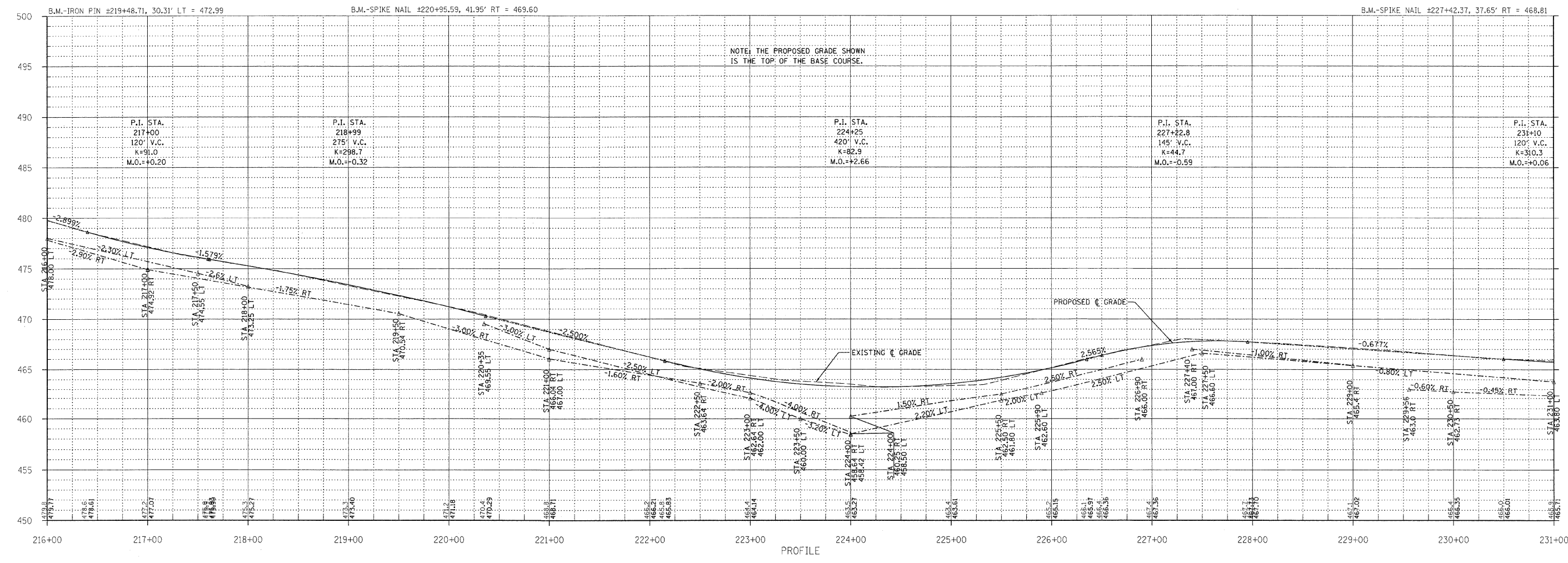
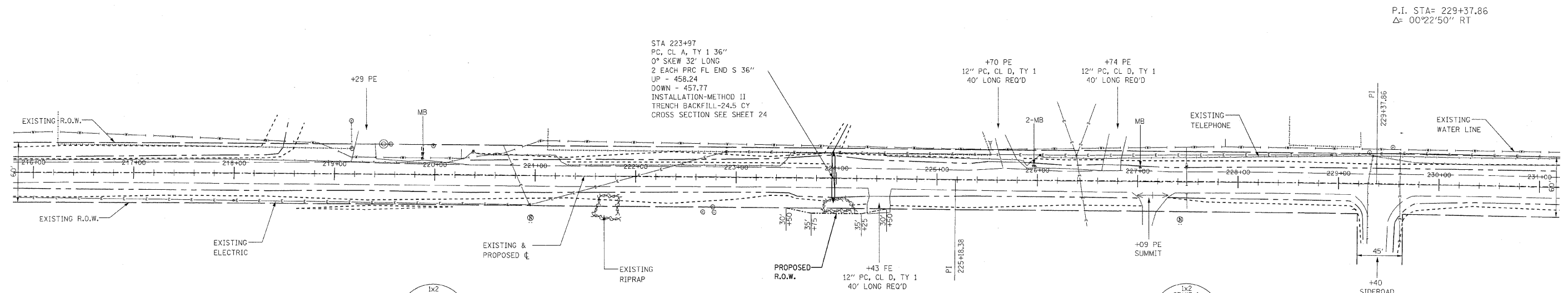
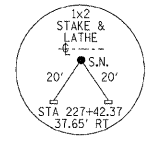
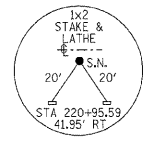
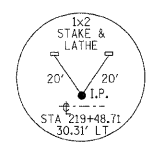
PROFESSIONAL DESIGN FIRM  
LAND SURVEY & PROFESSIONAL ENGINEERING CORPORATION  
184-000887  
(62-032435) (35-002769)



AARON M. MEFFORD  
NAME  
SIGNATURE  
12-17-08  
DATE  
11-30-09  
EXPIRES

F.A.S. 880 (CH 8)  
BELLE PRAIRIE ROAD  
SECTION 06-00097-00-FP  
HAMILTON COUNTY, ILLINOIS

SHEET TITLE:  
PLAN & PROFILE  
SCALE: VARIES  
BY: AMM  
DATE: 11/08  
REV:  
7 OF 25 SHEETS  
SHEET NO. 7



NOTE: THE PROPOSED GRADE SHOWN IS THE TOP OF THE BASE COURSE.

P.I. STA= 229+37.86  
Δ= 00°22'50" RT

P.I. STA= 225+18.38  
Δ= 00°08'44" LT

STA 223+97  
PC, CL A, TY 1 36"  
0° SKEW 32' LONG  
2 EACH PRC FL END S 36"  
UP - 458.24  
DOWN - 457.77  
INSTALLATION-METHOD II  
TRENCH BACKFILL-24.5 CY  
CROSS SECTION SEE SHEET 24

B.M.-IRON PIN ±219+48.71, 30.31' LT = 472.99

B.M.-SPIKE NAIL ±220+95.59, 41.95' RT = 469.60

B.M.-SPIKE NAIL ±227+42.37, 37.65' RT = 468.81

PROFILE