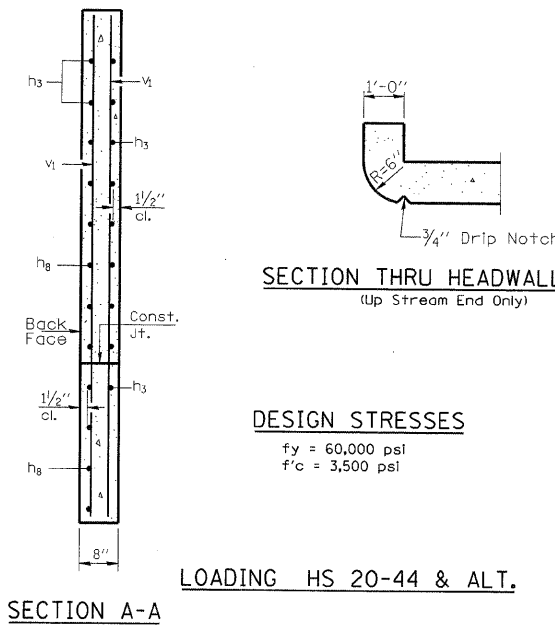
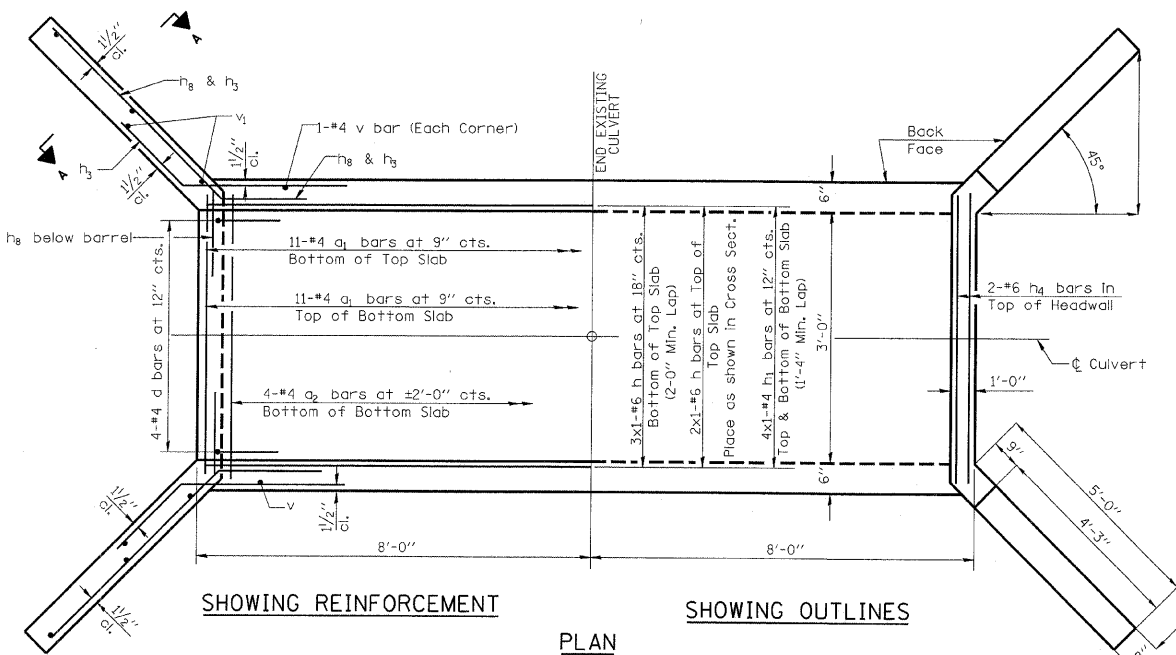
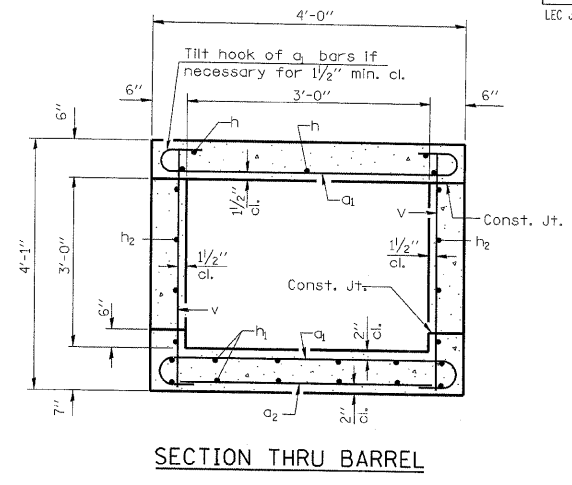
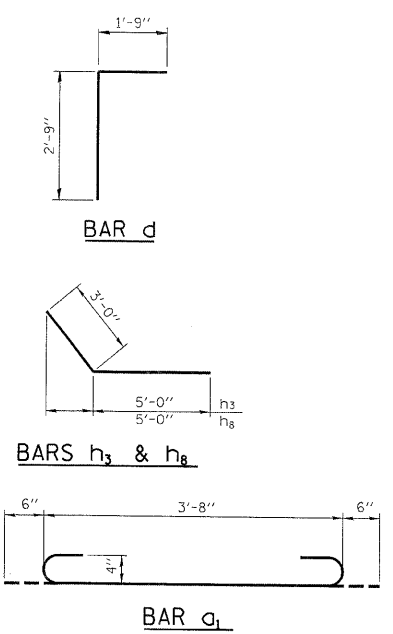
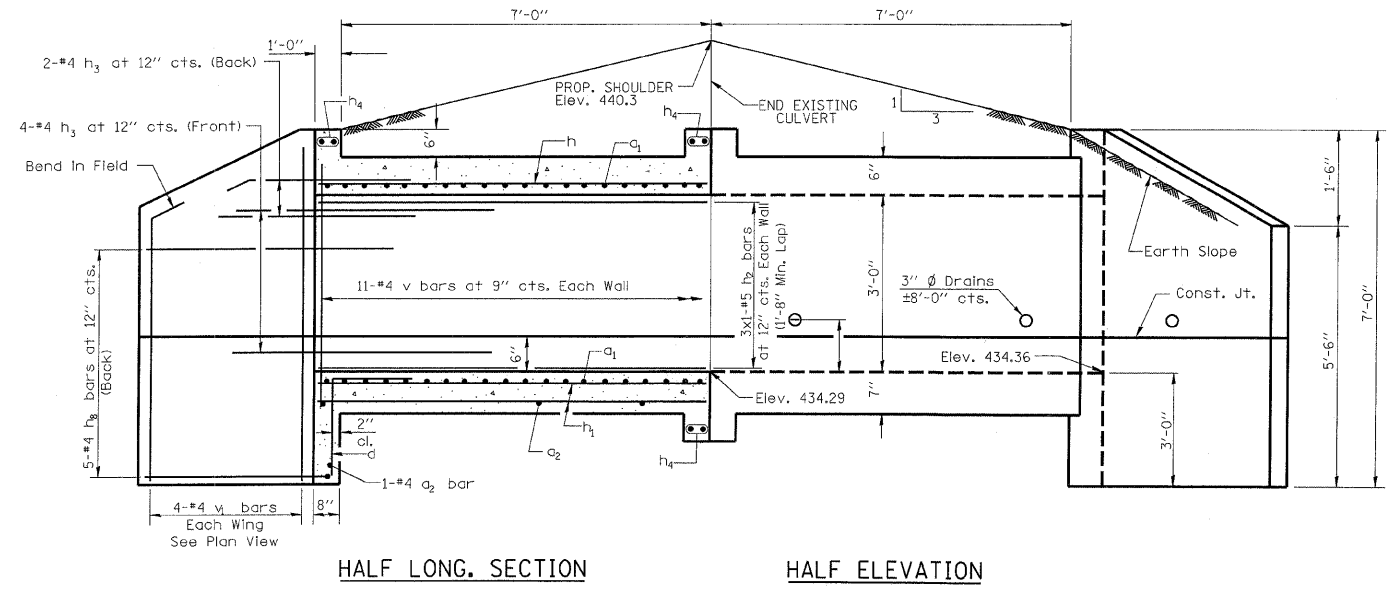


F.A.S.	SECTION	COUNTY	TOTAL SHEETS	SHEET NO.	
B80	06-00097-00-FP	HAMILTON	25	25	323 W. 3RD ST. P.O. BOX 160 MT. CARMEL, IL 62863
FED. ROAD DIST. NO. 9 ILLINOIS		BELLE PRAIRIE ROAD		PHONE: (618)-262-8651 FAX: (618)-263-3327	
PROJECT * SR-880(106)		CONTRACT * 99339		405 W. STATE ST SUITE 1 PRINCETON, IN 47670	
LEC JOB * H0R1.003HM				PHONE: (812)-386-7611 FAX: (812)-386-2812	



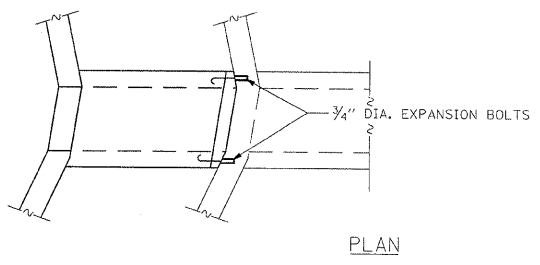
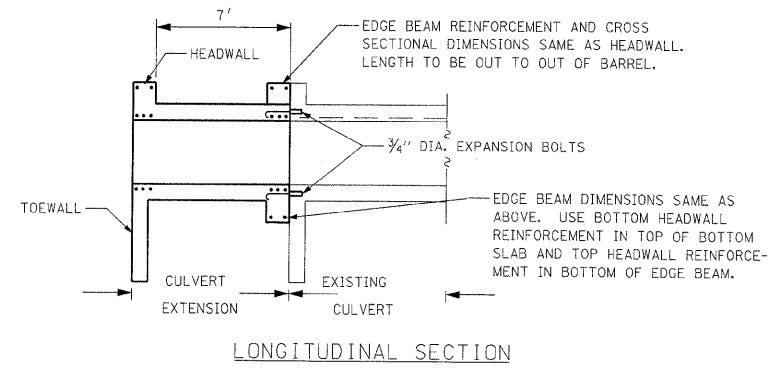
BILL OF MATERIAL

Bar	No.	Size	Length	Shape
a1	22	#4	4'-8"	U
a2	5	#4	3'-3"	—
d	4	#4	4'-6"	—
h	5	#6	7'-9"	—
h1	8	#4	7'-9"	—
h2	6	#5	7'-9"	—
h3	12	#4	8'-0"	—
h4	6	#6	3'-8"	—
h5	10	#4	8'-0"	—
v	24	#4	3'-9"	—
v1	8	#4	6'-6"	—

Concrete Box Culverts	Cu. Yd.	5.1
Reinforcement Bars	Pound	485
Expansion Bolts 3/4"	Each	8

NOTES

A distance of half the length of the wingwall but not less than six feet of the barrel shall be poured monolithically with the wingwalls. Reinforcement Bars shall conform to the requirements of AASHTO M-31, M-42 or M-53, Grade 60. Bars indicated thus 12 x 4-#5 etc. indicates 12 lines of bars with 4 lengths per line. All construction joints shall be bonded.



CULVERT EXTENSION W/ EXT. HEADWALL TO REMAIN



PROFESSIONAL DESIGN FIRM
LAND SURVEY & PROFESSIONAL ENGINEERING CORPORATION
184-000887
(62-032435)(35-002769)

AARON M. MEFFORD
NAME
SIGNATURE
DATE
12-17-06
11-30-09
EXPIRES

F.A.S. 880 (CH 8)
BELLE PRAIRIE ROAD
SECTION 06-00097-00-FP
HAMILTON COUNTY, ILLINOIS

SHEET TITLE:
BOX CULVERT
EXTENSION DETAILS

SCALE: VRIES
BY: AMM
DATE: 1/9/08
REV:

25 OF 25
SHEETS
SHEET NO.
25